


Where Do I Start?

2nd edition

Researching your family
in Australia and New Zealand



 an Unlock the Past
guide book...

Shauna Hicks —

Where Do I Start?

SHAUNA HICKS

**MA GRAD DIP LIB SC DIP FHS
ASAAP FQFHS**

WWW.SHAUNAHICKS.COM.AU

MEMBER



Association of Professional
GENEALOGISTS
Australia & New Zealand Chapter

Introduction

Basic rules

Resources

Publications

Family History
& Genealogical
Societies

Libraries &
Archives

Online
Resources

Good advice

Always work backwards from the known (yourself) to the unknown (forebears)

Never believe everything on a birth, death or marriage certificate

Never completely trust the spelling of surnames, place names - check surname variants when researching – indexing errors – Anglicised names

Always have at least two separate sources of proof for each event

Back up regularly – digital & paper

More good advice

Remember	Everything is only speculation until verified
Scan	Always scan certificates & important documents - leave originals in a safe place
Read	If a document exists, read it. Then read it again!
Join	Join at least one family history group, genealogical society or historical society
Share	Share your information and documentation (copies only) with other researchers

Useful tools

Timelines

Maps

Genealogy
software

Pedigree
charts

Family group
sheets

Document your sources



CITATIONS/REFERENCES
FOR EVERYTHING



WHERE YOU GOT THE
INFORMATION & WHEN



GO BACK AND FIND IT
AGAIN – NOW & IN THE
FUTURE



BE CONSISTENT

Remember

- ❑ Not all records are indexed
- ❑ Not all records are published
- ❑ Not everything is online
- ❑ Local records may only be local
- ❑ Serendipity!

Genealogical Proof Standard



A reasonably exhaustive search for all pertinent information



A complete and accurate citation to the source of each item used



Analysis of the collected information's quality as evidence



Resolution of any conflicting or contradictory evidence



Arrive at a soundly reasoned, coherently written conclusion

Resources

- ❑ Publications & magazines
- ❑ Family history groups
- ❑ BDMs (Births Deaths & Marriages)
- ❑ Newspapers
- ❑ Libraries & Archives
- ❑ Online Resources (websites, digitised records & indexes and databases)

BDMs

- ❑ Certificates are essential – provide clues and evidence (proof)
- ❑ Australian indexes are online free
- ❑ England & Wales
- ❑ Scotland
- ❑ Ireland

Birth, death and marriage records

FamilyHistoryWA – Perth Western Australia

FamilyHistoryWA formerly known as Western Australian Genealogical Society offers free access to a significant number of free online databases. Select Indexes > Online database search > Public. These include:• Perth Technical College Register 1924-1931• Cemetery Inscriptions• Memorials index – public•...

SEPTEMBER 28, 2021

The Ryerson Index

This free index to death notices appearing in Australian newspapers dates from the Sydney Gazette of 1803 up to newspapers published within the last week or so including notices from digital newspapers. There are 4 million+ entries from the past...

SEPTEMBER 25, 2021

mytributes – Australian Death, Funeral, Bereavement and Condolence Notices

Use this free site to find death, funeral, bereavement and condolence notices published in NewsCorp newspapers Australia wide. You can key word search or search by location. There are 41 locations that range from Adelaide to Wynnum. The full text...

Sub categories

- Australia (16)
- Australian Capital Territory (1)
- New South Wales (12)
- Northern Territory (3)
- Queensland (5)
- South Australia (10)
- Tasmania (4)
- Victoria (14)
- Western Australia (5)

Main categories

Aboriginal and Torres Strait Islanders (28)
Apps for genealogy on the move (25)
Archives (19)
Asylum and hospital records (28)
Begin your family history (44)
Birth, death and marriage records (57)
Blogs (29)
Bookshops (16)
Cemeteries (124)
Child welfare (21)
Convicts (64)
Criminal and court records (18)

<https://coraweb.com.au/websites/birth-death-and-marriage-records>

Newspapers

☐ Trove (Australia) <http://trove.nla.gov.au>

☐ Papers Past (New Zealand)
<http://paperspast.natlib.govt.nz/cgi-bin/paperspast>

☐ National Library of Australia E-Resources (free access to British & Irish newspapers at home)
www.nla.gov.au/app/eresources

IN THIS GUIDE

Getting Started

Searching for eResources

Saving and sharing content

Related webinars



Our [eResources portal](#) has been designed with easy access in mind, combining previous functionality with new features that enhance discoverability and make searching easier, more flexible, and more efficient. You can do full-text searches of most of our online content, rather than having to enter and search each database individually. Think of all the material at your fingertips with one easy search!

Read a [blog post](#) explaining how to get the most out of our eResources portal or watch our help video to get started on using the portal.



NOT SURE WHERE TO START?

[ASK A LIBRARIAN](#) →

RELATED BLOG POSTS

- [New eResources portal](#)
- [From the horse's mouth: Primary sources at the NLA](#)
- [Calling all car enthusiasts!](#)
- [eResources for women's studies](#)



Image: <https://nla.gov.au/nla.obj:161206646/view>

www.nla.gov.au/research-guides/eresources-at-the-national-library

Search. Uncover. Australia

Search Trove...

All categories



[Advanced Search](#) ▼



Trove is a collaboration between the National Library of Australia and hundreds of Partner organisations around Australia.

[See our Partners](#)



TROVE SPOTLIGHT



Trove - a bookworm's paradise

[EXPLORE FULL-TEXT, FREE-TO-ACCESS READS NOW ONLINE IN TROVE](#)

CANNING BY-ELECTION, 19 September
HOW TO VOTE TO CUT YOUR POWER BILL



Too hot to handle

[NAVIGATING HISTORICAL NEWS REPORTING IN TROVE](#)

<https://paperspast.natlib.govt.nz>

Papers Past

[Newspapers](#)

[Magazines and Journals](#)

[Letters and Diaries](#)

[Parliamentary Papers](#)

[Books](#)

[Help](#)

[About](#)

Nau mai, rāhiri mai ki Papers Past

Nau mai, piki mai koutou e whai ana i te hīnātore o te mātauranga,
kia āta hīkina ēnei mātauranga kia puta ki te ao mārama,
ā, kia pūmahara ki tōna whakamahinga,
hei tauherenga atu,
ki i nga wā o mua ki te wā a muri ake nei.

Welcome to Papers Past

Welcome to all who are pursuing the spark of knowledge
Carefully uplift this knowledge in to the world of light
And use it wisely
As a link
From the past to the future.

Papers Past delivers digitised full-text New Zealand and Pacific newspapers, magazines and journals, books, and other formats.

Ngā Niupepa Newspapers



Digitised NZ and Pacific newspapers from the 19th and 20th centuries

Ngā Maheni me ngā Hautaka Magazines and Journals



Digitised NZ magazines and journals covering a range of subjects

Ngā Reta me ngā Rātaka Letters and Diaries

Ngauranga 1 Ngauranga 1888
I hoa o. Matarini: I ua ra kot
mau tangata me te tangata i
te mātā o hoa o. I ua ra rongo
mau kotā ki te tika. Matarini
kaia hua pōti tika ngahau ki
te mātā hua o nga. Pātaka o
te tika o hoa o. I ua ra kot
mau kotā ki te tika. Matarini
kaia hua pōti tika ngahau ki
te mātā hua o nga. Pātaka o

Selected letters and diaries, including the papers of Sir Donald McLean, 1820-1877

Ngā Pepa nō te Whare Pāremata Parliamentary Papers

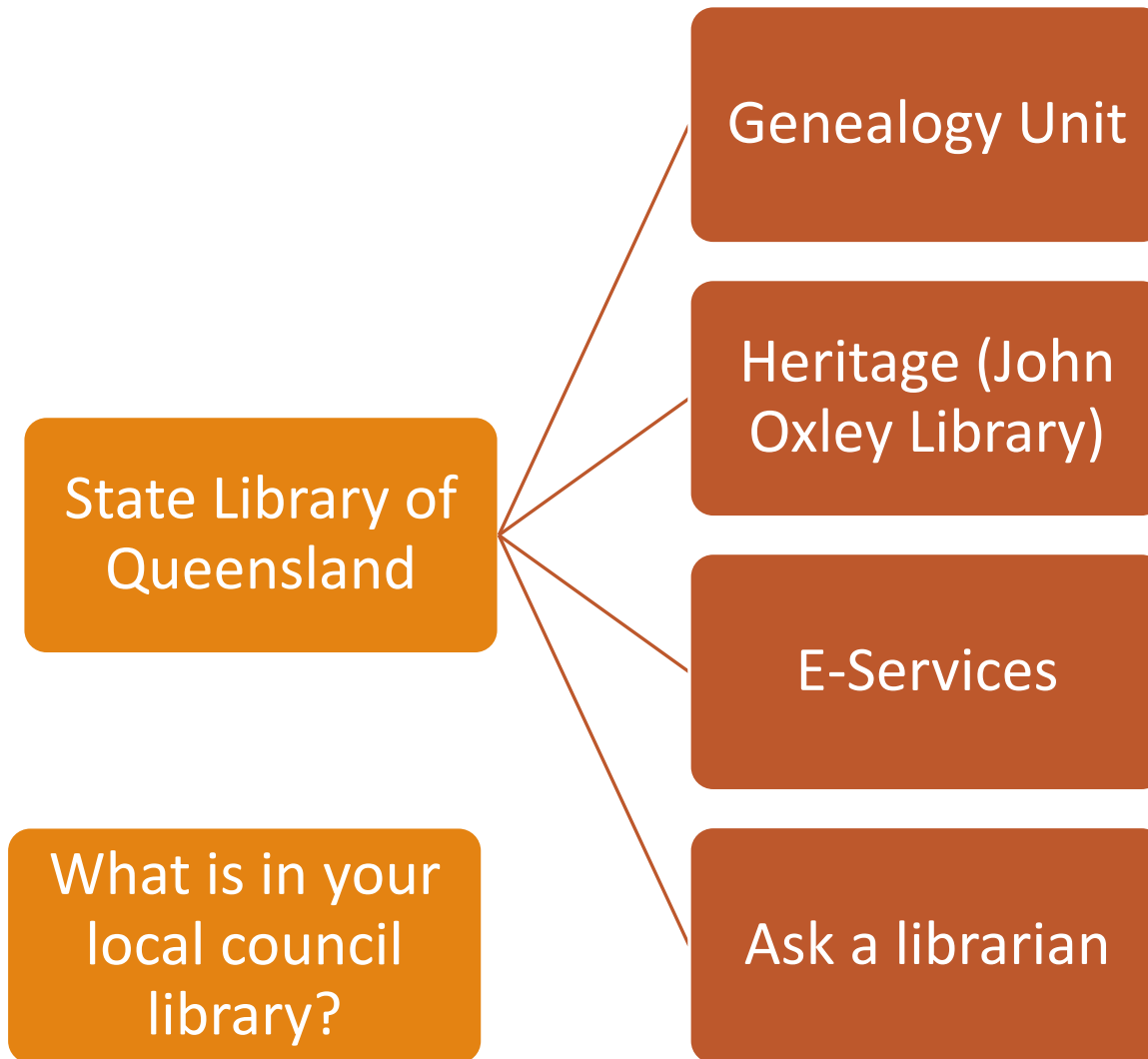


Digitised reports from the Appendices to the Journals of the House of Representatives

Ngā Pukapuka Books



Digitised New Zealand books in English and te reo Māori



Libraries

Resources for family historians

Whether you're a beginner starting to trace your family history or a seasoned researcher looking to dig a little deeper, there are resources to access.



Family history resources and indexes

Search indexes to Queensland material held at State Library. Explore our databases for details from Australia and worldwide.

[Discover more](#)



Family history research guides

Our guides cover various family history topics. They give details on resources, useful websites and research hints.

[Discover more](#)



Useful websites for family historians

Find websites from Australia and overseas that will help you with your family history research.

[Discover more](#)

www.slq.qld.gov.au/research-collections/family-history

Family history research guides

Our research guides are divided into Life events; Travel and migration; Work and occupations; and Directories and social history plus and A-Z. Use our guides to learn more detail about family history resources to help you in your research.

[Life events](#)[Travel and migration](#)[Work and occupations](#)[Directories and social history](#)[A-Z](#)

Work and occupations

Records for occupations can be an important source of information about when (and where) your ancestors worked, how they made their living and what type of life they led. They help provide more detail to your family tree. Find out what resources State Library has on some specific occupations.

Blue Books

The Blue Books (also known as Civil Establishment, Returns of the Colony, or Statistical Returns) were usually published each year. They listed most public servants currently employed by the government. If your ancestors worked for the government you may be able to trace their careers. Learn about the Blue Books and discover what information they hold. See what records are held at State Library.



Blue Books [PDF 38 kb]

PDF · 37 KB

[Download](#)

British Army in Colonial Australia

The duties of the military in colonial Australia are a useful guide to the records available. The soldiers' duties involved guarding convicts, monitoring Aborigines, pursuing bushrangers, working as mounted police, guarding gold transports, assisting in exploration and the construction of roads, bridges and buildings. Many soldiers settled in Australia permanently and acquired land grants. Find out how to locate a military ancestor, and discover some of the resources held at State Library.



British Army in Colonial Australia [PDF 85 kb]

PDF · 84 KB

[Download](#)

www.slq.qld.gov.au/research-collections/family-history/family-history-research-guides

Family History



Noosa Library Service has a large collection of printed and computer-based resources for family history research. The Family History collection is located in the Heritage Library at the Noosaville branch. Noosa Library Service also provides free access to the billions of searchable records available in leading genealogy databases ancestry.com and findmypast.com.au

For extra help with your research, visit your local genealogy society:

[Cooroy Noosa Genealogical and Historical Research Group](#)
Emerald Street, Cooroy

Ancestry library edition [↗](#) Leading genealogy database containing billions of records for family and local history research. Available for home use by library members on a temporary basis during the library closure.* Ancestry.com have currently made this available until 31 December 2021 – Library card required.

Find my past [↗](#) Leading genealogy database containing billions of records for family and local history research. Available for home use for a limited time during library closure.* For privacy reasons please do not start or update a family tree. There are daily and monthly limits on record views – please be considerate of other users when accessing the database. Library card required.

* Available for free use in library once COVID-19 restrictions are lifted.

Town Histories

For additional information or to see more historic images visit [Heritage Noosa](#) and the [Heritage Library catalogue](#).



COORROY



KIN KIN



PEREGIAN



POMONA



GYMPIE TERRACE



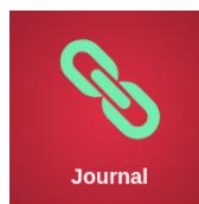
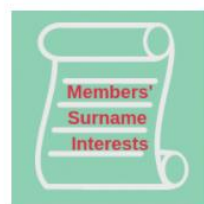
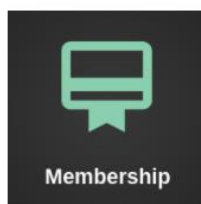
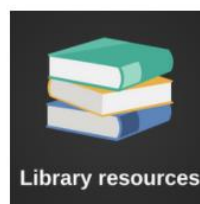
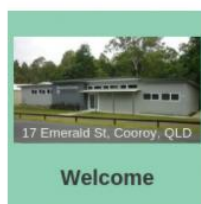
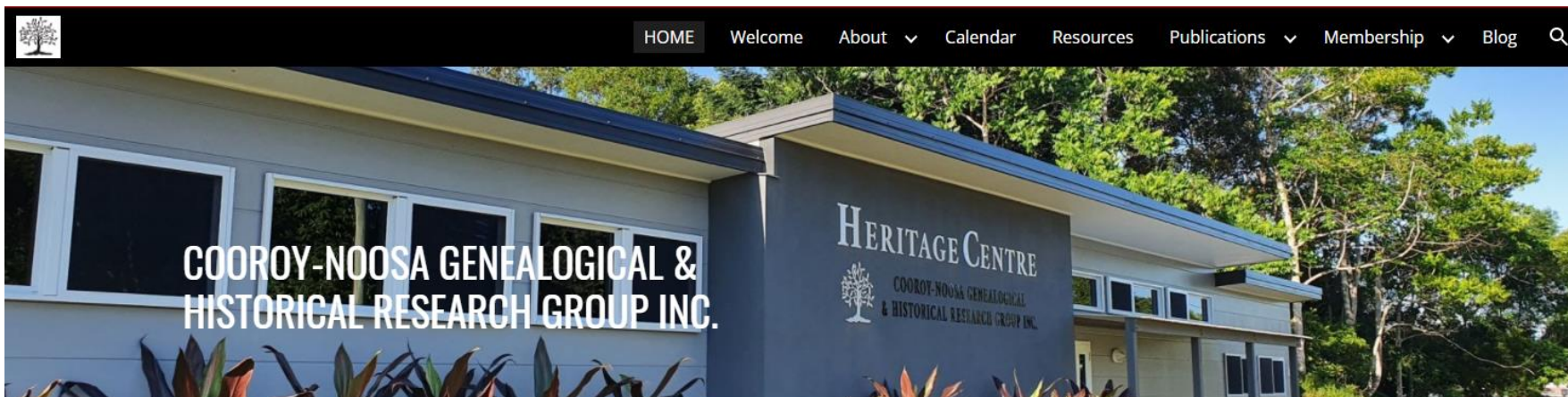
NOOSA HEADS



COORAN



TEWANTIN



www.genealogy-noosa.org.au

Archives

Queensland State
Archives

State Archives &
Records NSW

National Archives of
Australia

www.qld.gov.au/recreation/arts/heritage/archives/search-the-records

Aboriginal and Torres Strait Islander peoples ↓	Australian South Sea Islanders ↓
Business ↓	Convicts and early settlers ↑
<div>Chronological register of convicts 1824-1839</div> <div>St Helena prisoners 1863-1936</div> <div>Prisoners tried, Toowoomba 1864 to 1903</div> <div>Female prisoners admitted, Toowoomba 1887 to 1891</div> <div>Monthly and half yearly returns for Moreton Bay 1829-1837</div> <div>Prisoners discharged, Toowoomba 1869-1879</div> <div>Prisoners admitted, Toowoomba 1895 to 1906</div>	
Courts ↓	Government ↓
Immigration ↓	Lands and Mining ↓
Schools, hospitals and orphanages ↓	Shipping and railways ↓
War ↓	

[About Us](#)[Archives](#)[Government Recordkeeping](#)[Government Records Repository](#)[Our Partners](#)

State Archives
& Records

[HOME](#)[COLLECTION & RESEARCH](#)[PRE-ORDER](#)[EXHIBITIONS](#)[DISCOVER](#)[VISIT](#)[ASK AN ARCHIVIST](#)

News

- Face masks are required in indoor spaces
- Copy service changes 1 February 2022
- 4000+ digitised MSB images now online

Exhibitions

- *How to Move a Zoo* now open
- Visit our online exhibition, *A Thousand Words*
- Touring exhibitions for hire

Quick Links

- Online Indexes
- Research A-Z
- Webinars
- Copy Services

COVID-19 - Reading Room at the Western Sydney Records Centre (WSRC) open by appointment
Face masks are required indoors. Please make an **make an appointment** before placing a pre-order/request. [Learn more »](#)

[Collection](#) [Using Collection Search](#)[Advanced Search](#)[Research A - Z](#)

www.records.nsw.gov.au

EXPLORE

Discover the National Archives

THE COLLECTION

GET HELP



Become an NAA member
Join a unique community of like-minded lovers of
history and culture.



Defence and war service records
Explore our service records to learn more about
your family's war history or commemorate ex-
service members.



First Australians
The National Archives holds many records
relevant to Aboriginal and Torres Strait Islander
peoples and their histories.

• • • • •

Search the collection

Go to RecordSearch [↗](#)

www.naa.gov.au

SON SA 57 **PRICE Solomon** *S. 6*
acc QUEENSLAND DEFENCE FORCE (LAND).

RESULT OF MEDICAL EXAMINATION
 ACCOUNTANT
 28 MAY 1901
 Q'LAND DEF. FORCE.

On Return of a Member of the *2nd* Contingent from Service in South Africa.

Regimental No. *57*
 Contingent *Second*
 Rank *Private*
 Surname *Price*
 Christian Name *Solomon*
 Present Age *22 1/2*
 Length of Service, South Africa *1 Yr 57 Days*
 From where Invalided
 Why Invalided
 Name of Transport *Tongariro*
 Arrived in Brisbane *3rd May 1901*

SECRETARY
 05305
 12 MAY 1901

Hair *Dark Brown*
 Eyes *Dark Blue*
 Complexion *Fair*
 Marks or Scars { *Nil*
 Weight *8 1/2 11 1/2*
 Height *5 1/2 7 1/2 in*
 Chest { Expiration *32*
 Inspiration *34 1/2*

Description on Ballotment

REMARKS BY MEDICAL OFFICER:
 Weight *8 1/2 6 1/2* Chest ... { Expiration *32 1/2*
 Inspiration *35*

I CERTIFY that I have this day made a thorough Examination of No. *57*
Price and find him to be in *fair health*
and fit for medical service.

Chief Secretary
from the 17th inst.
and find him to be in fair health
and fit for medical service.
AR.

[previous](#)[next](#)

Page 1 of 2

Title PRICE, SOLOMAN
 [Regimental No. 57]
 joined 3-5-1901 -
 Boer War Dossier

Contents range 1901 - 1902

Series number B4418

Control symbol PRICE S

Access status Open

Barcode 686145

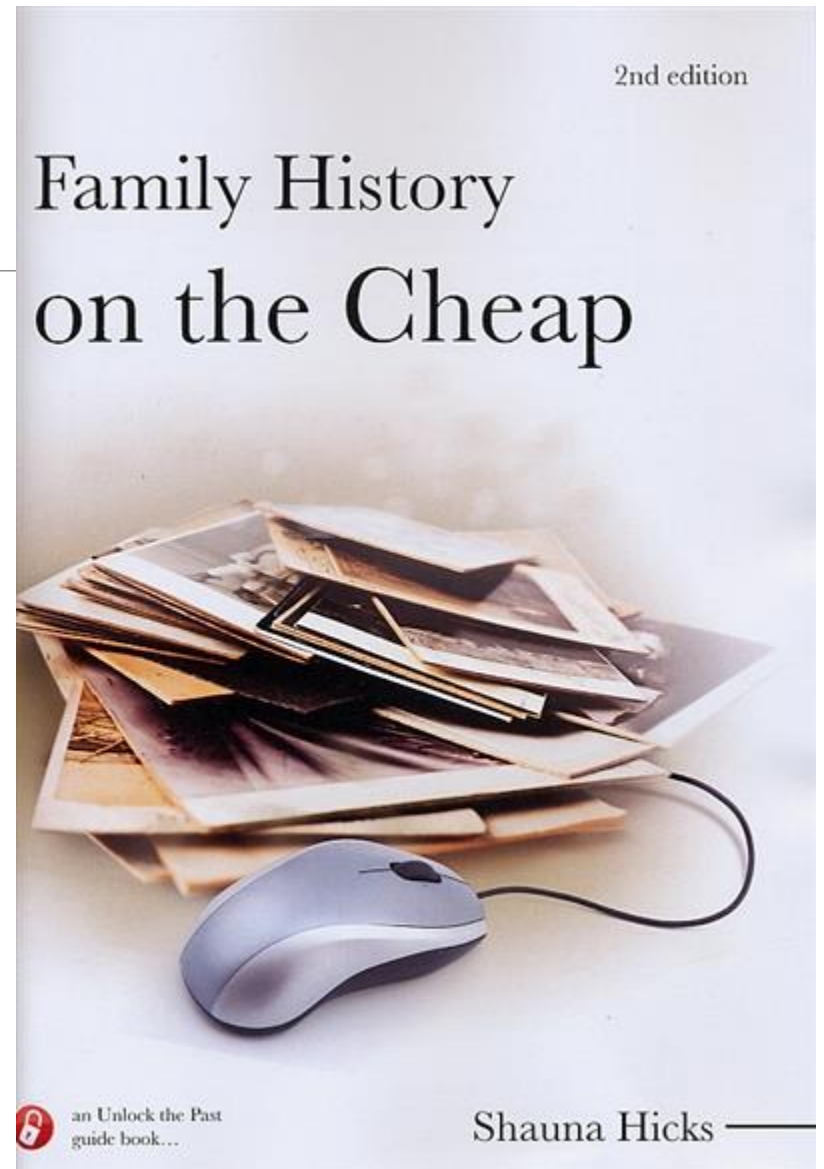


jump to page

[go](#)

Online Resources

- ❑ Gateway sites
- ❑ Family history sites
- ❑ Military sites
- ❑ Photographs



Gateway Sites

CoraWeb

Cyndi's list

GENUKI

National Archives UK

FREE DIGITAL DOWNLOADS Signed-in users can download digital records for free. [Read about our fair use policy and why we are doing this.](#)

THE NATIONAL ARCHIVES

Menu

Search our website



Explore

1,000 years of history

[Help with your research](#)

[Search the catalogue](#)

[Find online collections](#)

Our building is open, including our reading rooms and exhibition spaces.

[Plan your visit and book for our reading rooms](#)



Feature

THE
NATIONAL
ARCHIVES

**WE ARE
20s
PEOPLE**

[Discover 20sPeople](#)

An exciting new programme connecting people of the 1920s with us in the 2020s.



www.nationalarchives.gov.uk

FREE DIGITAL DOWNLOADS While there is limited access to our Kew site, signed-in users can download digital records for free. [Read about our fair use policy and why we are doing this.](#)

THE NATIONAL ARCHIVES

Menu

[Sign in](#) [Register](#) [No items](#)

[Home](#) > [Discovery](#)

[Discovery help](#) [Send us feedback](#)

Explore the catalogue

Access records held by The National Archives and more than 2,500 other archives.

Search for

Between

and

Held by

[Advanced search](#) or [browse](#)

Popular collections



Medals



Wills

What is Discovery?

Discovery holds more than 32 million descriptions of records held by The National Archives and more than 2,500 archives across the country. Over 9 million records are available for download.

Frequent searches

Research guides

Our guides are a great place to start your research. What are you looking for?



Family history



Enter search terms

 [Search GENUKI pages](#)

News

New Help pages are available. See [here](#) or click on Help in the Blue menu on any page. Comments welcome.

Regional Page Links

[UK and Ireland](#)

[England](#)

[Scotland](#)

[Wales](#)

[Ireland](#)

[Isle of Man](#)

[Channel Islands](#)

Technical Links

[Referring to GENUKI](#)

[For potential contributors](#)

[For maintainers](#)



GENUKI provides a virtual reference library of genealogical information of particular relevance to the UK and Ireland. It is a non-commercial service, maintained by a charitable trust and a group of volunteers.

All material on this site is © GENUKI and individual contributors. For permission to re-use material please contact [the GENUKI trustees](#).

Quick Links

[Contents and Site Map](#)

[Search GENUKI](#)

[Gazetteer](#)

[Churches Directory](#)

[Societies](#)

[Frequently Asked Questions](#)

[Guidance for first-time users](#)

[Getting started in genealogy](#)

[Genealogical events](#)

[Who are we?](#)

[GENUKI service status](#)

[Privacy Notice](#)

www.genuki.org.uk

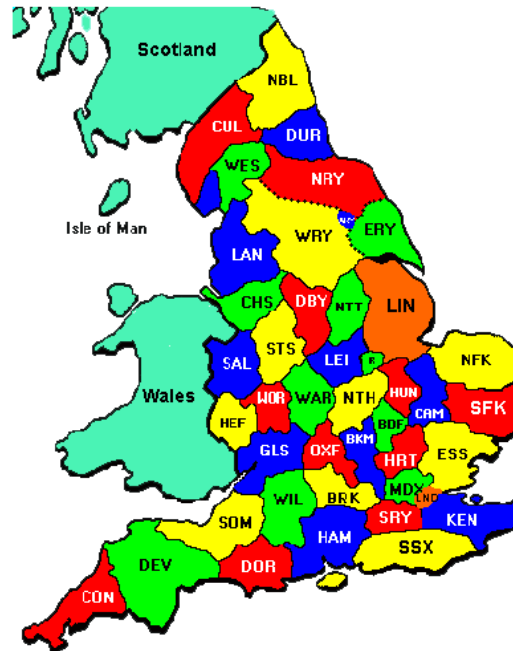
England

Many sets of records were kept for England and Wales together, so that the problems of locating them and using them are very similar in the two countries. For convenience such records are described here, rather than on the British Isles pages.

Counties

N.B. GENUKI is organised on the basis of historic counties. To find which GENUKI pages cover more modern counties and county boroughs, please see: [Modern and Administrative Counties and County Boroughs](#).

- Archives & Libraries
- Bibliography
- Biography
- Business & Commerce
- Records
- Cemeteries
- Census
- Chronology
- Church History [△](#)
- Church Records
- Civil Registration
- Correctional Institutions
- Court Records
- Description & Travel
- Directories
- Dwellings [△](#)
- Emigration & Immigration
- Gazetteers
- Genealogy
- Handwriting [△](#)
- Heraldry [△](#)
- Historical Geography
- History
- Jewish Records [△](#)
- Land & Property
- Language & Languages
- Law & Legislation
- Manors

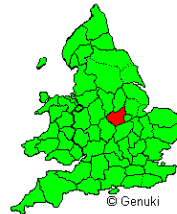


- Maps
- Medical Records
- Merchant Marine
- Migration, Internal
- Military History
- Military Records [△](#)
- Names, Geographical
- Names, Personal
- Newspapers
- Nobility [△](#)
- Occupations
- Periodicals [△](#)
- Politics & Government
- Poor Houses, Poor Law
- Population
- Postal & Shipping Guides [△](#)
- Probate Records
- Public Records
- Religion & Religious Life [△](#)
- Schools
- Social Life & Customs
- Societies
- Statistics
- Taxation
- Town Records
- Voting Registers

www.genuki.org.uk/big/eng

Leicestershire

Archives & Libraries
Bibliography
Biography [△](#)
Business & Commerce
Records [△](#)
Cemeteries
Census
Chronology [△](#)
Church Records
Civil Registration
Correctional Institutions [△](#)
Court Records [△](#)
Description & Travel
Directories [△](#)
Emigration & Immigration [△](#)
Gazetteers [△](#)
Genealogy
Historical Geography [△](#)
History
Land & Property [△](#)
Language & Languages [△](#)
Law & Legislation [△](#)
Manors [△](#)



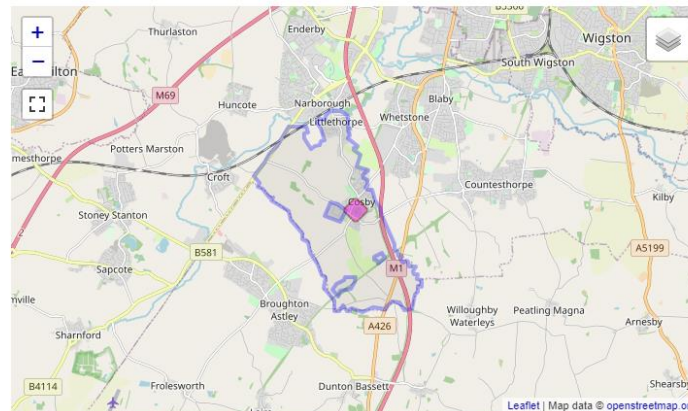
Leicestershire Towns
and Parishes

Maps
Medical Records [△](#)
Merchant Marine [△](#)
Migration, Internal [△](#)
Military History
Military Records
Names, Geographical
Names, Personal [△](#)
Newspapers
Occupations
Politics & Government [△](#)
Poor Houses, Poor Law
Population [△](#)
Probate Records [△](#)
Public Records [△](#)
Schools [△](#)
Social Life & Customs [△](#)
Societies
Statistics [△](#)
Taxation [△](#)
Town Records [△](#)
Voting Registers [△](#)

[View](#) [Nearby churches](#) [Nearby places](#) [Place search](#) [County map](#)

Cosby

Archives & Libraries
Bibliography [△](#)
Cemeteries
Census
Church History
Church Records
Churches
Civil Registration
Description & Travel
Gazetteers
Genealogy [△](#)
Historical Geography
History



Manors
Maps
Military History
Military Records
Names, Geographical
Newspapers [△](#)
Occupations [△](#)
Politics & Government
Poor Houses, Poor Law
Population
Schools
Societies

Description in 1871:

"**COSBY**, a village and a parish in Blaby district, Leicestershire. The village stands on an affluent of the river Soar, near the Midland railway and the Fosse way, 1¼ mile NNE of Broughton-Astley r. station, and 7 SSW of Leicester; and has a post office under Lutterworth. The parish includes also the hamlet of Little Thorpe. Acres, 2,550. Real property, £4,653. Pop., 974. Houses, 228. The property is much subdivided. A number of the inhabitants are stocking-makers. The living is a vicarage in the diocese of Peterborough. Value, £138. Patron, Thomas Pares, Esq. The church is old but good. There are a Baptist chapel and charities £6."

[John Marius **WILSON**'s "Imperial Gazetteer of England and Wales," 1870-72]

Family History Sites

Free sites

- ☐ FamilySearch
- ☐ FreeUKGen
- ☐ Irish Genealogy

Commercial/pay to view/subscription

- ☐ Ancestry (Australia)
- ☐ FindMyPast
- ☐ My Heritage
- ☐ Scotland's People

[HOME](#)[DONATE](#)[ABOUT](#)[VOLUNTEER](#)[NEWS](#)[CONTACT](#)

Free UK Genealogy provides free, online access to family history records. We work with a team of dedicated volunteers to create high-quality transcriptions of public records from governmental sources, parish churches, and other trusted institutions. We believe that **Open Data** and Open Source are key to making and keeping public records accessible to all. We work with others with the same concerns.

Visit our project websites to search our records:

Search
FreeBMD

285,000,000 births,
marriages and deaths

Search
FreeCEN

42,500,000 individuals from
census data, from 1841 to 1891

Search
FreeREG

53,000,000 records
from parish registers



- Home
- Search
- Browse Documents
- Lives
- Historical Background
- About This Project
- Copyright & Citation Guide
- Contact Us

Sources for London Lives

A fully searchable edition of **240,000 manuscripts** from **eight archives** and **fifteen datasets**, giving access to **3.35 million names**.

To search London Lives use the boxes on the right or go to the [Search Pages](#).

March 2018 Update

User accounts and workspaces have now been restored. For information on creating a user account, see [How to Register](#). Users can once again use the [workspace function](#), but material that was in workspaces before August 2016 has not been restored. Other changes include the correction of tagging errors and broken links, clarification of the terms under *London Lives* data is made available for reuse, and additions to our bibliography of works that use *London Lives* as a source.

For further information on all these changes, as well as previous site updates, please see [What's New](#).

The Digital Panopticon: Tracing London Convicts in Britain and Australia, 1780-1925

Some *London Lives* datasets are incorporated in this new AHRC funded [website](#), which traces the lives of 90,000 convicts sentenced at the Old Bailey between 1780 and 1875, linking Old Bailey trials to relevant entries in fifty databases of criminal justice and civil records. The 'Life Archives' allow users to discover both the pre- and post-trial histories of Old Bailey convicts. They allow users to see differences between the punishment sentences handed down by the court and the punishments convicts actually experienced, and make it possible to compare the impact of imprisonment and transportation on convicts' lives.

SEARCH

Keyword

Surname Given Name

Reference ID

From To
 1680 1820

SEARCH

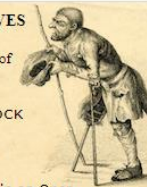
[More Search Options](#)

LONDON LIVES

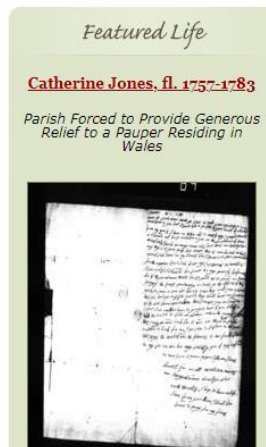
Poverty, Crime and the Making of a Modern City, 1690-1800

TIM HITCHCOCK AND ROBERT SHOEMAKER

Now available in an Open Access Electronic Edition



London Lives can also be searched in:



www.londonlives.org

Welcome to www.irishgenealogy.ie

www.irishgenealogy.ie is a website that allows users the opportunity to search a wide range of record sources in their search of their Irish Ancestry. The website is home to the on-line historic Indexes of the Civil Registers (GRO) of Births, Marriages, Civil Partnerships and Deaths and to Church Records of Baptism, Marriage and Burial from a number of counties.

The website also operates as a search portal that allows users to search the following record sources as well:

www.irishgenealogy.ie is a website operated by the Department of Tourism, Culture, Arts, Gaeltacht, Sports and Media



Antrim civil parishes

Counties

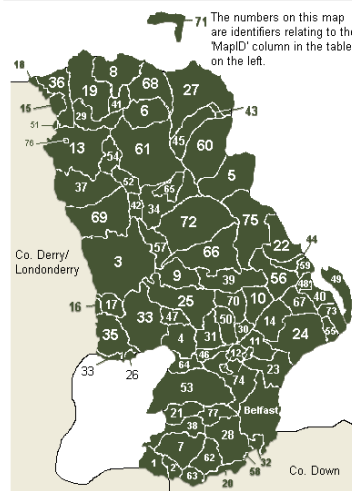
RC parish maps

Civil parish maps

Poor Law Union maps

Click on a parish name, or a parish on the map, to see more.

- 1: Aghagallon
- 2: Aghalee
- 3: Ahoghill
- 4: Antrim
- 5: Ardclinis
- 6: Armoy
- 7: Ballinderry
- 8: Ballintoy
- 9: Ballyclug
- 10: Ballycor
- 11: Ballylinny
- 12: Ballymartin
- 13: Ballymoney
- 14: Ballynure
- 15: Ballyrashane
- 16: Ballyscullion
- 17: Ballyscullion Grange
- 18: Ballywillin
- 19: Billy
- 20: Blaris
- 21: Camlin



www.johngrenham.com

Catholic parishes



Island Magee civil parish, Antrim

[Island Magee Ordnance Survey map from 1831-3](#)

[Island Magee parish map on townlands.ie](#)

[Island Magee contemporary Google map](#)

Adjoining parishes

[Donegore](#) 31 ([Antrim](#))

[Templecorran](#) 73 ([Antrim](#))

Island Magee: common surnames & households

Hill	17
Wilson	14
Browne	13
Templeton	13
Kane	11
Milliken	10
Nelson	10

Click on a place-name below to see its Griffith's Valuation record.

Click on 1901 or 1911 for its census return.

Click on the research-source links to see the records for Island Magee.

Click on any parish on the map to go to its page.

Places in Island Magee

Balloo	1901	1911
Ballycronan Beg	1901	1911
Ballycronan More	1901	1911
Ballydown	1901	1911
Ballyharry	1901	1911
Ballykeel	1901	1911
Ballylumford	1901	1911
Ballymoney	1901	1911
Ballymuldrogh	1901	1911

A summary of research sources for Island Magee

[1 record\(s\) in Lewis's Topographical Dictionary \(1837\)](#)

[8 headstone transcripts/graveyards](#)

[22 census-type record\(s\)](#)

[2 estate record\(s\)](#)

[12 book format local histories](#)

[11 church records](#)

[8 local or family history journal\(s\)](#)

[No directories listed](#)

[4 General Register Office record\(s\)](#)

[45 wills records](#)

[34 newspaper indexes](#)

Positional map



www.johngrenham.com

Church records for Island Magee

Denomination	Church	Baptisms	Marriages	Burials	Location	Ref.	Status
Roman Catholic	Larne	Aug 15 1821 - Nov 23 1828 Dec 14 1828 - Feb 9 1841 Mar 8 1852 - May 12 1872	Sept 21 1821 - Nov 9 1828 Dec 28 1828 - Oct 1 1840 Apr 11 1852 - June 3 1872		NLI	Imaged online (Pos. 5472) Transcribed at Ancestry & FindMyPast	Open for public research
Roman Catholic	Larne	1821 - 1883	1821 - 1883		PRONI	MIC.1D/68, 90	Open for public research
Roman Catholic	Larne: St. Mac Nissi	No records microfilmed			NLI		
Roman Catholic	Larne: St. Mac Nissi	No records microfilmed			PRONI		Open for public research
Roman Catholic	Larne: St. Mac Nissi	1828 - 1900	1828 - 1900		UHF		Online transcript (\$)
Presbyterian	Islandmagee (1st)	1829-1935	1829-1905		PRONI	MIC.1P/326	Open for public research
Presbyterian	Islandmagee (1st)	1829-1983 (extracts)				Online	
Presbyterian	Islandmagee (2nd)	1854-1937	1848-1933		PRONI	MIC.1P/337	Open for public research
Presbyterian	Islandmagee (2nd)		1819-1891 (extracts)			Online	
Church of Ireland	Islandmagee	1825-1878	1827-18441	1829-1878			Held by the Public Record Office in 1919.



Search for your Scottish Ancestors




Search all Collections

Scottish Indexes Conference

SATURDAY 15 JANUARY 2022



Learn how to trace your Scottish
family history 

www.scottishindexes.com



www.scottishindexes.com

- > Home
- > Log-in
- > Password reminder
- > Change password
- > Change email address
- > **JOIN NOW**
- > Latest newsletter
- > Newsflash

**Free to search
and free to join!**



Information

- > Read this first
- > Help & Advice
- > Census Links
- > FAQs
- > Success Stories
- > About Us
- > Privacy Policy
- > User Agreement
- > Contact Us

Tools

- > Index of Incorrect Surnames
- > Index of Maiden Names

[Need larger text?](#)

Welcome to LostCousins

Are you serious about researching your family tree, but concerned about posting information online? If so, you've come to the right place, because LostCousins is the **ONLY** family history website able to match you with others researching the same ancestors

AUTOMATICALLY, ACCURATELY & CONFIDENTIALLY

Simply enter the relatives on your family tree who were recorded in selected US, Canadian, British, or Irish Censuses - then click the Search button.

Your information stays hidden

100% accurate automated matching means that nobody else needs to see your information - yet when you do find a 'lost cousin', you can be certain you're related!

Achieving such results requires a little more effort upfront, but it's well worth it - the accuracy of the LostCousins system **SAVES** you a lot of time and hassle compared to other sites.

Find living relatives and discover more

When you find a 'lost cousin' it's a great opportunity to share family photos and stories that have been passed down the generations - things you'll never find in public record offices and archives. You might even decide to co-operate on future research.

The best genealogy newsletter - and it's FREE!

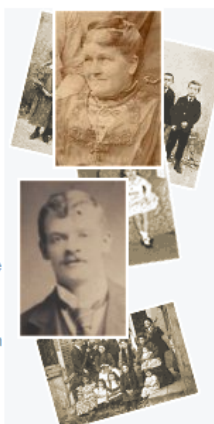
As a LostCousins member you will be entitled to receive our newsletter, which is full of useful tips and articles to help you knock down 'brick walls' and take your research to a new level. Here's what members say about the newsletter:

"Your letters are so informative especially for those at a brick wall and not sure where to look next."

"Thanks again for the fabulous Lost Cousins newsletters - they are crammed with invaluable information."

"Many thanks for your informative and interesting newsletters. I really look forward to them and when I spot them in the inbox they are the first thing I scroll to."

To see the latest issue click [here](#).



find my past

**English and
Welsh Parish
records**

[Search now](#)

**Download our free
ancestor chart!**

[GO](#)

FREE



**Already registered?
Log in here...**

Email Address

Password

LOG-IN

> Forgotten password?

**TOP 100
Most Popular
GENEALOGY SITE
2015**



**Tim
Bentinck**

known to millions as the voice of David Archer, joined LostCousins in November 2004: "It's a very good idea, and a well-designed site". Click for more...



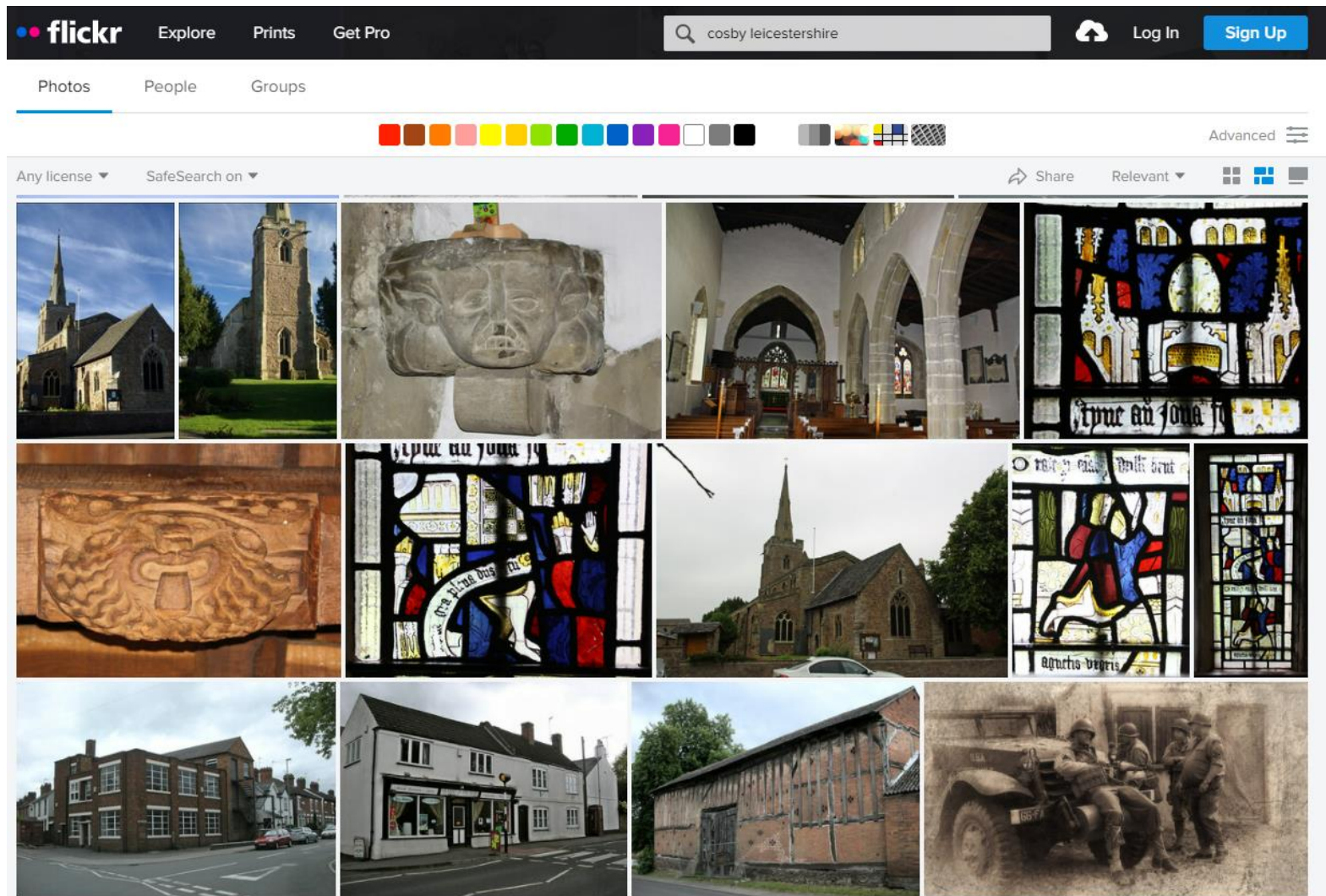

**DISCOVER
THE PEOPLE
AND PLACES
IN YOUR DNA**

Get started

[ancestryDNA](#)

© HULTON ARCHIVES/GETTY IMAGES

www.lostcousins.com



www.flickr.com

flickr Explore Prints Get Pro

British Library | Photos cosby leicestershire

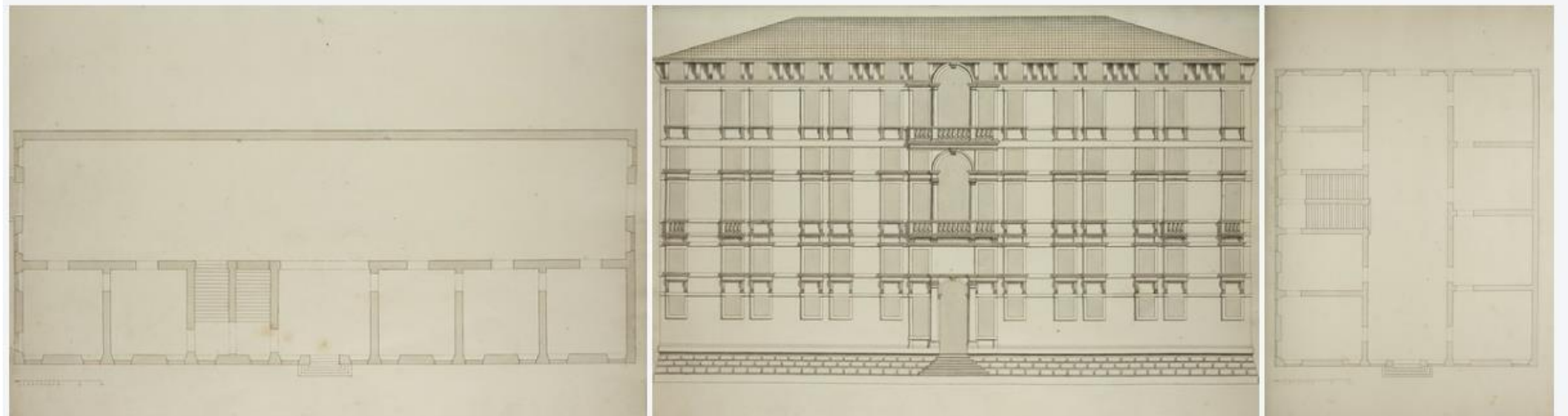
Log In Sign Up

British Library Follow

PRO The British Library 49.3K Followers • 30 Following

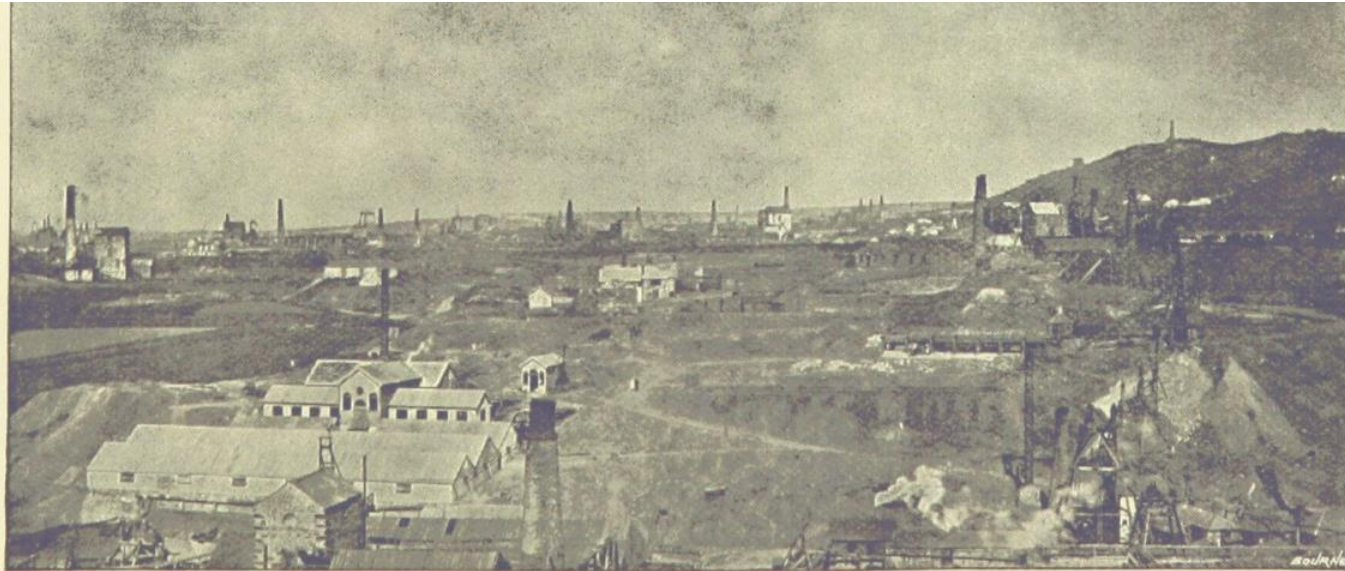
1,073,492 Photos Joined 2007

About Photostream Albums Faves Galleries Groups



70 results





GENERAL VIEW OF THE MINING DISTRICT OF CORNWALL.



British Library

+ Follow

British Library digitised image from page 8 of "Cornish Mining Interviews ... Illustrated, etc"

Image taken from:

Title: "Cornish Mining Interviews ... Illustrated, etc"

Author(s): Thomas, Herbert, editor [person]

British Library shelfmark: "Digital Store 07108.ee.3"

Page: 8 (scanned page number - not necessarily the actual page number in the publication)

Place of publication: Camborne

Date of publication: 1896

Type of resource: Monograph

2,174
views

0
faves

0
comments

Taken on December 10, 2013

No known copyright restrictions

Show EXIF

Tags

bldigital date:1896

pubplace:Camborne]

https://en.wikipedia.org/wiki/Cosby,_Leicestershire



Main page
Contents
Current events
Random article
About Wikipedia
Contact us
Donate

Contribute
Help
Learn to edit
Community portal
Recent changes
Upload file

Tools
What links here
Related changes
Special pages
Permanent link
Page information
Cite this page
Wikidata item

Print/export
Download as PDF
Printable version

In other projects
Wikimedia Commons

Languages
Cebuano
Español
Polski
Svenska
Türkçe

Edit links

Cosby, Leicestershire

From Wikipedia, the free encyclopedia

Coordinates: 52°33.1′N 1°11.6′W



This article **needs additional citations for verification**. Please help improve this article by adding citations to reliable sources. Unsourced material may be challenged and removed.

Find sources: "Cosby, Leicestershire" – news · newspapers · books · scholar · JSTOR (August 2019) (Learn how and when to remove this template message)

Cosby is a village in the [English](#) county of [Leicestershire](#). Cosby is located in the south of the county near the larger villages and towns of [Whetstone](#), [Blaby](#) and [Wigston](#). Its proximity to the city of [Leicester](#) means it is part of the [Leicester Urban Area](#). The village is administered by Blaby District Council. Cosby has a brook which runs through the village and eventually serves as a tributary to the River Soar.

The village's name probably means 'farm/settlement of Cossa'. 'Farm/settlement of Kofsi' has also been suggested.^[1]

It is not known how the name originated, and it is first recorded as "Cossebi" in the *Domesday Book* in 1086 with 40 families living in the village. Cosby was described as a "considerable village" in 1810 (with a population of 555) by historian John Nichols. In 1991 it had a population of 3,400 and in 2001 a population of 3,489, increasing to 3,506 at the 2011 census.^[2]

Cosby's 'Scandinavian' place name indicates that the village existed here several hundred years earlier, dating to the time of the Danish invasion in the earlier parts of the 9th century. However it is possible that there may have been an even earlier settlement here in Saxon or even Roman times given that the Fosse Way bounds the parish to the north.

The parish church is the 14th century St Michael and All Angels'. It also has Methodist and Baptist churches. Cosby has two schools, Cosby Primary School and independent school Brooke House Day School. Cosby has football, rugby and cricket teams which all participate in Leicestershire's sporting leagues. The teams play their home games at Victory Park.

A 15th century granary, known as the Tithe Barn, sits next to the church and now forms a popular dining venue. It was taken over by H.W. Coates in the 1960s and known as the Coates Barn, before being restored in the 1980s into commercial office space. Original *wattle and daub* was saved along with other period elements and these are now on display for patrons.^{[3][4][5]}

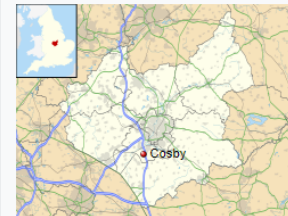
Close to the church is the early 17th century house known as Brooks Edge. This is the historic home of the Armston family who lived in the village for more than 800 years. One member of this pro-Royalist family escaped after the battle of Naseby and hid out in Whetstone Gorse. Cromwell's soldiers questioned many people as to his whereabouts, including his small son who refused to divulge his father's hiding place. According to the legend, this took place in the family home at Brooks Edge and was celebrated in William Frederick Yeames's famous painting "And When Did You Last See Your Father".

In 1767, the medieval open fields of the village were enclosed by Act of Parliament, bringing to an end the system of agriculture, which had been practiced in Cosby from before the Norman Conquest in 1066. The post enclosure revolution in farming resulted in Cosby becoming a more industrial village with framework knitting followed by boot and shoe manufacture dominating the 19th and early 20th centuries. During this period, the population of the village more than doubled from 555 in 1801 to 1,351 in 1901.

Council houses were built along Park Road and in Lady Leys during the 1920s and 1930s, while the Settlement was established in 1938 when 48 houses each with a third of an acre to house out of work families from Wales and the North East of England. By 1951 the population had risen to 1,533, five times that of the village in the 17th century. In the 1960s large private housing estates were also built making the village one of Leicestershire's increasing number of dormitory settlements.

The *Great Central Railway*, the last main line to be built from the north of [England](#) to [London](#), opened on 15 Mar 1899 and ran past the east side of Cosby on an embankment. Although there was never a *station* at Cosby, this section of the line was well known for the lengthy curve which for northbound trains was to the right (east) after coming out of which the city of Leicester would be directly ahead and the route would be almost ruler straight all the rest of the way to the

Cosby

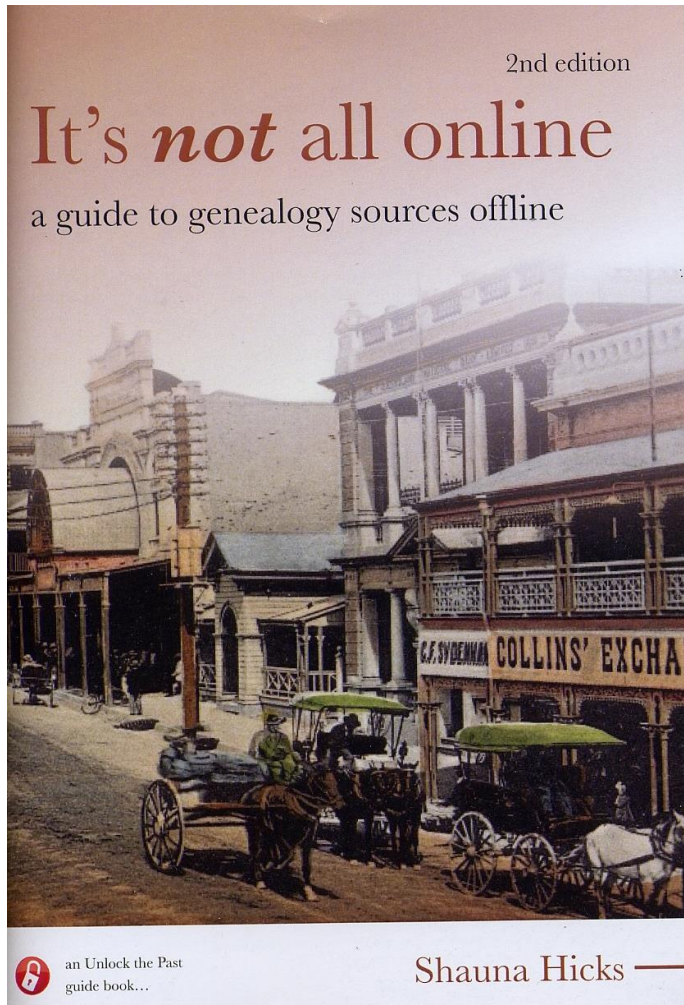


Location within Leicestershire

Population	3,506
District	Blaby
Shire county	Leicestershire
Region	East Midlands
Country	England
Sovereign state	United Kingdom
Post town	LEICESTER
Postcode district	LE9
Police	Leicestershire
Fire	Leicestershire
Ambulance	East Midlands
UK Parliament	South Leicestershire

List of places: [UK](#) · [England](#) · [Leicestershire](#)
 52°33.1′N 1°11.6′W

Last Thoughts



- ❑ Lots of resources
- ❑ Contact local genealogy/family history society
- ❑ Explore websites online – read the guides
- ❑ Remember not everything is online
- ❑ Have fun!