



Mining Ancestors: Knowing where to Look

Shauna Hicks

www.shaunahicks.com.au



Introduction



- ▶ Background history for context
- ▶ Archives & Libraries
- ▶ Trade Unions & Company Records
- ▶ Historical Societies & Museums
- ▶ Miners' Health
- ▶ Newspapers & Photographs



Background History



- Miners moved around
- Major mining rushes (they followed new discoveries)
 - South Australia 1840s
 - Victoria & NSW 1850s
 - Queensland 1860s
 - Tasmania 1870s
 - Western Australia 1890s
- Remember the trans Tasman connection



One of My Mining Families – a married sister and her three single half siblings

- ▶ Bullen & Potter families started in Sydney early 1850s
- ▶ Then to Victoria - Ballarat & surrounds mid 1850s
- ▶ Then to Queensland – Gympie & Gladstone early 1870s
- ▶ Then to Western Australia – Kalgoorlie & Coolgardie 1890s
- ▶ Three generations

Mining in Australia

From Wikipedia, the free encyclopedia

Or New Zealand



This article's **lead section** may not adequately **summarize** key points of its contents. Please consider expanding the lead to **provide an accessible overview** of all important aspects of the article. Please discuss this issue on the article's [talk page](#).

(September 2010)

Mining in Australia is a significant [primary industry](#) and contributor to the [Australian economy](#). Historically, mining booms have also encouraged [immigration to Australia](#). Many different ores and minerals are mined throughout the country.

Mining has had a substantial environmental impact in some areas of Australia. Although mining services, equipment and technology are being exported, the mining sector employs 2.2% of the total labour force.

Contents [\[hide\]](#)

- 1 History
 - 1.1 Gold rushes
- 2 Location
- 3 Minerals and resources
 - 3.1 Coal mining
 - 3.2 Uranium mining
 - 3.3 Natural gas
- 4 Entrepreneurs and magnates
- 5 Economics
- 6 Technology and services
- 7 Lifestyle
- 8 Environment and politics
- 9 Mining Disasters
 - 9.1 New Australian Gold Mine
 - 9.2 Mount Kembla



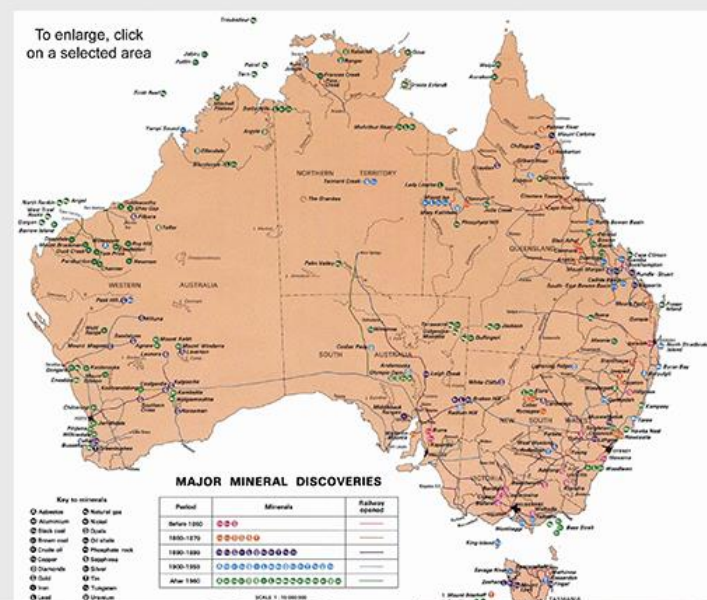
Super Pit gold mine at Kalgoorlie in Western Australia is Australia's largest open-pit mine



Shauna Hicks Perth Jun 2018

http://en.wikipedia.org/wiki/Mining_in_Australia

AUSTRALIA'S MAJOR MINERAL DISCOVERIES



BIBLIOGRAPHY OF AUSTRALIAN MINING HISTORY

Compiled by Mel Davies

Published in June 2002, with additional material to 2010 The Australasian Mining History Association is deeply indebted to the Australian Heritage Commission for granting permission to extract the core of the accompanying mining history bibliography from the work of Peter Donovan & Associates, A Mining History of Australia, Part 1 (1995).

The bibliography is divided into a General Australian Mining history list for those works which examine subjects on an Australia-wide basis, and into lists that concentrate on detail from specific States/Territories. Each of the above categories is then sub-divided into a General category; Minerals of different kinds; Energy Sources; Precious Stones; Associated Social and Economic

www.mininghistory.asn.au/mining-history

Bibliography of Australian Mining History (1.4Mb PDF file)

Hint: use the Search button in Acrobat to search for a name, place etc.

 Save
Australian Government
Geoscience Australia



australian atlas of
minerals resources, mines
& processing centres

Home | About the Atlas | Contact Us | Site Index

Mapping

Quick Search

Australia's Identified Mineral Resources

Education

Downloads

History

Links

User Guide

History of Australia's Minerals Industry

- [Interactive History](#)
- [The Story of Minerals In Australia](#)
 - [The Goldrush of the 1850s](#)
 - [1870 - 1900](#)
 - [1900 - 1950](#)
 - [The Resources Boom](#)
 - [The Situation Today](#)

Interactive History

[View an interactive history of Australia's minerals industry.](#) This download shows Australia's mineral development over time, highlighting which deposit was discovered when and includes the ability to do this for a particular commodity group. You also can choose a specific point to zoom into and view information about that specific mine.

To [view the interactive history](#), requires [Google Earth](#) to be installed on your computer.

[View the interactive history in Google Earth](#)

or

Download
Google Earth (Free)

[www.australianminesatlas.gov.au/
history/index.html](http://www.australianminesatlas.gov.au/history/index.html)

Shauna Hicks Perth Jun 2018

Mining Methods

- [Gold Mining Methods](#)
- [Kentucky Coal Education](#)
- [Mining Methods](#)
- [Underground Mining Methods](#)

Educational Links

- [Blackwater International Coal Centre](#)
- [Latest World Earthquakes - United States Geological Survey](#)
- [MCA Education](#)
- [Oresome Resources](#)
- [Sovereign Hill](#)

Search Trove

[Search Help](#)

[Home](#)
[About PANDORA](#)
[Blog](#)
[Partners](#)
[Notification form](#)
[Services](#)
[Statistics](#)
[User survey](#)
[Contact us](#)
[Other archives](#)
[Disclaimer](#)
[NLA home page](#)

[Home](#) < [Historic gold mining sites - Australian Internet Sites](#)

Gippsland region

- [Historic gold mining sites in the Kilmore - Yea region of Victoria](#)
- [Historic gold mining sites in the St Andrews mining division](#)
- [Historic mining sites in the Gippsland mining district](#)

North East Victoria

- [Historic gold mining sites in the north east region](#)

North West Victoria

- [Adelaide New Moon Mine site](#)
- [Armstrong Gully alluvial sinkings](#)
- [Cambrian Reef](#)
- [Carman's tunnel : great international mine](#)
- [Eaglehawk Union Co.](#)
- [Fryer's Co. mine](#)
- [German Gully](#)
- [Golden Gully alluvial workings](#)
- [Historic gold mining sites in Amherst Mining](#)
- [Historic mining sites in the Heathcote \(Waranga South\) mining division](#)
- [Historic mining sites in the Inglewood, Wedderburn and St Arnaud mining division](#)
- [Historic mining sites in the Maldon mining division](#)

- [Historic mining sites in the Maryborough and Avoca mining divisions : part 2 : site gazetteer](#)
- [Historic mining sites in the Rushworth-Waranga north mining division](#)
- [Leviathan Reef](#)
- [Lightning Hill](#)
- [Lord Nelson Company, St Arnaud](#)
- [McIntyre sites](#)
- [New Chum goldfields mine sites](#)
- [Old Havelock Company](#)
- [Oswalds estimates mine](#)
- [Raywood Reservoir](#)
- [Redcastle Creek cyanide works](#)
- [Sebastopol Reef sites](#)
- [Tappit Hen mine and Tamagulla railway station](#)
- [Tamagulla state battery](#)

South West Victoria

- [Historic gold mining sites in Hepburn mining division](#)
- [Historic gold mining sites in the south west region of Victoria](#)
- [Quartz Reef Mine and shallow alluvial sinkings](#)

- 1851:** Gold officially discovered at Livingstone Creek, Omeo, by men employed by Edward Crooke, licensee of Hinnu Mungey station, about 10 miles below Omeo - small rush followed - about 100 - worked with shovel and tin dish - almost abandoned mid-1852. Area prospected as far as Cobungra station. Among early parties was Hedley. (Flett, p. 169)
- 1852:** Gold found at Bindi on Tambo River. (Flett, pp. 171-2)
- 1854:** Early in year, 50 miners at Omeo, surfacing and sluicing - later that year, 180 men 'between Mt Livingstone and the Swamp', working in creek or on eastern bank terraces. (Flett, p. 170)
- 1854-6:** Mining camp called Omeo - became a town in 1856. (Flett, pp. 170-71)
- 1855-7:** First in series of long sluicing races constructed - Champagne and Co. (Frenchmen) built theirs early in 1855 - they were original party to work the area now known as the Oriental claims. Fitzgerald and party commenced cutting races, which delivered water to Bloomfield's Gully, and (later) Pioneer claims.¹
- 1856-7:** Gold found in tributaries of Livingstone Creek - Dry Creek and New Rush Creek opened, 1857. (Flett, p. 170).
- 1856+:** The alluvial deposits in the Dry Gully area (now loosely grouped as the Oriental claims) 'are over one hundred feet thick in parts [and] apparently occupy the bed of an ancient tarn or mountain lake, and are auriferous for almost the complete depth...'²
- 1857-60s:** Fitzgerald and party took up claims on hill at junction of Livingstone Creek with Dry Gully and Mountain Creek in 1857 - working ground as Pioneer claim, ground sluicing, in 1858. Pioneer and French parties competed for water rights - Fitzgerald took up agricultural ground around Dry Hill and west of Livingstone Creek - restricted others from building water rights around his ground.³
- 1863-4:** Township and Pioneer reefs opened up. (Flett, p. 171)
- June 1864:** 425 alluvial miners (275 Chinese, 150 Europeans) - no quartz miners. Population focused on Livingstone Creek (265) and Mitta-mitta River, from Cobungra to Wombat Creek (120) - 20 at Tambo River and Swift's Creek, 15 at Wombat Creek. Chinese population does little mining in winter months - cannot endure the cold at Omeo.

BEECHWORTH GOLDFIELD

- | DATE | HISTORY: • |
|-----------------|--|
| 1852: | First discovery on present site of Beechworth, February 1852. ¹ |
| 1853: | Woolshed (part of Reedy Creek, about 6 km below Beechworth) opened 1853 - extraordinarily rich by 1855 - township extended for 2_ miles, but almost deserted within a few years. ² |
| 1855: | Discoveries of new fields at Eldorado in 1855 and Wooragee (Magpie Creek), north of Beechworth, in 1856. ³ |
| 1856: | Small party cut a tail-race from the Spring Creek falls up to the alluvial flats on Spring Creek, east of Beechworth, then virtually abandoned, 1856 (future Rocky Mountain Co. claim) - had been held in very small claims and worked by sinking and driving, then tub-and-cradled - tail-race 20 chains long, blasted 2-8 ft deep through rock - took 18 months to complete, cost £3,000 - not deep enough to drain deepest ground - much gold left behind. ⁴ |
| 1859: | Spring Creek, 1859 - called Spring Creek above the Upper Falls and Woolshed Creek below the Lower Falls - originally worked in paddocks - slabs and bark used to prevent sides falling in - then worked over again with sluice-boxes - now being worked for third time, by improved sluicing methods. ⁵ |
| 1860: | 2,310 European miners, 2,139 Chinese ⁶ - Upper Three-Mile Creek worked since 1852 - now chiefly taken up by Chinese, sluicing (likewise Lower Three-Mile/Bowman's). ⁷ |
| 1861: | Battery of 16-head, 15-hp steam engine erected at Two-Mile Reef, 1861. ⁸
• The 'great' Excelsior tail-race, Reid's Creek, being extended by blasting through tough granite, 15 ft deep, 1861. ⁹ |
| 1861: | Bawden's (or Rawden's) Steam Co., Woolshed, 1861 - 'have given up the system they first adopted, of ground sluicing their claim, and in consequence of having little or no fall to work upon, lifting up the tailings and water by buckets on an endless band of vulcanised India rubber some 15 ft and discharging it over the bank into the creek; they now only lift the water and bank up the tailings as well as they can.' ¹⁰ |
| 1861: | German and Durham crushing machine, 2-Mile Creek, 1861 - 12-head, 12-16 hp engine. ¹¹ |
| 1861-62: | European miners leaving for the Lachlan and New Zealand, 1861-2 - Chinese taking over ground. ¹² |



CORNISH ASSOCIATION OF VICTORIA



- Home -

[Home](#) [About us](#) [Association Events](#) [News](#) [Activity Groups](#) [Branches](#) [Library & Research](#) [Photo Galleries](#) [Links](#)

Quick Links

To view Images from the
Eaglehawk Dahlia and
Arts Festival
[See Photo Galleries](#)

[Bendigo Group Re-
established](#)

[Library & Research Centre
Hours](#)

[Library & Research Centre
Catalogue](#)

[Latest News](#)

[Ballarat Branch](#)

[Geelong Branch](#)

[OverlandGold](#)

Welcome to the "Home Page" of the Cornish Association of Victoria Inc, Australia.

Browse the menus above and enjoy all we have to offer. If you live in Victoria, Australia you might like to join our vibrant Association. We meet at the **Oakleigh Baptist Church Hall**, which is situated at the corner of **Warrigal Road and Moorookyle Ave, Oakleigh**. (Melway Ref. Map 69 E10).

For all enquiries contact the Secretary: [Miss June Whiffin](#).

Monthly meetings are held the 3rd Saturday, between 1.30 pm and 4.30 pm. February to November and the 2nd Saturday of December.

Library and Research facilities are also situated at the Church Hall, and open monthly February to November on the 3rd Saturday, 4th Monday and 5th Saturday. Consult the Library page for hours -
<http://www.cornishvic.org.au/rescen.html>

Take a look at the menus above and there is sure to be information and/or images of interest.

Coming Dates in 2018

Details of [forthcoming speakers](#) and events

Ballarat Branch: Meets on the 1st Saturday of
EVEN months at 2.00 pm. The venue is the
Skinton Street Uniting Church Hall corner Skinton &





Archives & Libraries



- State – Fact Sheets, Published Guides, Online Catalogues (inter library loans)
- University Collecting Archives
 - Noel Butlin Archives Centre
- Specialist
 - Bendigo Regional Archives Centre



GOVERNMENT OF
WESTERN AUSTRALIA



STATE RECORDS
OFFICE OF
western australia

[Site map](#) | [Accessibility](#) | [Contact us](#)

Search...

Search

[Go to whole of WA Government search](#)

Contact

☐ Phone +61 8 9427 3600

☐ Opening Hours: Tue – Fri 10am – 4.30pm

[ABOUT US](#) [NEWS AND EVENTS](#) [STATE RECORDKEEPING](#) [ARCHIVE COLLECTION](#) [STATE RECORDS COMMISSION](#)

[Home](#) › [Archive Collection](#) › [The Collection](#)

[ABORIGINAL RECORDS](#)

[ARCHITECTURAL RECORDS](#)

[BIRTHS, DEATHS AND MARRIAGES](#)

[COLONIAL SECRETARY'S OFFICE RECORDS](#)

[CONVICT RECORDS](#)

[COURT RECORDS](#)

[EDUCATION AND SCHOOL RECORDS](#)

[HARBOUR AND SHIPPING RECORDS](#)

[HOSPITAL AND HEALTH RECORDS](#)

[LOCAL GOVERNMENT RECORDS](#)

[MAPS ONLINE](#)

[MINING RECORDS](#)

[PASSENGER LISTS AND IMMIGRATION RECORDS](#)

[POLICE RECORDS](#)

MINING RECORDS


The State Records Office holds various series of records relating to mining and resource development within Western Australia. These records have been created by several government agencies including the Department of Mines and its successor agencies, the Department of Industrial Development and its successor agencies, and the various Mining Registrars and Mining Wardens from throughout the State.

Department of Mines



The Department of Mines was created on 1 January 1894 in response to the rapid growth in mining in Western Australia following the discovery of significant deposits of gold.

The records of the Department of Mines and its successor agencies can be located through the listings in the hardcopy AN 350 and 539 finding aids available at the State





State Records Office of WA

Government of Western Australia, Department for Culture and the Arts.

Series S1028 - INDEXES (NOMINAL) - MINING TENEMENTS

Series

Holdings

Quick search

▼ Series S1028 - INDEXES (NOMINAL) ...

Item 6 - Mining tenements - lease h...

Item 7 - Mining tenements - lease n...

Identity area

Reference code	AU WA S1028
Title	INDEXES (NOMINAL) - MINING TENEMENTS
Date(s)	1892-01-01 - 1909-12-31 (Creation)
Level of description	Series
Format	Volumes

Context area

Name of creator	AU WA A16 - DEPARTMENT OF MINES (1894-01-01 - 1992-07-01) Administrative history : The Department of Mines began operations on 1 January 1894. Previously, the regulation of mineral exploration and mining activities in Western Australia had been the responsibility of the Colonial Secretary's Office and the Lands Department. Initially, ... »
Repository	State Records Office of Western Australia

Content and structure area

Scope and content	Listed alphabetically by name of lease or lease-holder and noting district and date lease cancelled. Details of the leases are available from the Mines Department. Quote the lease number found in these indexes.
System of arrangement	Alphabetical


Reports

Export



Dublin Core 1.1 XML

Related people and organizations

AU WA A16 - DEPARTMENT OF MINES (Creator)



State Records Office of WA

Government of Western Australia, Department for Culture and the Arts.

Series S1524 - QUARTERLY RETURNS - LEASEHOLDERS

Series

Holdings

Quick search

▼ Series S1524 - QUARTERLY RETURN...

Item 1 - Quarterly returns - leasehol...

Identity area

Reference code	AU WA S1524
Title	QUARTERLY RETURNS - LEASEHOLDERS
Date(s)	1897-05-31 - (Creation)
Level of description	Series
Format	Volumes

Context area

Name of creator	AU WA A276 - MINING REGISTRAR - CUE (1893-08-01 - 1989-12-31) Administrative history : The Mining Registrar, Cue, in the Murchison district was established in 1893 to deal with mining leases. The Mining Registrar, by 1911, also performed the functions of Magistrate, Licensing Magistrates, District Registrar and Electoral Registrar. The ... »
Repository	State Records Office of Western Australia

Content and structure area

Scope and content	List of goldmining leases registered in the Cue district showing no and name of lease, manager or attorney and date.
System of arrangement	None discernible

Reports

Export

Dublin Core 1.1 XML

Related people and organizations

AU WA A276 - MINING REGISTRAR - CUE (Creator)



Search

Order Records

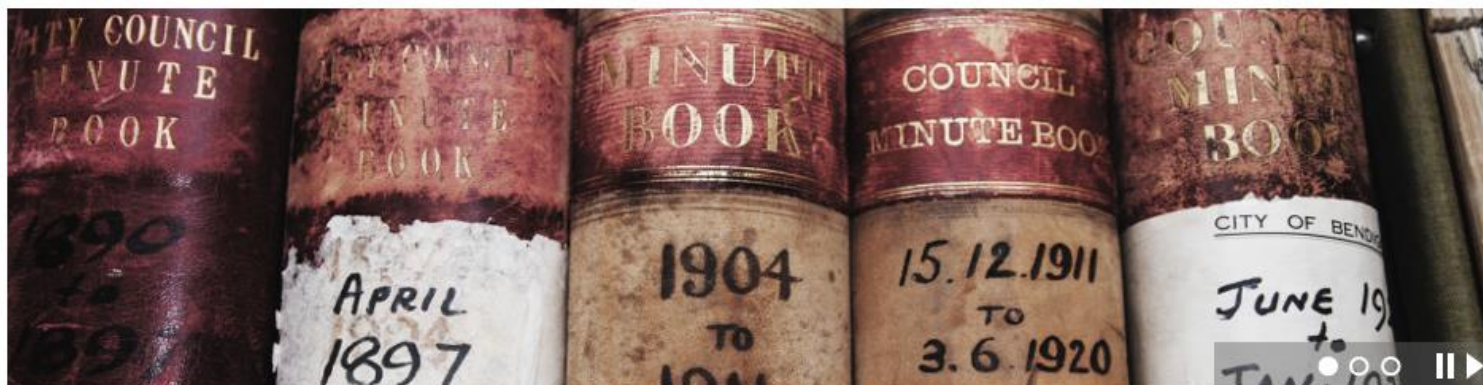
e-Newsletter

Open Hours

Contact Us

[Home](#) [About Us](#) [Visit Us](#) [Collections](#) [Family & Local History](#) [Guides & FAQs](#) [What's On](#) [Digital Records](#)

Home



Petitions

The 'Petitions of the People' project has digitised 284 petitions dating from 1870-1899. These can be searched, viewed and downloaded. You can search for an ancestor or family name in one of the lists with 14,240 names transcribed from the original petitions. See an ancestor's original signature, and you might find an address and an occupation as well.

Shauna Hicks Perth Jun 2018



Records about gold mining

COMPANY RECORDS

The Noel Butlin Archives Centre holds records of a number of companies involved in gold mining. Some examples of company records are:

Adelaide Steamship Company Ltd

Outwards correspondence relating to private freighting accounts & syndicates of J Turnbull (Secretary and General Manager), 1888-1892 (N46/566)

Australian Agricultural Company

Letters to General Superintendent regarding potential gold deposits, 1853-1856 (1/46/1)

Mineral prospecting papers including letters, tracings and reports in connection with prospecting in the Port Stephens district, 1855-1904 (1/64/4)

Clarke and Co (Melbourne)

Series of maps and plans of various goldfields including Bendigo, Chewton, Daylesford, Kalgoorlie, Milano and Post Office Hill, 1910-1940 (19/2-29)

Elder Smith and Company

Correspondence and related papers between Elder, Smith and Company and Wallaroo Mining Company, BHP Limited, Hercules Gold and

Peel River Land and Mineral Company

Despatches from the early years of the company documenting initial success in the search for gold followed by the decline in its value to the company. They include monthly reports of gold licences issued, 1853- 1870 (78/15/1 to 9)

Return bo
Currawill
of half ya
at gold fie

Return bo
Currawill
yearly acc
(115/10)

Leases, co
letters and
other material relating to the formation of the
Hanging Rock Gold Mining Company, 1887-1888
(121/29)

UNION RECORDS

The records of many unions include files about gold miners. The items listed below are just a sample.

Australian Workers Union (Head Office)

Industrial Court Transcripts Gold and

Plan of Milano Gold new lease, Mount Monger

AU NBAC 19-25 - Item - 1939 -

Part of Clarke and Company deposit

Shows main shaft and levels.

Map of Boulder Belt of the Golden Mile, Kalgoorlie

AU NBAC 19-22 - Item - 1932 -

Part of Clarke and Company deposit

Produced by SC Ward, Adelaide, showing named and numbered mine leases.



Search for ...

[All our websites](#)

[Our Catalogue](#)

[Go to whole of WA Government search](#)

Dead Reckoning

How to find your way through the
genealogical jungle of Western Australia

Indexes and Catalogues: A- M

[Arrivals](#)

[Biographical](#)

[Births, Baptisms,
Deaths, Burials &](#)

[Marriages](#)

[Cemeteries](#)

[Colonial Secretary's
Office](#)

[Correspondence](#)

[Convicts](#)

[Inquests](#)

[Land Owners](#)


[Members Interests](#)

[Directories](#)

[Military](#)

[Mining Lease Holders](#)

[Dead Reckoning](#) > [Indexes and Catalogues](#) > [A-M](#) > [Mining Lease Holders](#)

 [printer friendly](#)

Share this page [f](#) [t](#) [i](#) [su](#)

Mining Lease Holders

[Mining lease holders names 1 January 1892 to 31 December 1909 \[microform\].](#)

Bayswater, W.A. : Western Australian Genealogical Society, [1996].
[929.39 MIN]

This is a microfiche index of mining lease holders 1892-1909. It has been taken from a Mines Department Nominal Index to Mining Tenements ([CONS 4603/6 - Record Series 1028](#)) and provides the name of the lease holder, lease number, goldfield and date of lease holding.

Page last updated: Tuesday 23 November 2010

[www.slwa.wa.gov.au/dead_reckoning/indexes_and_cat
alogues/a-f2/mining_lease_holders](http://www.slwa.wa.gov.au/dead_reckoning/indexes_and_catalogues/a-f2/mining_lease_holders)

Western Perspectives on a Nation *Images from Australia's west 1901-2001*



[The Land](#) | [The Sea](#) | [Architecture](#) | [Mining](#)
[Transport](#) | [Settlement](#) | [Clothing](#) | [Women](#)



[acknowledgements](#)

© LISWA 2001

[copyright & reproduction](#)

www.slwa.wa.gov.au/wepon/index.html

Western Perspectives on a Nation Images from Australia's west 1901-2001



[Introduction](#) [Gold](#) [Iron Ore](#) [Bauxite](#) [Coal](#) [Oil & Gas](#) [Asbestos](#) [Mineral Sands](#) [Other](#)



[Home](#) [The Land](#) [The Sea](#) [Architecture](#) [Trans](#)

[acknowledgements](#)

© LISWA 2001

[co](#)

<http://slwa.wa.gov.au/wepon/mining/html/gold.htm>

Shauna Hicks Perth Jun 2018

Western Perspectives on a Nation



Mining



[Introduction](#) * [Gold](#) * [Iron Ore](#) * [Bauxite](#) * [Coal](#) * [Oil & Gas](#) * [Asbestos](#) * [Mineral Sands](#)
[Tin](#) * [Other Minerals](#)

Gold

[Introduction](#)

[Prospecting for gold](#)

[Underground mining 1900-1972](#)

[Sons of Gwalia gold mine 1900-1960](#)

[Open cut mining](#)

The discovery of gold in Western Australia during the 1890s brought prosperity to what had been, up until then, a remote and struggling colonial backwater. The rush of prospectors to Coolgardie (1892) and Kalgoorlie (1893), chiefly from the eastern colonies of Australia, helped tip the balance of public opinion in favour of Federation in the referendum of 1900.



The thousands of prospectors who flocked west, seeking their individual fortunes, helped establish a significant gold mining industry by the start of the twentieth century.



Trade Unions & Company Records

- ▶ Miners often belonged to a union
- ▶ Membership records may be useful
- ▶ Mining not always solitary pursuit
- ▶ Companies may be worth looking at – especially shareholders



AUSTRALIAN TRADE UNION ARCHIVES

[Home](#)[About](#)[Search](#)[Browse](#)

Welcome to the Australian Trade Union Archives

A gateway for researchers and scholars of labour history

- [Find people](#)
- [Find trade unions](#)
- [Find peak union bodies](#)
- [Find employer bodies](#)
- [Find government agencies](#)
- [Find publications](#)

Search

GO

e.g. name of organisation, person.

→ [Advanced search](#)

Parties to the Award



[Parties to the Award](#)

A Guide to the pedigrees and archival resources of Federally registered trade unions, employer associations and their peak councils in Australia 1904-1994.

Timeline



[Timeline](#)

A timeline relating to labour history in Australia 1788-2001.

[Amalgamated Engineering Union, **Kalgoorlie** Branch - Minute Books ...](#)

www.atua.org.au/archives/Larc00337.htm

Amalgamated Engineering Union, **Kalgoorlie** Branch - Minute Books - Australian Trade Union Archives, ATUA is a biographical, bibliographical and archival ...

[Journal Article - 'It All Started in the Mines'?: The 1934 **Kalgoorlie** ...](#)

www.atua.org.au/bib/Lpub00520.htm

The 1934 **Kalgoorlie** Race Riots Revisited - Australian Trade Union Archives, ATUA is a biographical, bibliographical and archival database of Australian Trade ...

[Journal Article - The 1934 **Kalgoorlie** Riots - Australian Trade Union ...](#)

www.atua.org.au/bib/Lpub00720.htm

Journal Article - The 1934 **Kalgoorlie** Riots - Australian Trade Union Archives, ATUA is a biographical, bibliographical and archival database of Australian Trade ...

[Banner - Australian Trade Union Archives](#)

www.atua.org.au/archives/Larc01246.htm

Title: Banner; Repository: Western Australian Museum; Description. Amalgamated Society of Engineers, **Kalgoorlie** Branch: Double-sided banner. Formats ...

[Amalgamated Society of Carpenters & Joiners of Australia - Records ...](#)

www.atua.org.au/archives/Larc01051.htm

Western Australian Branch: Minutes; cashbooks; records of Boulder, **Kalgoorlie** and Coolgardie branches. Quantity: 0.2 m; Access: Contact repository for details ...

[Browse Archival Resources by Repository - J - Australian Trade ...](#)

www.atua.org.au/archives/atua_j_arc_repository.htm

... 1928-1975 - Amalgamated Engineering Union, **Kalgoorlie** Branch - Minute Books - Amalgamated Engineering Union, Western Australian Branch - Clearance ...

Australasian Coal & Shale Employees Federation (1916 - 1990)

Miners' Federation

From 1916
To 1990
Functions Trade Union (Federal)
Reference No 087V

Summary

Registered federally in 1913 as the Australasian Coal Miners' Association this union was buoyed significantly in 1914 by the inclusion of members from the defunct Victorian Coal Miners' Association. In 1916 the Australasian Coal Miners' Association changed its name to the Australasian Coal & Shale Employees' Federation which operated until 1990 when it amalgamated with the of Australasia to form the United Mineworkers' Federation of Australia. In 1992 the BWIU Amalgamated Union in 1992 and later that year with the Federation of Australasia and the Operative Plasterers' & Plaster Workers' Union of Australia to form the Construction Forestry & Mining Employees' Union. This union was reregistered as the Construction Forestry Mining & Energy Union in 1993 following amalgamations with the Federated Furnishers' & Decorators' Union of Australia.

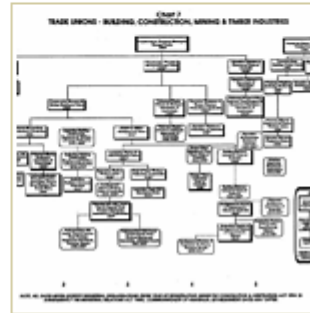


Chart 7: Trade Unions - Building, Construction, Mining and Timber Industries

Timeline

? - 1874 Sandhurst Miners Association

? - 1874 Buninyong Miners Association

? - 1874 Blackwood Miners Association

? - 1874 Clunes Miners Association

? - 1874 St Arnaud Miners Association

? - 1874 Malmsbury Miners Association

? - 1874 Stawell Miners Association

? - 1874 Maldon Miners Association

? - 1874 Haddon Miners Association

1870s - c. 1883 Creswick Miners Association

1874 - c. 1884 Amalgamated Miners Association of Victoria

1907 - 1914 Victorian Coal Miners Association

c. 1884 - 1916 Amalgamated Miners Association of Australasia

1913 - 1916 Australasian Coal Miners Association

1916 - 1990 Australasian Coal & Shale Employees Federation

1990 - 1992 United Mineworkers Federation of Australia

1992 Construction Forestry & Mining Employees Union

1992 - 1993 Construction Forestry Mining & Energy Union (i)

1993 - Construction Forestry Mining & Energy Union (ii)

www.atua.org.au

Shauna Hicks Perth Jun 2018

The Australian Women's Register

An initiative of The National Foundation for Australian Women (NFAW) in conjunction with The University of Melbourne

[Home](#)

[About](#)

[Explore themes](#)

[Browse](#)

[Donate](#)

[Search](#)

BROWSE PUBLISHED RESOURCES

A B C D E F G H I J K
L M N O P Q R S T U
V W Y Z

Site Exhibition

Authors

Criena Fitzgerald and National Foundation for Australian Women

Title

Karlkurla Gold: A History of the Women of Kalgoorlie-Boulder

Type of Work

Exhibition

Imprint

Australian Women's Archives Project, December 2012

Url

<http://www.womenaustralia.info/exhib/wikb/wikb-home.html> 

Karlkurla Gold

A HISTORY OF THE WOMEN OF KALGOORLIE-BOULDER

www.womenaustralia.info/exhib/wikb/wikb-home.html

[Home](#)

[Introduction](#)

[Themes](#)

[Women](#)

[Resources](#)

[Gallery](#)



Karlkurla Gold: A History of the Women of Kalgoorlie-Boulder is a tribute to the women of Kalgoorlie-Boulder. Living in a town with a unique role in the development of Western Australia, both as a centre of mining and for its place on the edge of the Nullabor Plain, Kalgoorlie-Boulder women have made important contributions to this region, before and after white settlement.

- [Read the introduction to the project](#)
- [Dig deeper into some themes](#)
- [Browse alphabetical listing of women](#)
- [Browse alphabetical lists of archival and published resources](#)
- [Browse gallery of images and sounds](#)



Historical Societies & Museums

- ▶ Google search – place name & historical society
- ▶ Royal Western Australian Historical Society
- ▶ Also try genealogy & family history societies
- ▶ Private individuals
 - ▶ Outback History
 - ▶ The Goldminer's Database (NZ)



**EASTERN GOLDFIELDS
HISTORICAL SOCIETY INC.**
Preserving & promoting Goldfields history



Search this Website



GOLDFIELDS HISTORY MAP

VIEW TIMELINE

View Map

Coolgardie

Shire of Coolgardie

39km SW of Kalgoorlie-Boulder

THIRD LARGEST TOWN IN W.A.

So rapidly did Coolgardie develop that stone and brick buildings were soon being erected as is shown in the illustration.

Within less than 10 years of the finding of gold at Fly Flat Coolgardie was the third largest town in Western Australia, its population being exceeded only by Perth and Fremantle.

With the exception of the public buildings on the extreme left of the illustration not a vestige remains of all the others.

www.kalgoorliehistory.org.au/towns/Coolgardie



Affiliated Societies

[Home](#) / [Affiliates](#) / [Affiliated Societies](#)

A network of affiliated historical societies, comprising more than seventy organisations and over two thousand members, has been developed across Western Australia. These societies support a growing community awareness and appreciation of local history and heritage. The Society supports the affiliated societies' annual State History Conference, which provides opportunities for members to meet each other and gain valuable knowledge from guest speakers and workshops.

Home

What's new

Affiliated societies

Links

Search website

Shop

Collections

Society

[Albany Historical Society \(Inc.\)](#)

[Army Museum of WA](#)

[Augusta Historical Society \(Inc\)](#)

[Australian Lebanese Historical Society Inc.](#)

[Australind & Districts Historical Society](#)

www.histwest.org.au/affiliates/affiliated-societies



why donate?

DONATE TO OUTBACK FAMILY HISTORY

[Home](#) [Feedback](#) [Testimonials](#) [FAQ](#) [About](#) [Links](#) [Contact Us](#)



Search This Site

Go



Go

[Aboriginal History](#)
[Book Finder](#)

The Place for Local and Family History on the Western Australian Goldfields

Do you want to know about your family history and heritage? Enter your family name into our site search and discover today!

- Do you want to know more about your families lives in the Central Goldfields of Western Australia or do you want to know more about the history of this vast region?
- The resources and information on this site are provided free for all family and local history researchers.
- The aim of Outback Family History is to provide you with information on the lives and ancestry of individuals on the Central Goldfields of Western Australia.
- We endeavour to continually seek out new records to add to our ever growing resources and in this way to preserve the family history of our region..

www.outbackfamilyhistory.com.au

Shauna Hicks Perth Jun 2018

[Cemeteries](#)

[Hotels](#)

[Maps of the Goldfields](#)

[Military](#)

[Boer War Soldiers](#)
[War Memorials](#)
[Western Mail Photo Index](#)
[WW1 Soldiers](#)

[Miners](#)


[Miscellaneous](#)

[People](#)

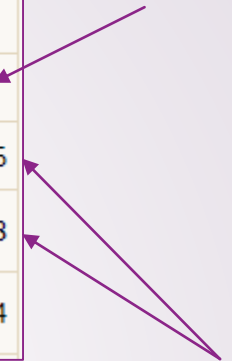
[Early Deaths 1891-1898](#)
[Electoral Roll](#)
[Employment](#)
[Lodge Records](#)
[Marriages](#)
[Men of WA \(Book\)](#)
[Photographers](#)
[Post Office Directories](#)
[Schools](#)

[Places on the Goldfields](#)

[Place Index A-Z](#)



BULLEN	Brenton	10mths	ANG	17/02/1971
BULLEN	Dorothy Howard	38	ANG	6/11/1920
BULLEN	Elizabeth	68	METH	6/10/1921
BULLEN	George	72	ANG	2/10/1932
BULLEN	Harry Francis	12	ANG	15/07/1916
BULLEN	Hector James	2	ANG	16/04/1908
BULLEN	Wayne Mitchell	7mths	GEN	27/01/1964



George Bullen
 Born Magpie, VIC 1860
 Married Norton, QLD 1892
 Died Kalgoorlie, WA 1932

George's
 sons

[www.outbackfamilyhistory.com.au/records/record.php?
 record_id=646&town=Kalgoorlie](http://www.outbackfamilyhistory.com.au/records/record.php?record_id=646&town=Kalgoorlie)

LOUDEN	Alexander	2	PRES	8/10/1923
LOUDEN	Alice Eva	75	METH	12/09/1970
LOUDEN	David Allen	35	METH	31/08/1929
LOUDEN	David Andrew	88	ANG	2/04/1942
LOUDEN	Elizabeth	71	METH	10/12/1929
LOUDEN	Elsie	13	PRES	20/04/1913
LOUDEN	Eva	64	METH	30/12/1958
LOUDEN	George	2	PRES	9/09/1910
LOUDEN	Julie	4hrs	ANG	2/10/1952
LOUDEN	Matthew Forsyth	47	PRES	6/06/1923
LOUDEN	Robert Frederick	93	METH	7/09/1983
LOUDEN	Thomas	56	PRES	24/04/1926
LOUDEN	Walter Edward	79	METH	2/04/1980

Elizabeth Bullen

Born Magpie, VIC 1858

Married Gympie, QLD 1877 to David Anderson (Andrew)

Louden – 10 children all born in QLD 1878-1901

Died Kalgoorlie, WA 1929

www.outbackfamilyhistory.com.au/records/record.php?record_id=758&town=Kalgoorlie

ENQUIRY ORDERED.

An enquiry is to be held into the cause of death of Mrs. Anna Grenfell, who resided with her husband and family on the Boulder Block. Deceased is said to have died as the result of a confinement, but Dr. Bisset, who was called in afterwards, refused to give a certificate of death. Mr. A. J. Evans, J.P., will conduct the inquest at 10.30 to-morrow.

The Evening Star (Boulder, WA : 1898 - 1921) / Mon 27 Jul 1903 /

Anna Elizabeth Loudon
married William Grenfell
Gympie QLD 1902

Died Kalgoorlie WA 1903

Shauna Hicks Perth Jun 2018

The West Australian (Perth, WA : 1879 - 1954) / Wed 29 Jul 1903 /

CORONER'S INQUIRY.

Kalgoorlie, July 28.

The sudden death of a married woman named Anna Elizabeth Grenfell, which occurred last Saturday after her confinement, engaged the attention of the Coroner's Court, at Boulder, to-day. The inquiry arose through the doctors, called in just prior to death, refusing to give a certificate of death.

William Grenfell, the husband of the deceased, said his wife was confined last Wednesday morning. Witness did not engage a medical man, as Nurse McDonald, who attended deceased, said it was unnecessary. Between the time of her confinement and that of her death, his wife frequently complained of neglect on the part of Nurse McDonald in leaving her to attend to other cases.

GOLDRUSH ONLINE

HOME

JOURNAL

LINKS

THE GOLDMINER'S DATABASE

Search over 66,000 records of goldminers
from the goldrushes of New Zealand
spanning the years 1861 to 1872

Family Name

☒ Wild Card

☐ Exact Match

First Name

Optional

☒ Wild Card

A special release for the 150th Anniversary
of the opening of the Thames Goldfield:

GOLDRUSH TO THE THAMES
New Zealand 1867 to 1869

by Kae Lewis

Goldrush to the Thames

New Zealand 1867 to 1869



RECORDS INCLUDED IN THE GOLDMINER'S DATABASE

[Otago Mining Records \(1861 - 1866\)](#)

[Thames Mining Records \(1867 - 1872\)](#)

[Explanation of the Record Types in the Database \(First column in the results chart\).](#)

[Notes on the Thames Goldfields and searching the Database.](#)

[Miner's Rights in Thames.](#)

[The Major Goldrushes of the 1800s.](#)



Miners' Health

- ▶ A dangerous occupation
- ▶ Accidents (minor, fatalities, disasters)
- ▶ Miners phthisis
 - ▶ **Anthracosis** \An`thra*co"sis\, n. (Med.) A chronic lung disease, common among coal miners, due to the inhalation of coal dust; -- called also collier's lung and miner's phthisis.

HOSPITAL SERIES

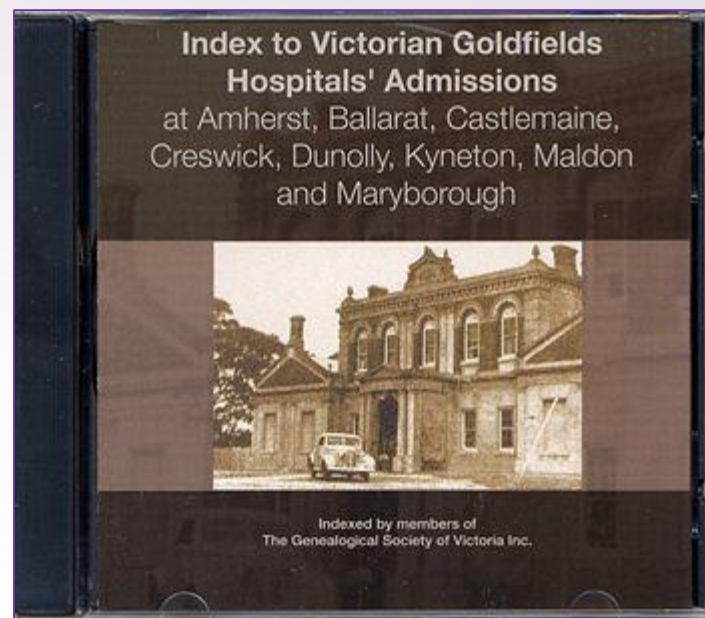
The Victorian Goldfields Hospitals Index: The Hospitals and the Information the Records Contain.

The CD is an amalgamation of indexes to records of the following eight hospitals. They are all admission records, except that which we have called the Kyneton Hospital Family record:

Amherst Hospital 1869-1888
Ballarat Hospital 1856-1913
Castlemaine Hospital 1855-1920
Castlemaine Benevolent Asylum 1860-1922
Creswick Hospital 1863-1882
Creswick Hospital outpatients 1873-1877
Creswick Hospital 1883-1894
Dunolly Hospital 1860-1900
Kyneton Hospital Admissions Register 1862-1885
Kyneton Hospital Family Record 1869-1884
Maldon Hospital 1864-1905
Maryborough Hospital 1855-1907

The index comprises ten fields of information: surname; given name(s); admission date; age of patient; patient's place of birth; whether single, married or widowed; occupation; residence; and source.

Various additional information is contained in the records.



GSV @ Home

Learn what YOU can access from Home

Download and view the relevant files below

www.gsv.org.au

- [Genealogical Index of Names](#) (GIN)
 - Search approximately 4 million entries mainly relating to Victoria. Entries may include a digital image



miner's phthisis 75 results

LANGUAGE

Australian English

75

LEVEL OF DESCRIPTION

All

Item

72

Series

3

ARCHIVAL INSTITUTION

All

State Records Office of Western A...

75

CREATOR

All

AU WA A159 - MINING REGISTRA...

1

AU WA A154 - MINING WARDEN - ...

1

AU WA A16 - DEPARTMENT OF MI...

1

NAME

Proclamation of Miner's Phthisis Act 1922, Criticism of Miner's Phthisis Act Amendment Bill by Messrs Dodd, C...
AU WA S20 cons964 1925/1445 · Item · -

Claims for Compensation Under Miner's Phthisis Act
AU WA S20 cons964 1926/0257 · Item · -

Federated miner's union (Boulder) Re establishment of a worn out miners fund
AU WA S20 cons964 1907/2603 · Item · -

Miner's Phthisis Act Prospecting rates for T B miners
AU WA S20 cons964 1928/0832 · Item · -

The Miner's Monthly
AU WA S126 cons3508 1/113 · Item · -

Applications for miner's rights
AU WA S266 cons3714 01 · Item · 1902-01-01 - 1910-12-31

Miner's Phthisis Act Land Settlement Scheme for Examiners
AU WA S20 cons964 1926/1576 · Item · -

Miner's Phthisis Act Claims for Compensation

MINERS' PHTHISIS.

A sitting of the Royal Commission appointed to inquire as to the prevalence of lung diseases amongst miners will be held at the School of Mines, Kalgoorlie, on Monday morning. Any one desirous of producing evidence to the commissioner (Dr. Cumpston) is invited to attend this sitting of the commission. Dr. Cumpston devoted the whole of Thursday morning to an examination of some dozen or so of miners, who presented themselves before him at the Workers' Hall, Boulder and who gave him such particulars as they could of the course which the fell disease had run in their cases. The executive of the W.G.F.M.U. made the requisite arrangements, and, unfortunately, had but little difficulty in providing the necessary subjects.

The Evening Star (Boulder, WA : 1898 - 1921) / Sat 23 Jul 1910

Report of the Royal Commission on Miners' Lung Diseases, together with minutes of evidence, appendices, illustrations / presented by the Minister for Mines, 5th December, 1911

Western Australia. Royal Commission on Miners' Lung Diseases.



Print Material | 1912.

Available at 2nd Floor Heritage Stack (Call number: Q 616.24 WES) plus 1 more see all



Request it

Additional actions:





Diseased and healthy lung (1st of 2)

Compare these sections cut from a diseased lung with large cavities (left) and a pink, healthy lung (right). The diseased lung shows a case of miner's phthisis (also known as silicosis) which has led to tuberculosis. Quartz dust is inhaled by miners, and trapped in the lungs causes silicosis making the victim more susceptible to diseases such as tuberculosis and pneumonia.



VICTORIAN MINING ACCIDENT INDEX

Victorian Mining Accidents Index (1850s-1940s) compiled by Dave Evans (2001 sample)

To purchase the more comprehensive index with more than 9100 names on CD (2006) please email devans11@optusnet.com

Peer-categories: [VICTORIAN MINING ACCIDENT INDEX](#) [1891 WOMEN'S SUFFRAGE PETITION](#) [SURNAMEs](#)

[All](#) [A](#) [B](#) [C](#) [D](#) [E](#) [F](#) [G](#) [H](#) [I](#) [J](#) [K](#) [L](#) [M](#) [N](#) [O](#) [P](#) [Q](#) [R](#) [S](#) [T](#) [U](#) [V](#) [W](#) [X](#) [Y](#) [Z](#)

Name	Date	K/I/O	Status	Dep	Comments	District	Division	Source
Paap, John	1870/01/21	Injured				Ballarat	Winter's Freehold Co.	Dickers M. R.
Pabst, Luis	1870/00/00	Killed			Fall down shaft	Sandhurst		Dig.Evans)
Pabst, William	1935/10/29	Killed	33 Y. O.		Fell out of cage	Sandhurst	Nell Gwynne Mine	(C.H.Evans)(Dig.Evans)
Packham,	1900/10/02	Injured	5 Y. O.		Fall down shaft	Ballarat	ward & Party Shaft	(C.C.A.)
Padfield, William J.	1881/03/15	Killed	Married,	1		Ararat	Raglan	(C.I.R.)
Paen, Ah	1858/00/00	Killed			Fall of earth	Castlemaine		(Dig. Evans)
Page, Andrew	1864/00/00	Killed				Ballarat	Newtown	(PRO) (Glen C)

My Account

Username

Password

Remember Me ☐

• [Forgot your password?](#)

Queensland mining accidents

Download a printable version of [Queensland mining accidents \[PDF 256 KB\]](#)

Guide only
not the index

Queensland mining accidents were published annually in the *Queensland Legislative Assembly Votes and Proceedings* (later known as *Queensland Parliamentary Papers*) from 1882 to 1945.

Queensland Mining Accidents Index

A searchable online index of Queensland mining accidents up to 1945 is now available in One Search.



Join us

Become an SLQ member now to
access our services, collections and

www.slq.qld.gov.au/resources/family-history/mining-accidents

Data

› Datasets

› Categories


› Organisations

› Tags

› Maps and geospatial

› Other data types

Datasets

 Printmining accidents 

Order by Relevance ▼

1 dataset found for "mining accidents"State Library of Queensland - Queensland Mining accidents 1882-1945

9 recent views 543 total views

Information about mining accidents published annually in the Queensland Legislative Assembly Votes and Proceedings (later known as Queensland Parliamentary Papers) from 1882 to...

CSV

Organisations

Environment and Science (1)

Categories

Mining (1)

Tags

workplace health and safety (1)

miningindustry (1)

mining accidents (1)

mining (1)

history (1)

State Library of Queensland (1)

<https://data.qld.gov.au/dataset?q=mining+accidents>

SLQ-Queensland mining accidents 1882-1945

URL: <https://data.gov.au/dataset/41701e1a-b1cc-4d8b-98d1-c0dcbffc2795/resource/63fd8050-0bab-4c04-b837-b2ce664077bf/download/slqq...>

Information about mining accidents published annually in the Queensland Legislative Assembly Votes and Proceedings (later known as Queensland Parliamentary Papers) from 1882 to 1945. Search the index at the State Library of Queensland in the Family History Indexes on One Search, the library catalogue. http://onesearch.slq.qld.gov.au/primo_library/libweb/action/search.do?vid=FamHis&fromLogin=true

Data Explorer

</> Embed

Add Filter

Grid Graph Map

8903 records

< 1 - 100 >

Q Search data ...

Go >

Filters

_id	ID	Name	Field2	Year	Session	Page	Date	District	Geo-sub...	Name O...	I
1	2652	Weir, W.		1908	3	573	(May 1907)	Charters...	Charters...	Mills Unit...	
2	2659	Martin, F.		1908	3	574	(May 1907)	Charters...	Charters...	Mills Unit...	
3	2683	Williams,...		1908	3	575	(May 1907)	Charters...	Charters...	Brilliant ...	
4	2778	Morris, E...		1908	3	581	(May 1907)	Charters...	Charters...	Mills Unit...	
5	2750	Bryden, ...		1908	3	579	(Jun 1907)	Charters...	Charters...	Mills Unit...	
6	2779	Taylor, T...		1908	3	581	(Jun 1907)	Charters...	Charters...	Rainbow...	
7	3012	Callama...		1910	3	769	(Apr 1909)	Charters...	Charters...	Queen G...	
8	8423	Mann, H.		1946	2	160	22/05/2012	Charters...	Charters...	Black Jack	



Photographs & Newspapers



- Trove
 - But remember not everything is in Trove!
- State Libraries & Archives
- University Archives
- Historical Societies & Museums
- Flickr

BULLEN.—The Friends of the late Mr. **WILLIAM HENRY BULLEN**, beloved father of Mrs. D. H. Richardson, are respectfully invited to follow his remains to the place of interment, the Anglican Cemetery, Karrakatta.

The Funeral is appointed to leave the residence of his son-in-law, Mr. D. H. Richardson, 21 Woodville-street, North Perth, at 9.45 o'clock **TO-MORROW (Friday) MORNING**, per road. Friends wishing to attend the Funeral may proceed by the 10.30 train leaving Perth.

BOWRA and O'DEA,
Undertakers,
195 Pier-st., Perth. Tel. A4800.

THE LATE MR. WILLIAM HENRY BULLEN.

The funeral of the late Mr. W. H. **Bullen** took place on the 16th ult., in the Karrakatta Cemetery. The deceased gentleman was a native of Ballarat, Victoria, being born there in 1857. He spent 20 years in Queensland in the mining industry, and came to this State just 20 years ago. He was well known in Kanowna in the boom days, and the last few years he had resided in Perth. His wife predeceased him six years ago. He leaves one daughter (Mrs. D. H. Richardson) to mourn her loss. The chief mourners were:—Mrs. D. H. Richardson (daughter), Mr. D. H. Richardson (son-in-law), and Private **Henry** Loudon (nephew). The pall-bearers were:—Messrs. R. F. Hamilton, J. W. Burgess, R. Salter, A. Yeldon, J. Salter, and F. E. Buckingham. Among those present were:—Mesdames C. R. Richardson, L. Spencer, W. Elling, A. Wilson, J. Cassidy, Buckingham, and W. McDonald. The Rev. G. Y. Caton conducted the burial service, and the funeral arrangements were in the hands of Messrs.

KALGOORLIE EPIDEMIC.

Kalgoorlie, Aug. 29.

The influenza epidemic has been responsible for an increased death rate in the ranks of the Miners' Union, no less than 20 members having died within the past month in Kalgoorlie and Boulder district alone. Records show that, since the opening of the isolation hospital on July 5 141 patients have been admitted, of whom 23 have died. Fifty-five remain in hospital. During July and August there were 121 burials in the Kalgoorlie and Boulder cemeteries as compared with 49 for the corresponding period last year, the excess of 72 this year being attributed to the influenza epidemic.

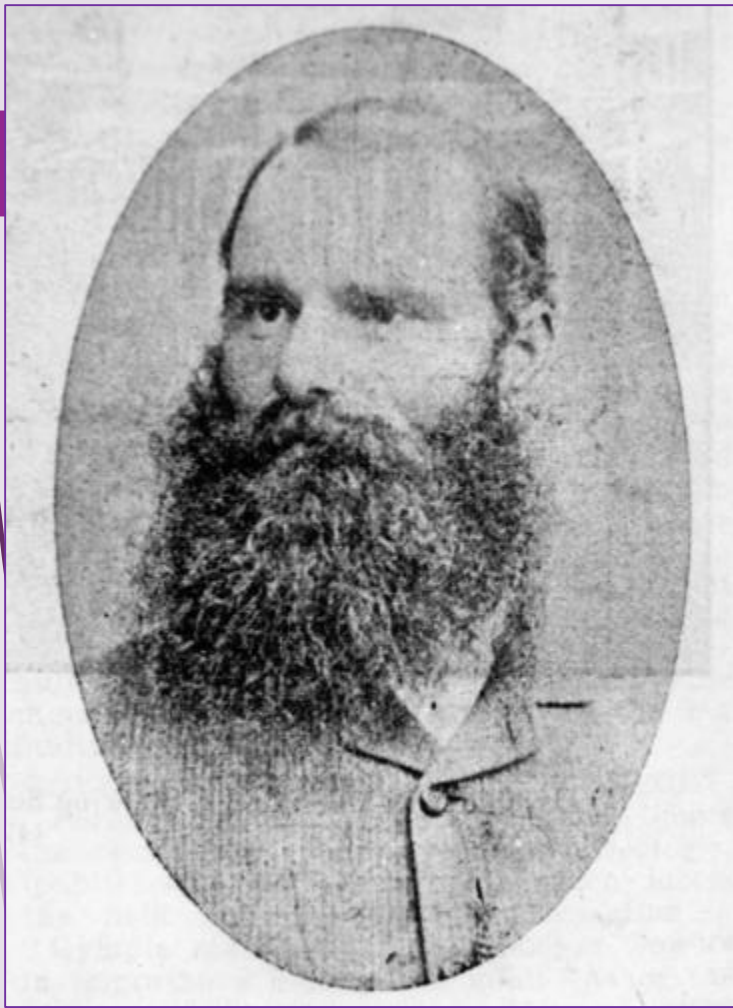
The West Australian (Perth, WA : 1879 - 1954) / Wed 14 Jun 1939

INFLUENZA EPIDEMIC.

Kalgoorlie Hospital Full.

The Kalgoorlie Hospital was full to capacity with patients as a result of the outbreak of influenza, stated a telegram received yesterday by the Commissioner of Public Health (Dr. Everitt Atkinson) from the acting medical officer at the hospital (Dr. Davis). The message added that some of the nurses, who had become ill with influenza, had recovered and were back on duty. The position was well in hand.

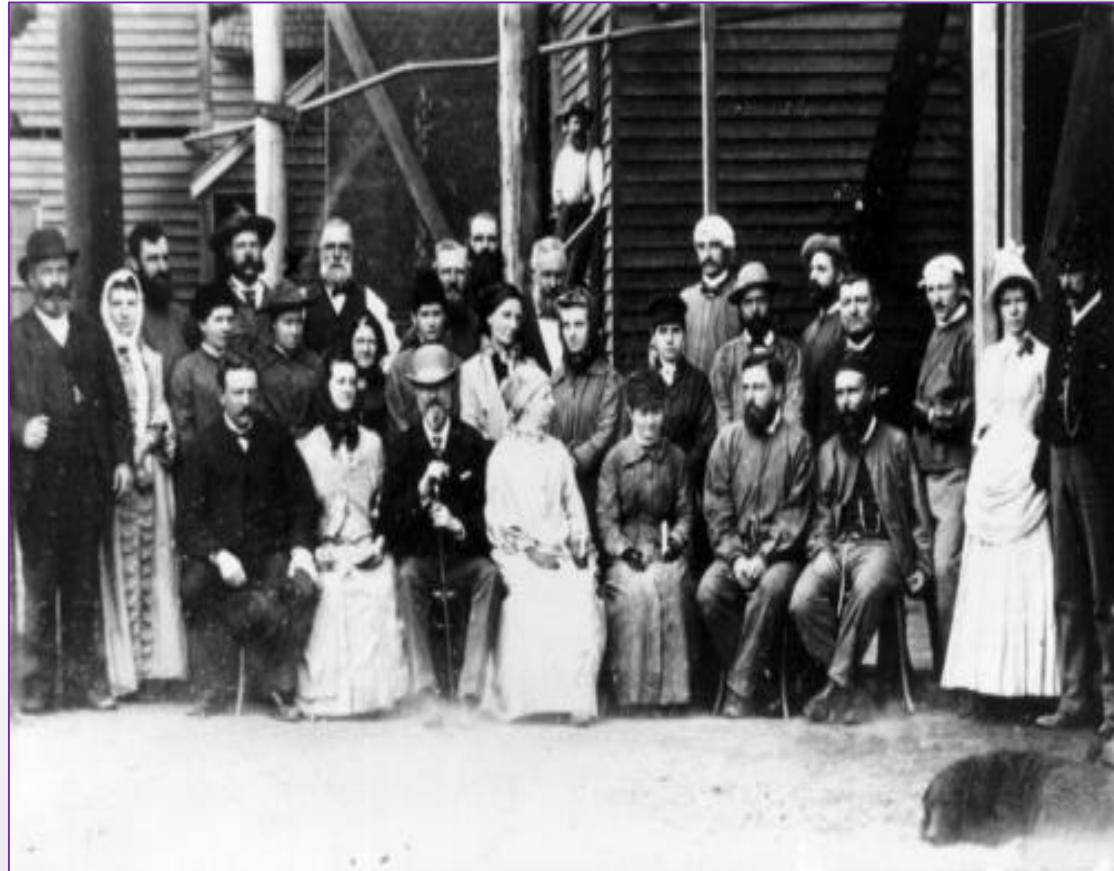
<https://trove.nla.gov.au>



J B Atkinson, Gympie 1897

Images John Oxley Library

Visit of Sir Anthony & Lady Musgrave North
Phoenix Mine Gympie 1888





ca 1899

Summary

A panorama of 'The Golden Mile' Kalgoorlie and Boulder gold mines, miners' housing and commercial areas in the vicinity. Some of the tailings dumps can be seen amongst the buildings. (The panorama has been photographed in three sections, possibly distorting the perspective.) Several businesses can be seen at bottom right area: Parer's & Co., Ivanhoe Hotel (T. Moran), Burke's Perseverance Hotel, [?] & H. Witte Butchers, McCaw Union Boot & Shoe Store, J. Kenny & Co., and Alf Dunstone.

Image courtesy State Library of South Australia

<https://collections.slsa.sa.gov.au/resource/B+69003>

Shauna Hicks Perth Jun 2018



Quart Pot Hotel, Stanthorpe
1872

Image John Oxley Library

Schoolchildren 1873
Stanthorpe State School
Image John Oxley Library





Cradling for gold outside Charters Towers

Shauna Hicks Perth Jun 2018

Image John Oxley Library

★ Favorite

Actions ▾

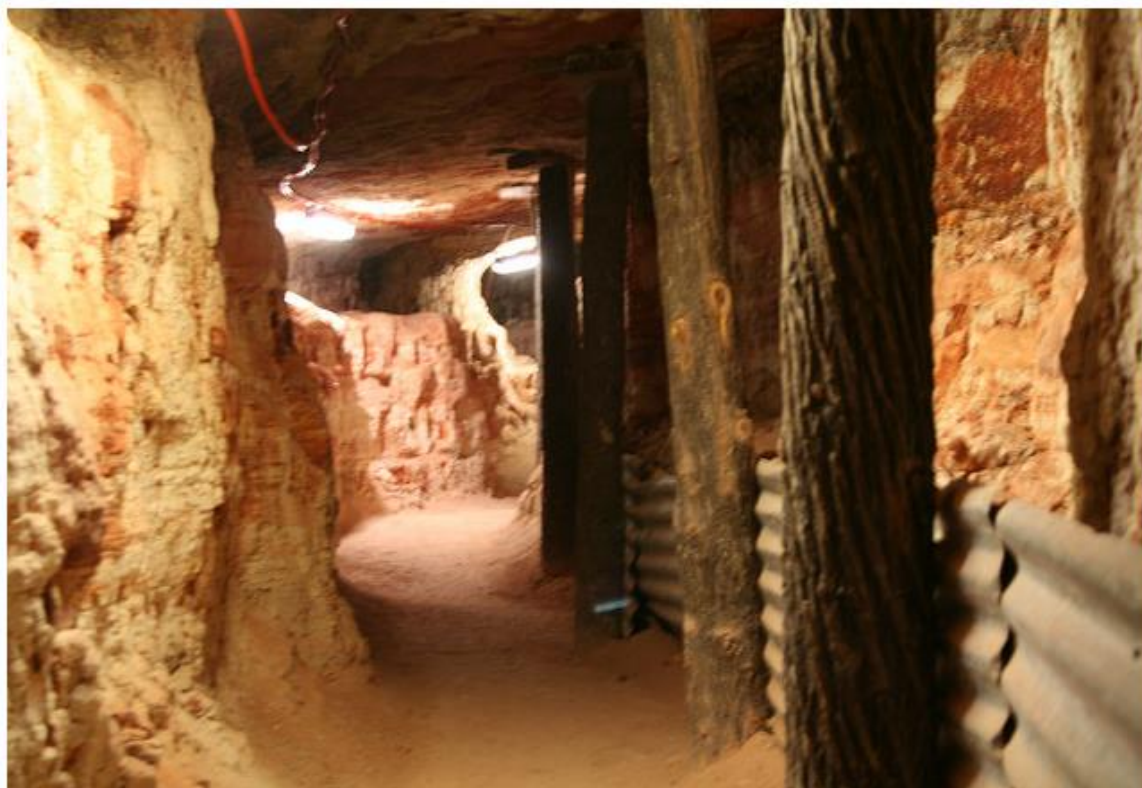


Share ▾

← Newer



Older →



Lightning Ridge - opal mine tunnel

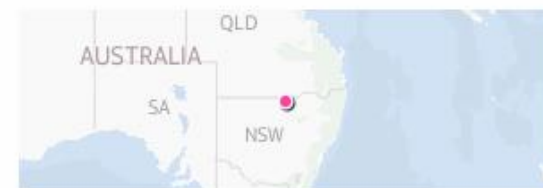
Lightning Ridge is full of small opal mines - people move there, stake a claim and start digging. This mine is no longer active, but open for tourists to explore.

For more info see the [Lightning Ridge](#) entry on the [Big Trip](#) website.

By the_ferret

Jonathan Stilts + Add Contact

This photo was taken on November 1, 2008 in Walgett, New South Wales, AU, using a Canon EOS 350D Digital.



240 views

This photo belongs to

[the_ferret's photostream](#) (1,199)



This photo also appears in

► [Big Trip](#) (set)

► [Big Trip](#) (group)

► [Flickr Australia](#) (group)

Tags



Conclusion



- Follow the gold (remember other minerals too)
- Most records are not indexed
- Not everything has survived
- Look for illustrations
- Have fun & good luck!