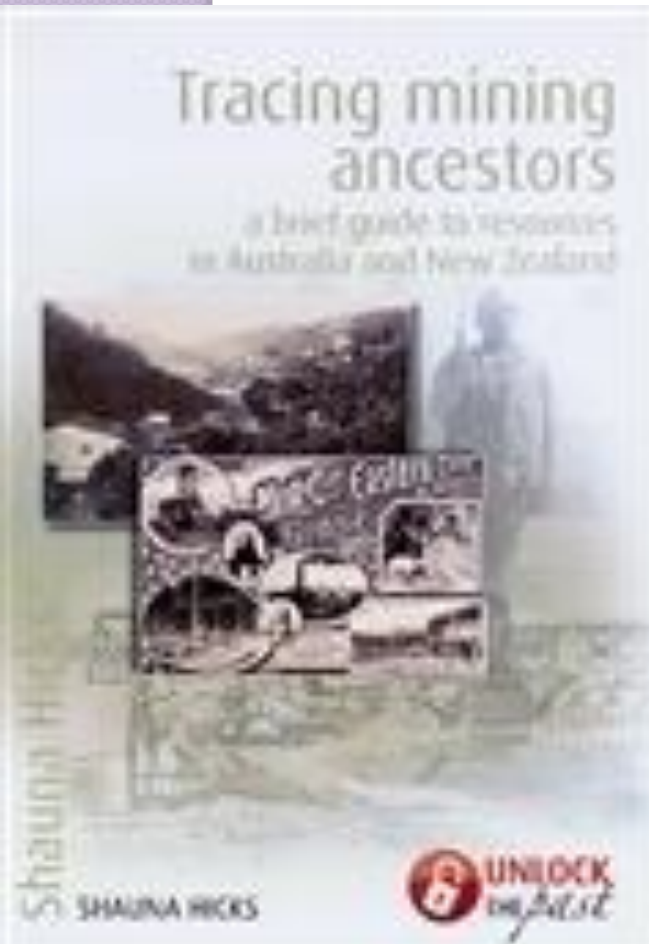


# Mining Ancestors: Where to Look

Shauna Hicks

[www.shaunahicks.com.au](http://www.shaunahicks.com.au)



Shauna Hicks (UTP Feb 2016)

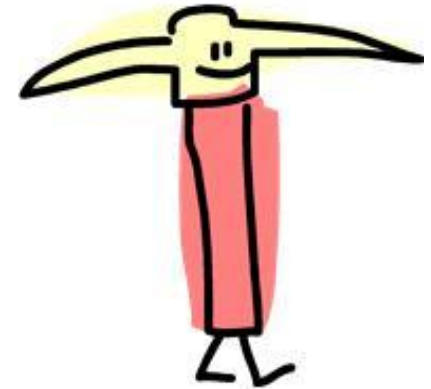


# Introduction

- Background history for context
- Archives & Libraries
- Trade Unions & Company Records
- Historical Societies & Museums
- Miners' Health
- Newspapers & Photographs



# Background History



- Miners moved around

- Major mining rushes (they followed new discoveries)

- South Australia 1840s

- Victoria & NSW 1850s

- Queensland 1860s

- Tasmania 1870s

- Western Australia 1890s



- Don't forget the trans Tasman connection



# Mining in Australia

From Wikipedia, the free encyclopedia

## Or New Zealand



This article's **lead section** may not adequately **summarize** key points of its contents. Please consider expanding the lead to **provide an accessible overview** of all important aspects of the article. Please discuss this issue on the article's **talk page**.

(September 2010)

**Mining in Australia** is a significant **primary industry** and contributor to the **Australian economy**. Historically, mining booms have also encouraged **immigration to Australia**. Many different ores and minerals are mined throughout the country.

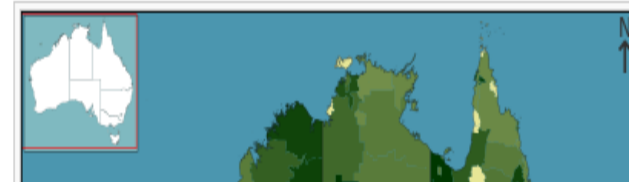
Mining has had a substantial environmental impact in some areas of Australia. Although mining services, equipment and technology are being exported, the mining sector employs 2.2% of the total labour force.

### Contents [hide]

- 1 History
  - 1.1 Gold rushes
- 2 Location
- 3 Minerals and resources
  - 3.1 Coal mining
  - 3.2 Uranium mining
  - 3.3 Natural gas
- 4 Entrepreneurs and magnates
- 5 Economics
- 6 Technology and services
- 7 Lifestyle
- 8 Environment and politics
- 9 Mining Disasters
  - 9.1 New Australian Gold Mine
  - 9.2 Mount Kembla



Super Pit gold mine at Kalgoorlie in Western Australia is Australia's largest open-pit mine



[http://en.wikipedia.org/wiki/Mining\\_in\\_Australia](http://en.wikipedia.org/wiki/Mining_in_Australia)

Shauna Hicks (UTP Feb 2016)



# Tasmania's Mining History: A bibliography

## General

- Anon., 'Mineral rich regions of Australia', Part 1: Tasmania's Mt Read volcanics. Part 2: The Pilbara region of Western Australia: more than iron ore and gas', in *Johnny Green's Journal*, vol. 9, no. 4, April 1989, pp. 15–18, vol. 10, no. 3, January 1990, pp. 6–10.
- Aubrey, Michael, 'A history of mining exploration starts to pay off: Tasmania', in *Miner*, Darlinghurst, NSW, November 1989, pp. 10–11.
- Blainey, Geoffrey, 'The rise and decline of the West Coast', in Tasmanian Historical Research Association, *Papers and Proceedings*, vol. 4, 1960, pp. 66–74.
- Burton, B., 'Undermining Tasmania: a research paper on the mining industry', Wilderness Society, Hobart, 1989.
- Dickens, Greg, *Mining in Tasmania - a brief history*, Tasmania Geological Survey Record 1995/11, Mineral Resources Tasmania, Hobart, 1995.
- Donovan and Associates, *A Mining History of Australia*, Donovan & Associates History and Historic Preservation Consultants, Blackwood, SA, 1995.
- Fenton, James, *A History of Tasmania from its Discovery in 1642 to the Present Time*, J. Walch and Sons, Hobart, 1884.
- Gaughwin, Denise, 'Trade, Capital and the Development of the Extractive Industries of Northeast Tasmania', in *Australasian Historical Archaeology* 10, 1992 [published 1994], pp. 55–64.
- Hills, Loftus, 'The progress of Geological Research in Tasmania Since 1902', in *Proceedings of the Royal Society of Tasmania*, 1921, pp. 111–146.
- Hogg, E.G., 'The Magnetic Survey of Tasmania', *Proceedings of the Royal Society of Tasmania*, vol. 117, 1983, pp. 81–88.

## *Bibliography of Australian Mining History*

**Minerals**

**Copper**

**Gold**

**Iron**

**Silver and Lead**

## **Tin**

- Anon., 'Tin mining at Mount Cleveland', in *Australian Trader*, vol. 7, September 1970, p. 55.
- Blackaby, Narelle, *Rossarden, Echo of the Mountain*, self-published, Canberra, 2004.
- Cochrane, G.W., *Tin deposits of Victoria*, Bulletin of the Geological Survey of Victoria, no. 60, Department of Mines, Melbourne, 1971.
- Crowther, Edward Lodewyk, *Journal of Prospecting in Gould's Country, N.E. Tasmania, 1875-76*, 19?

[www.mininghistory.asn.au](http://www.mininghistory.asn.au)



## Historical resources

▼ [Heritage maps](#)

▼ [Minerals industry historic photo collection](#)

▼ [Heritage primefacts](#)

The department has a number of resources that provide historical information on Minerals & Petroleum activities in NSW.

### Heritage maps

The department's collection of heritage geological maps is in the process of being catalogued, conserved, scanned and archived. In the future high quality copies of these maps will also be available for purchase.

A unique collection of geologically notated parish maps is also being captured and a small sample is provided.

◊ [Heritage maps](#)

### Minerals industry historic photo collection

NSW Department of Primary Industries holds a significant heritage collection of images documenting the activities of the department of mineral resources and the mining industry from the late 1800s to the present.

The images range across geological localities, geologists and other staff at work, mining localities, specimens from the economic rock & mineral collection, micrographs and illustrations used in technical presentations.

The collection is housed in the department's Minerals Division office in Maitland in the Hunter Valley of NSW.

With a prior appointment, researchers may conduct their own search of this collection on-site. DPI staff may also carry out searches at a cost of of \$30 per hour or part thereof for this service.



Fire investigation team wearing Proto breathing apparatus at the C.S.A. Mine near Cobar in 1920. L to R, A. J. Julius - Mine manager, Gwyder Whalen - surveyor & Bob Pivetta - underground foreman.

[www.resources.nsw.gov.au/historical](http://www.resources.nsw.gov.au/historical)



Search Trove

[Search Help](#)

[Home](#)  
[About PANDORA](#)  
[Blog](#)  
[Partners](#)  
[Notification form](#)  
[Services](#)  
[Statistics](#)  
[User survey](#)  
[Contact us](#)  
[Other archives](#)  
[Disclaimer](#)  
[NLA home page](#)

[Home](#) < [Historic gold mining sites - Australian Internet Sites](#)

## Gippsland region

- [Historic gold mining sites in the Kilmore - Yea region of Victoria](#)
- [Historic gold mining sites in the St Andrews mining division](#)
- [Historic mining sites in the Gippsland mining district](#)

## North East Victoria

- [Historic gold mining sites in the north east region](#)

## North West Victoria

- [Adelaide New Moon Mine site](#)
- [Armstrong Gully alluvial sinkings](#)
- [Cambrian Reef](#)
- [Carman's tunnel : great international mine](#)
- [Eaglehawk Union Co.](#)
- [Fryer's Co. mine](#)
- [German Gully](#)
- [Golden Gully alluvial workings](#)
- [Historic gold mining sites in Amherst Mining](#)
- [Historic mining sites in the Heathcote \(Waranga South\) mining division](#)
- [Historic mining sites in the Inglewood, Wedderburn and St Arnaud mining division](#)
- [Historic mining sites in the Maldon mining division](#)

- [Historic mining sites in the Maryborough and Avoca mining divisions : part 2 : site gazetteer](#)
- [Historic mining sites in the Rushworth-Waranga north mining division](#)
- [Leviathan Reef](#)
- [Lightning Hill](#)
- [Lord Nelson Company, St Arnaud](#)
- [McIntyre sites](#)
- [New Chum goldfields mine sites](#)
- [Old Havelock Company](#)
- [Oswalds estimates mine](#)
- [Raywood Reservoir](#)
- [Redcastle Creek cyanide works](#)
- [Sebastopol Reef sites](#)
- [Tappit Hen mine and Tamagulla railway station](#)
- [Tamagulla state battery](#)

## South West Victoria

- [Historic gold mining sites in Hepburn mining division](#)
- [Historic gold mining sites in the south west region of Victoria](#)
- [Quartz Reef Mine and shallow alluvial sinkings](#)

<http://pandora.nla.gov.au/col/13023>

- 1851:** Gold officially discovered at Livingstone Creek, Omeo, by men employed by Edward Crooke, licensee of Hinnu Mungey station, about 10 miles below Omeo - small rush followed - about 100 - worked with shovel and tin dish - almost abandoned mid-1852. Area prospected as far as Cobungra station. Among early parties was Hedley. (Flett, p. 169)
- 1852:** Gold found at Bindi on Tambo River. (Flett, pp. 171-2)
- 1854:** Early in year, 50 miners at Omeo, surfacing and sluicing - later that year, 180 men 'between Mt Livingstone and the Swamp', working in creek or on eastern bank terraces. (Flett, p. 170)
- 1854-6:** Mining camp called Omeo - became a town in 1856. (Flett, pp. 170-71)
- 1855-7:** First in series of long sluicing races constructed - Champagne and Co. (Frenchmen) built theirs early in 1855 - they were original party to work the area now known as the Oriental claims. Fitzgerald and party commenced cutting races, which delivered water to Bloomfield's Gully, and (later) Pioneer claims.<sup>1</sup>
- 1856-7:** Gold found in tributaries of Livingstone Creek - Dry Creek and New Rush Creek opened, 1857. (Flett, p. 170).
- 1856+:** The alluvial deposits in the Dry Gully area (now loosely grouped as the Oriental claims) 'are over one hundred feet thick in parts [and] apparently occupy the bed of an ancient tarn or mountain lake, and are auriferous for almost the complete depth...'<sup>2</sup>
- 1857-60s:** Fitzgerald and party took up claims on hill at junction of Livingstone Creek with Dry Gully and Mountain Creek in 1857 - working ground as Pioneer claim, ground sluicing, in 1858. Pioneer and French parties competed for water rights - Fitzgerald took up agricultural ground around Dry Hill and west of Livingstone Creek - restricted others from building water rights around his ground.<sup>3</sup>
- 1863-4:** Township and Pioneer reefs opened up. (Flett, p. 171)
- June 1864:** 425 alluvial miners (275 Chinese, 150 Europeans) - no quartz miners. Population focused on Livingstone Creek (265) and Mitta-mitta River, from Cobungra to Wombat Creek (120) - 20 at Tambo River and Swift's Creek, 15 at Wombat Creek. Chinese population does little mining in winter months - cannot endure the cold at Omeo.

## BEECHWORTH GOLDFIELD

- | DATE            | HISTORY:   |
|-----------------|--|
| <b>1852:</b>    | First discovery on present site of Beechworth, February 1852. <sup>1</sup>   |
| <b>1853:</b>    | Woolshed (part of Reedy Creek, about 6 km below Beechworth) opened 1853 - extraordinarily rich by 1855 - township extended for 2_ miles, but almost deserted within a few years. <sup>2</sup>  |
| <b>1855:</b>    | Discoveries of new fields at Eldorado in 1855 and Wooragee (Magpie Creek), north of Beechworth, in 1856. <sup>3</sup>  |
| <b>1856:</b>    | Small party cut a tail-race from the Spring Creek falls up to the alluvial flats on Spring Creek, east of Beechworth, then virtually abandoned, 1856 (future Rocky Mountain Co. claim) - had been held in very small claims and worked by sinking and driving, then tub-and-cradled - tail-race 20 chains long, blasted 2-8 ft deep through rock - took 18 months to complete, cost £3,000 - not deep enough to drain deepest ground - much gold left behind. <sup>4</sup> |
| <b>1859:</b>    | Spring Creek, 1859 - called Spring Creek above the Upper Falls and Woolshed Creek below the Lower Falls - originally worked in paddocks - slabs and bark used to prevent sides falling in - then worked over again with sluice-boxes - now being worked for third time, by improved sluicing methods. <sup>5</sup>   |
| <b>1860:</b>    | 2,310 European miners, 2,139 Chinese <sup>6</sup> - Upper Three-Mile Creek worked since 1852 - now chiefly taken up by Chinese, sluicing (likewise Lower Three-Mile/Bowman's). <sup>7</sup>  |
| <b>1861:</b>    | Battery of 16-head, 15-hp steam engine erected at Two-Mile Reef, 1861. <sup>8</sup><br><ul style="list-style-type: none"> <li>The 'great' Excelsior tail-race, Reid's Creek, being extended by blasting through tough granite, 15 ft deep, 1861.<sup>9</sup></li> </ul>  |
| <b>1861:</b>    | Bawden's (or Rawden's) Steam Co., Woolshed, 1861 - 'have given up the system they first adopted, of ground sluicing their claim, and in consequence of having little or no fall to work upon, lifting up the tailings and water by buckets on an endless band of vulcanised India rubber some 15 ft and discharging it over the bank into the creek; they now only lift the water and bank up the tailings as well as they can.' <sup>10</sup>                             |
| <b>1861:</b>    | German and Durham crushing machine, 2-Mile Creek, 1861 - 12-head, 12-16 hp engine. <sup>11</sup>   |
| <b>1861-62:</b> | European miners leaving for the Lachlan and New Zealand, 1861-2 - Chinese taking over ground. <sup>12</sup>  |





# CORNISH ASSOCIATION OF VICTORIA



- Home -

[Home](#) [About us](#) [Association Events](#) [News](#) [Activity Groups](#) [Branches](#) [Library & Research](#) [Photo Galleries](#) [Links](#)

## Quick Links

### [CAV 30th Anniversary 2016](#)

For Program and Booking  
Form follow the link above

### [Trip to Tarndwarncourt](#)

### [Watch the Communion at St Piran's Oratory 23/11/2014](#)

### [Tribute to Bill Phillips](#)

### [Bendigo Group Re- established](#)

### [Library & Research Centre Hours](#)

### [Library & Research Centre Catalogue](#)

### [Latest News](#)

## Welcome to the "Home Page" of the Cornish Association of Victoria Inc, Australia.

Browse the menus above and enjoy all we have to offer. If you live in Victoria, Australia you might like to join our vibrant Association. We meet at the **Oakleigh Baptist Church Hall**, which is situated at the corner of **Warrigal Road and Moorookyle Ave, Oakleigh**. (Melway Ref. Map 69 E10).

For all enquiries contact the Secretary: [Miss June Whiffin](#),

Monthly meetings are held the 3rd Saturday, between 1.30 pm and 4.30 pm. February to November and the 2nd Saturday of December.

Library and Research facilities are also situated at the Church Hall, and are open on the 2nd Tuesday, the 3rd Saturday and 4th Monday of each month from 10.30 am to 2 pm (except January).

Take a look at the menus above and there is sure to be information and/or images of interest.

## Coming Dates in 2015

Details of [forthcoming speakers](#) and events

**Ballarat Branch:** Meets on the 1st Saturday of  
EVEN months at 3.30pm. The venue is the Skipton  
Street Uniting Church Hall corner Skipton & Darling



[www.cornishvic.org.au](http://www.cornishvic.org.au)

Shauna Hicks (UTP Feb 2016)



# HISTORY - HANES



Home Culture History Language Music Myth Politics Religion What's on

*'The splendour of the history of Wales is that, unlike most other countries, the tradition of the nation has persisted through thousands of years.'* \*



The Welsh have been involved in the development of Australia from the earliest days of European settlement. Their impact has been notable in a number of key areas of Australian life -- especially in the mining industry -- but has always been limited by their relatively small numbers. It has also been obscured by the long-held but misleading view that, with the exception of the Irish, all British people who have settled in Australia have been culturally homogeneous. Although overwhelmingly Protestant and, since the sixteenth century, politically and economically integrated with England, the Welsh have brought to Australia a distinctive cultural identity' - A. Ffestin Hughes



Original Southern Cross  
from the Eureka Stockade

The  
Birthplace of  
Australian  
Democracy



**IN AUSTRALIA**

**IN AUSTRALIA**

## A New Nation is Born

Sir

**SAMUEL WALKER GRIFFITH** (1845-1920); chief justice and premier, was born at Merthyr Tydfil, Glamorganshire, Wales, second son of Rev. Edward Griffith, Independent minister, and his wife Mary. He travelled extensively in many countries of the world and made a name as a brilliant young barrister. He strove to protect aborigines, fought for free, secular compulsory education and spearheaded the legislation of trade unions to improve relations between labour and capital. In 1891 he was given the task of drafting the Constitution for the Commonwealth of

**John Basson Humffray** was born in [Newtown](#), Wales and became active in the [Chartist](#) movement before migrating to Australia.

After campaigning for better rights for the miners on the Victorian goldfields Humffray was elected inaugural President of the [Ballarat Reform League](#) at a monster meeting of over 10,000 diggers at Ballarat in 1854. He met with Governor

<http://web.aanet.com.au/soulpsychology/welshaustralian/Historyindex.htm>



# Archives & Libraries

- State – Fact Sheets, Published Guides, Online Catalogues (inter library loans)
- University
  - Noel Butlin Archives Centre
- Specialist
  - Bendigo Regional Archives Centre



## Mining Records

Queensland State Archives holds an extensive collection of records of the Mining Department and the Mining Warden's Offices throughout the State. These records relate to the development and government administration of the Queensland mining industry since separation. The mining industry has always played a significant role in the Queensland economy and a large proportion of the population of Queensland was employed in the mining industry prior to World War I. Research of mining records is time-consuming because of the large volume of departmental indexes and the fragility of the registers and ledgers. Photocopying of registers is not permitted because of possible damage to the original binding. Some early press copy letterbooks are too fragile to be released and are therefore closed to public access.

There are separate series of records for the three types of mining - gold, coal and base metals - as specified in the Mining Act and the Coal Mining Act. Mining records are accessioned under the general headings:-

**MINES DEPARTMENT**  
**GOLD COMMISSIONER** (before 1874)  
**MINERAL LANDS COMMISSIONER** (1872 - 1898)  
**MINING WARDEN** (from 1874)  
**INSPECTOR OF MINES**  
**MINING REGISTRAR AND ASSISTANT MINING REGISTRAR**

## Miners' Homestead Leases

### Brief Guide 48

*The Gold Fields Homestead Act* of 1870 encouraged gold miners and others to become permanent residents on the gold fields of Queensland. From 1 March 1871 it repealed the *Gold Fields Towns Lands Act* of 1869 and enabled any holder of a miner's right, business license or gold mining lease (or any other authorised adult resident) to make application for a lease of land on a proclaimed gold field. The applicant must have been resident on the field for not less than six months and the application had to be lodged at the office of the Commissioner in charge of the gold field. The area applied for was not to exceed 40 acres. An Application Book was to be kept at the office of the Gold Commissioner on every proclaimed gold field. The number of applicants was restricted to one hundred on each field and leases were transferable. Any miner with a valid miner's right was able to search for gold on the land.

An amendment to the Act in 1880 enabled any holder of a miner's right to apply for a lease not exceeding a quarter of an acre within the limits of a township for residence or business purposes. This amendment also directed that all rents and revenue from the leases be paid to a special fund to be expended on roads, bridges and other public works on the respective goldfields under the superintendence of the relevant local authority.

*The Gold Fields Homestead Leases Act* of 1886 repealed the previous acts. It changed the areas of proposed leases: leases could be up to half an acre within township limits, five acres within two miles of the town boundaries and forty acres beyond two miles.

*The Mineral Homestead Leases Act* of 1891 authorised the issue of Homestead Leases in Mining Districts (i.e. for mining other than gold), on terms which were the same as for the Gold Fields Homestead Leases.



## Index to Mineral Leases 1871-1940

This Index was created from several series of records created by the Mines Department and the Mining Warden, Cloncurry. The majority of these records are the printed lease documents with identifying information completed by hand.

### Background

1. **Series ID 18221 (MIN/N1-48), Gold mining leases** dated 1/8/1871 - 31/7/1919. Details given include name(s) of applicant(s) for lease, where they were from, yearly rent payable, Act under which lease was granted, where the lease was situated (name of goldfield), area of land, term (in years) and date of commencement of lease, minimum number of miners to be employed, county and parish, description and sketch map of boundaries of lease, transfers (date and to whom).
2. **Series ID18222 (MIN/O1-56), Mineral leases** dated 21 Jan 1884 - 11 Oct 1940. Details given include name(s) of applicant(s) for lease, where they were from, mineral sought, yearly rent payable, district where the lease was situated, area of land, term (in years) and date of commencement of lease, description and sketch map of boundaries of lease, transfers (date and to whom).
3. **Series ID 7367 (A/20586), Index to Coal Mining Licence Register under the Act of 1886** dated 12/1/1888 - 23/7/1954. This record is an Index to coal mining licence register under the Minerals Lands (Coal Mining) Act of 1886. Details include licence number, name and folio number. Folio numbers from 299 - 590 provide access to **Series ID 17138 (B1265), Register of Coal Prospecting Licences** dated 12/1/1888 - 23/7/1959. [Please note this item (B/1265) is not included in the Mineral Leases 1871-1940 Index].
4. **Series ID 9132 (A/45843), Mineral and Water Race Leases** dated 16/9/1910 - 30/11/1933. Details given include name of mineral field, county and parish, locality area, date of lease, names of lessees and details of transfers.

[www.archives.qld.gov.au](http://www.archives.qld.gov.au)



Name of Company	Date of Registration	File No.	Book	Registration Year	Companies Office
Lady Ann P C United Gold Mining Company Ltd	19/05/1888	84	5		
Lady Augusta Gold Mining Company Ltd	22/05/1888	89	5		
Lady Carrington Gold Mines Limited	18/04/1898	75	9		
Lady Don Gold Mining Company Ltd	21/12/1883	233	2		
Lady Eleanor Gold Mining Company Ltd	08/06/1886	270	3		
Lady Flora & Doctor's Extended Gold Mining Company Ltd	18/03/1884	265	2		
Lady Florence Extended Gold Mining Company Ltd	23/02/1888	41	5		
Lady Florence G M Co Ltd	10/04/1895	299	7		
Lady Florence No 1 West Gold Mining Company Limited	05/08/1895	43	8		
Lady Franklin Gold Mining Company Ltd	25/09/1885	181	3		
Lady Helena G M Co Ltd	26/08/1889	298	5		
Lady Isabelle and Content United G M Co Ltd	21/01/1892	295	6		
Lady Isabelle Block G M Co Ltd	25/09/1891	220	6		
Lady Isabelle Limited	25/10/1895	77	8		
Lady Isabelles No 2 & 3 South United G M Co Ltd	07/06/1892	32	7		
Lady Jane Gold Mining Company Limited	16/08/1886	291	3		
Lady Lamington Gold Mining Company (No Liability)	10/06/1896	141	8		
Lady Lamington Gold Mining Company Limited	31/07/1899	256	9		
Lady Margaret Extended G M Co (No Liability)	01/12/1891	268	6		
Lady Margaret G M Co Ltd	11/09/1891	216	6		
Lady Maria Extended G M Co Ltd	05/11/1891	248	6		
Lady Maria Gold Mining Company Limited	26/05/1885	122	3		
Lady Maria Gold Mining Company Ltd	16/06/1882	97	2		
Lady Marici Gold Mining Company Limited	16/06/1882	97	2		
Lady Mary 1 & 2 South Gold Mining Company Ltd	09/01/1888	300	4		
Lady Mary and New Zealand G M Co Ltd	10/08/1893	140	7		
Lady Mary Company (No Liability)	02/09/1907	135	1	1907	Townsville
Lady Mary Gold Mining Company Boonoo Boonoo Ltd	16/11/1887	254	4		
Lady Mary Gold Mining Company Limited	27/11/1894	258	7		
Lady Mary Gold Mining Company Limited	15/09/1902	32	11		
Lady Mary Gold Mining Company Ltd	10/10/1872	94	1		

[www.archives.qld.gov.au](http://www.archives.qld.gov.au)





Search

Order Records

e-Newsletter

Open Hours

Contact Us

Home

About Us

Visit Us

Collections

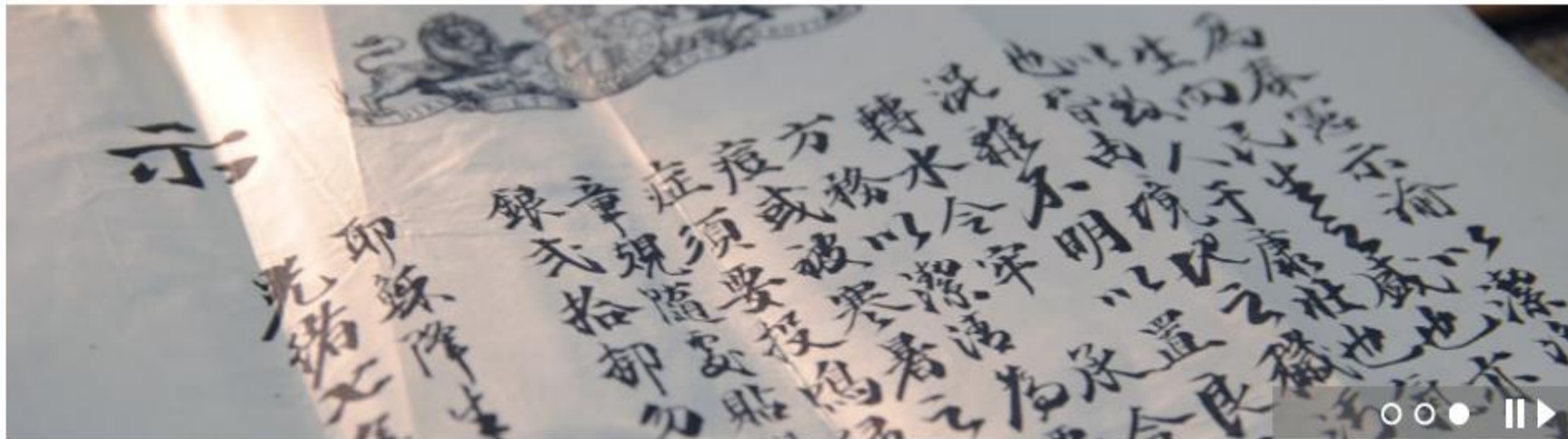
Family & Local History

Guides & FAQs

What's On

Digital Records

Home







## ARCHIVES

[Home](#)[Noel Butlin Archives Centre](#) »[University Archives](#) »[Pacific Research Archives](#) »[National AIDS Archive  
Collection](#)[Using the Archives](#)[News](#) »[Exhibitions](#) »[Annual Lectures](#)[Publications](#)[Friends of the Noel Butlin  
Archives Centre](#)[Frequently asked questions](#)[Links](#)[Contact us](#)[University Records](#)[ANU Library](#)Treasures of the Noel Butlin  
Archives Centre

The Noel Butlin Archives Centre holds many treasures among its twenty kilometres of records and some of these are recognised by listing on the UNESCO Australian Memory of the World Register.

[» read more](#)

The ANU Archives collects and preserves the University's own archives, the Pacific Research Archives, the National AIDS Archive Collection and the Noel Butlin Archives Centre. These records are available for all researchers not just ANU staff and students.

## Search the Archives collection

[Search](#)

Search results will appear in a new browser window. The [database](#) includes information about all deposits and series, the organisations and people who created them, and 55% of lists of items as at October 2015. The [Help](#) page gives more information about how to use the database.





## ANU ARCHIVES PROGRAM

Noel Butlin Archives Centre

Telephone: +61 2 6125 2219

Email: [butlinarchives@anu.edu.au](mailto:butlinarchives@anu.edu.au)

[www.archives.anu.edu.au](http://www.archives.anu.edu.au)

[www.archives.anu.edu.au](http://www.archives.anu.edu.au)

## RECORDS ABOUT GOLD MINING

### COMPANY RECORDS

The Noel Butlin Archives Centre holds records of a number of companies involved in gold mining. Some examples of company records are:

#### Adelaide Steamship Company Ltd

Outwards Correspondence relating to private freighting accounts & syndicates of J Turnbull (Secretary and General Manager), 1888-1892 (N46/566)

#### Australian Agricultural Company

Letters to General Superintendent regarding potential gold deposits, 1853-1856 (1/46/1)

Mineral prospecting papers including letters, tracings and reports in connection with prospecting in the Port Stephens district, 1855-1904 (1/64/4)

#### Clarke and Co (Melbourne)

Company, 1932 (67/72)

Correspondence of TM Owen regarding Wiluna Gold Mines Ltd, WA, 1927-1932 (67/71)

Correspondence of TM Owen regarding Reef Gold Mine, Gundagai, 1932 (67/66)

Correspondence of TM Owen regarding Occidental Gold Mines NL, 1932-1933 (67/62)

Correspondence of TM Owen regarding Main Ridge Gold Mine, 1932 (67/58)

#### Peel River Land and Mineral Company

Despatches from the early years of the company documenting initial success in the search for gold followed by the decline in value to the company. They include monthly reports of gold licences issued.

### UNION AND ORGANISATION RECORDS

The records of many unions and organisations include files about gold miners. The items listed below are just a sample.

#### Australian Workers Union (Head Office)

Industrial Court Transcripts Gold and Metalliferous Mining Industry, 1917 (N117/622-624)

Minutes of the Amalgamated Miners Association, Wrightville, Ganbelego Branch. Includes minutes of the Truckers & Boodlers of Mt Boppy Goldmine, 1910 (N117/1467)

#### Federated Engine Drivers' and Fireman's Association of Australia (Federal Council)

Tasmanian Goldmines, transcript of proceedings in the Commonwealth Conciliation and Arbitration Court, 1913 (T56/3/4-5)

#### Federated Engine Drivers' and Fireman's Association of Australia (NSW Branch)

Demarcation dispute with AWU over gold mining, 1983-1989 (N129/528-530)

Holdway-McMahon - Mt Carrington Goldmines (Drake Operation), 1988 (N129/1182)

Fitzherbert, PB, *The crisis: New Zealand's future depends upon your vote* Wellington, New Zealand, 1931 (Gold Standard) (P5/1/375)

Fitzherbert, PS, *The dawn of the new outlook* Wellington, NZ, 1931 (P5/1/376)

Mining Act, also amending Acts with Regulations thereunder, 9th edition, Sydney Government Printer, 1894 (P5/1/887)

Moloney, Dan, *The history of Addson's Flat goldfields* Westport, New Zealand, Westport News, 1923 (P5/1/818)

#### Miscellaneous Pamphlet Collection

*From Tent to Parliament: the life of Peter Lalor and his coadjutors, and history of the Eureka Stockade Ballarat*, 1934 (P56/253/22)

Lenin, VI *The Importance of Gold Now and After the Victory of Socialism*, Sydney, Modern Publishers Pty Ltd, first published in USSR Nov 1921 (P56/250/54)

**Australian Agricultural Company, London**  
*Guide to the Northern Gold Fields by an Old Bushman*, Sydney, Woolcott & Clarke, 1856 (78/1/25)

mining and history



SLQ collections + eresources



Search

Refine your search:

Books



that contain my query words



anywhere in the record



rss

☆ [Add page to Store](#)

## Expand My Results



Include resources with no full text

## Show only

[On shelf](#) (631)

[Online resources](#) (300)

## Refine my results

### Subject

[Gold Mines And Mining](#)  
[Mines And Mineral Resources](#)  
[Coal Mines And Mining](#)  
[Australia](#)  
[Mineral Industries](#)

[Show 29 more](#) ▾

[More options](#) ▾

### Resource type

[Books](#)  
[Other](#)

Results 1 - 20 of 1,048 for SLQ collections + eresources

Sorted by: [Relevance](#) ▾

1 2 3 4 5 ➔

Show only [On shelf](#) (631) | [Online resources](#) (300)



- ☆ [No two the same : an autobiographical, social and mining history 1914-1992 on the life and times of a mining engineer / A.A.C. \(Bert\) Mason](#)  
 A. A. C. Mason (Albert Arthur Charles), 1914- : Australasian Institute of Mining and Metallurgy  
 Parkville, Vic : Australasian Institute of Mining and Metallurgy | 1994  
 ● **Available:** In storage. Request then collect from level 3 (CHG 622.092 mas 1994 ).

[Locations/Request](#) [Details](#) [Save/Share/Comment/Tag](#) [Virtual shelf](#)

Book



- ☆ [A bibliography of Australian mining history / compiled by Mel Davies](#)  
 Mel Davies ; Australian Mining History Association; University of Western Australia. Department of Economics.  
 Nedlands, W.A. : Dept. of Economics, University of Western Australia | 1997  
 ● **Available:** Open Access, level 2 (G 016.6220994 1997 ).

[Locations/Request](#) [Details](#) [Save/Share/Comment/Tag](#) [Virtual shelf](#)

Book



- [The rush that never ended : a history of Australian mining / Geoffrey Blainey](#)  
 Geoffrey Blainey 1930-

[View all 5 versions](#)

<http://onsearch.slq.qld.gov.au>

Shauna Hicks (UTP Feb 2016)



[All our websites](#)[Our Catalogue](#)[Go to whole of WA Government search](#)

# Dead Reckoning

How to find your way through the  
genealogical jungle of Western Australia

## Dead Reckoning

[How to Begin](#)[The Battye Library](#)[Books](#)[Serials](#)[Other Material](#)[Private Archives](#)[Indexes and](#)[Catalogues](#)[State Records Office](#)[Archive Accessioning  
Systems](#)[Government Archival  
Records](#)[Other Australian  
States and Overseas](#)[Further Sources](#)[Abbreviations](#)

Share this page



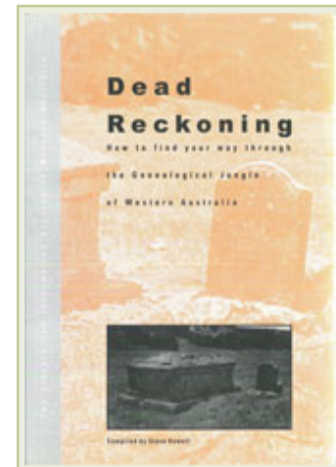
## Dead Reckoning: a guide to family history research in WA

**If you are a novice family historian just starting out tracing your family tree or an experienced genealogy researcher looking for whatever happen to the elusive great uncle. Dead Reckoning is your handbook to family history research in Western Australia.**

**Dead Reckoning: how to find your way through the Genealogical Jungle of Western Australia** (compiled by Steve Howell) was first published in 1997. It was an update of the 1983 Library Board of Western Australia publication: [Tracing your ancestors: a guide to genealogical sources in the J.S. Battye Library of West Australian History](#).

Since 1997, the Battye Library and the State Records Office have received new material of interest to anyone undertaking genealogical and biographical research. As well, many relevant internet resources have been developed. Following a grant from the Sholl Bequest (administered by the Friends of Battye Library Inc.), it was decided to revise and publish the book online, so it can be regularly updated as appropriate resources and material are found.

The online publication is divided into various sections. The first section covers how to begin, legal deposit, copyright,



[www.slwa.wa.gov.au/dead\\_reckoning](http://www.slwa.wa.gov.au/dead_reckoning)







Search for ...

[All our websites](#)

[Our Catalogue](#)

[Go to whole of WA Government search](#)

# Dead Reckoning

How to find your way through the  
genealogical jungle of Western Australia

## Indexes and Catalogues: A- M

[Arrivals](#)

[Biographical](#)

[Births, Baptisms,  
Deaths, Burials &  
Marriages](#)

[Cemeteries](#)

[Colonial Secretary's  
Office](#)

[Correspondence](#)

[Convicts](#)

[Inquests](#)

[Land Owners](#)


[Members Interests  
Directories](#)

[Military](#)

[Mining Lease Holders](#)

[Dead Reckoning](#) > [Indexes and Catalogues](#) > [A-M](#) > [Mining Lease Holders](#)

Share this page [f](#) [t](#) [i](#) [s](#)

 [printer friendly](#)

## Mining Lease Holders

[Mining lease holders names 1 January 1892 to 31 December 1909 \[microform\].](#)

Bayswater, W.A. : Western Australian Genealogical Society, [1996].  
[929.39 MIN]

This is a microfiche index of mining lease holders 1892-1909. It has been taken from a Mines Department Nominal Index to Mining Tenements ([CONS 4603/6 - Record Series 1028](#)) and provides the name of the lease holder, lease number, goldfield and date of lease holding.

Page last updated: Tuesday 23 November 2010

[www.slwa.wa.gov.au/dead\\_reckoning/indexes\\_and\\_catalogues/a-f2/mining\\_lease\\_holders](http://www.slwa.wa.gov.au/dead_reckoning/indexes_and_catalogues/a-f2/mining_lease_holders)





# Trade Unions & Company Records

- Miners often belonged to a union
- Membership records may be useful
- Mining not always solitary pursuit
- Companies may be worth looking at – especially shareholders



[Home](#)[About](#)[Search](#)[Browse](#)

## Welcome to the Australian Trade Union Archives

A gateway for researchers and scholars of labour history

- [Find people](#)
- [Find trade unions](#)
- [Find peak union bodies](#)
- [Find employer bodies](#)
- [Find government agencies](#)
- [Find publications](#)

**Search**

GO

e.g. name of organisation, person.

→ [Advanced search](#)

## Parties to the Award



### [Parties to the Award](#)

A Guide to the pedigrees and archival resources of Federally registered trade unions, employer associations and their peak councils in Australia 1904-1994.

## Timeline



### [Timeline](#)

A timeline relating to labour history in Australia 1788-2001.

[www.atua.org.au](http://www.atua.org.au)



## Search results for: mining

178 results found.

18 pages of results.

1. [Construction Forestry Mining & Energy Union \(i\) - Trade Union entry - Australian Trade Union Archives](#)

... O P Q R S T U V W Y Trade Union entry Construction Forestry Mining & Energy Union (i) (1992- 1993) CFMEU Chart 7 ...

Terms matched: 1 - 8 Nov 2010 - URL: <http://www.atua.org.au/biogs/ALE0383b.htm>

2. [Construction Forestry Mining & Energy Union \(ii\) - Trade Union entry - Australian Trade Union Archives](#)

... O P Q R S T U V W Y Trade Union entry Construction Forestry Mining & Energy Union (ii) (1993-) CFMEU Chart 7: ...

Terms matched: 1 - 8 Nov 2010 - URL: <http://www.atua.org.au/biogs/ALE0384b.htm>

3. [Construction Forestry & Mining Employees Union - Trade Union entry - Australian Trade Union Archives](#)

... P Q R S T U V W Y Trade Union entry Construction Forestry & Mining Employees Union (1992) Chart 7: Trade Unions- Building, Construction ...

Terms matched: 1 - 8 Nov 2010 - URL: <http://www.atua.org.au/biogs/ALE0385b.htm>

4. [Federated Mining Mechanics Association of Australasia - Trade Union entry - Australian Trade Union Archives](#)

... N O P Q R S T U V W Y Trade Union entry Federated Mining Mechanics Association of Australasia (1929- 1990) Chart 7: Trade Unions ...

Terms matched: 1 - 8 Nov 2010 - URL: <http://www.atua.org.au/biogs/ALE0427b.htm>

5. [Australasian Coal & Shale Employees Federation - Trade Union entry - Australian Trade Union Archives](#)

... 1990) Miners' Federation Chart 7: Trade Unions- Building, Construction, Mining and Timber Industries Details From 1916 To 1990 Functions Trade Union (Federal) ...

Terms matched: 1 - 8 Nov 2010 - URL: <http://www.atua.org.au/biogs/ALE0103b.htm>

6. [Federated Mining Employees Association of Australia \(i\) - Trade Union entry - Australian Trade Union Archives](#)

... N O P Q R S T U V W Y Trade Union entry Federated Mining Employees Association of Australia (i) (1912- 1914) Chart 22 ...

Terms matched: 1 - 8 Nov 2010 - URL: <http://www.atua.org.au/biogs/ALE0425b.htm>

7. [Amalgamated Mining Employees Association of Victoria & Tasmania - Trade Union entry - Australian Trade Union Archives](#)

... N O P Q R S T U V W Y Trade Union entry Amalgamated Mining Employees Association of Victoria & Tasmania (1912) Chart 22: Trade Unions ...

Terms matched: 1 - 8 Nov 2010 - URL: <http://www.atua.org.au/biogs/ALE0039b.htm>



# Australasian Coal & Shale Employees Federation (1916 - 1990)

Miners' Federation

**From** 1916  
**To** 1990  
**Functions** Trade Union (Federal)  
**Reference No** 087V

## Summary

Registered federally in 1913 as the Australasian Coal Miners' Association this union was buoyed significantly in 1914 by the inclusion of members from the defunct Victorian Coal Miners' Association. In 1916 the Australasian Coal Miners' Association changed its name to the Australasian Coal & Shale Employees' Federation which operated until 1990 when it amalgamated with the of Australasia to form the United Mineworkers' Federation of Australia. BWIU Amalgamated Union in 1992 and later that year with the Federation of Australasia and the Operative Plasterers' & Plaster Workers the formation initially of the Construction Forestry & Mining Employees Forestry Mining & Energy Union. This union was reregistered as the Union in 1993 following amalgamations with the Federated Furnishings Operative Painters' & Decorators' Union of Australia.

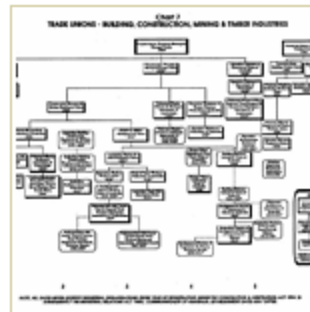


Chart 7: Trade Unions - Building, Construction, Mining and Timber Industries

## Timeline

? - 1874 Sandhurst Miners Association

? - 1874 Buninyong Miners Association

? - 1874 Blackwood Miners Association

? - 1874 Clunes Miners Association

? - 1874 St Arnaud Miners Association

? - 1874 Malmsbury Miners Association

? - 1874 Stawell Miners Association

? - 1874 Maldon Miners Association

? - 1874 Haddon Miners Association

1870s - c. 1883 Creswick Miners Association

1874 - c. 1884 Amalgamated Miners Association of Victoria

1907 - 1914 Victorian Coal Miners Association

c. 1884 - 1916 Amalgamated Miners Association of Australasia

1913 - 1916 Australasian Coal Miners Association

**1916 - 1990 Australasian Coal & Shale Employees Federation**

1990 - 1992 United Mineworkers Federation of Australia

1992 Construction Forestry & Mining Employees Union

1992 - 1993 Construction Forestry Mining & Energy Union (i)

1993 - Construction Forestry Mining & Energy Union (ii)

[www.atua.org.au](http://www.atua.org.au)



## Browse Entries

[A](#) [B](#) [C](#) [D](#) [E](#) [F](#) [G](#) [H](#) [I](#) [J](#)  
[K](#) [L](#) [M](#) [N](#) [O](#) [P](#) [Q](#) [R](#) [S](#) [T](#)  
[U](#) [V](#) [W](#) [Y](#)

---

## SELECTED EVENTS IN TRADE UNION HISTORY

# Wonthaggi Coal Strike (1934)

**From** 1934  
**To** 1934  
**Functions** Strike

## Summary

In response to depression-era setbacks, miners at the Wonthaggi State Coal Mine go on strike. After five months the Menzies government eventually succumbs to the Miners' Federation's demands and in so doing, helps to pave the way for the gradual nationwide restoration of conditions and wages lost during the years of the depression.

---

## Skip to

↓ [Published Resources](#)

---

## Published resources

### Journal Articles

- Cochrane, P., 'The Wonthaggi Coal Strike, 1934', *Labour History*, vol. 27, Australian Society for the Study of Labour History, Sydney, 1974, pp. 12-30. ▶ [Details](#)

[www.atua.org.au](http://www.atua.org.au)



# Historical Societies & Museums

- Google search
- Also try genealogy & family history societies
- Private individuals
  - The Goldminer's Database (NZ)



All Images Maps News Videos More ▾ Search tools

About 321,000 results (0.83 seconds)

✓ **Copperfield - Central Queensland Family History ... - Sites**  
<https://sites.google.com/site/cqfamilyhistory/articles-indexes/.../copperfield>  
 In 1880 the following description of Copperfield was given In the Queensland P Office Directory; A mining township, four miles distant from Clermont. Owing to ...

✓ **Clermont and Copperfield | Queensland Places**  
[queenslandplaces.com.au/clermont-and-copperfield](http://queenslandplaces.com.au/clermont-and-copperfield) ▾  
 Clermont, a former mining town, is 320 km west of Rockhampton and 100 km north of Emerald. It was apparently named after Clermont, France, a name possibly ...

✓ **Copperfields Mine - Wikipedia, the free encyclopedia**  
[https://en.wikipedia.org/wiki/Copperfields\\_Mine](https://en.wikipedia.org/wiki/Copperfields_Mine) ▾  
 Copperfields Mine, originally known as Temagami Mine, is an abandoned copper-silver mine on Temagami Island in Lake Temagami, Ontario, Canada.

✓ **Clermont Histroy | Zamia**  
[www.zamia.com.au/projects/clermont-history](http://www.zamia.com.au/projects/clermont-history) ▾  
 Clermont has a rich mining history and as the first inland settlement in the tropics one of the most historic ... Copper mine at Copperfield, Queensland, ca. 1910

✓ **Copperfield - Outback Now**  
[www.outbacknow.com.au](http://www.outbacknow.com.au) ▾ ... ▾ Capricorn/Burnett ▾ Clermont ▾  
 Copperfield can be found in Clermont, Capricorn/Burnett, Queensland. ... The Copperfield township and the copper mine is testimony to the changing ...

All Maps News Images Videos More ▾ Search tools

About 39,900 results (0.67 seconds)

✓ **Map of Copperfield Mine in Queensland - Bonzle Digital ...**  
[www.bonzle.com](http://www.bonzle.com) ▾ home ▾ mines

The Copperfield Mine is a mine just off the Clermont Rubyvale Road in south Queensland, Australia situated about 750km northwest of Brisbane (show me).

✓ **Clermont and Copperfield | Queensland Places**  
[queenslandplaces.com.au/clermont-and-copperfield](http://queenslandplaces.com.au/clermont-and-copperfield) ▾  
 Clermont, a former mining town, is 320 km west of Rockhampton and 100 km north of Emerald. It was apparently named after Clermont, France, a name possibly ...

✓ **Copperfield - Central Queensland Family History ... - Sites**  
<https://sites.google.com/site/cqfamilyhistory/articles-indexes/.../copperfield>  
 In 1880 the following description of Copperfield was given In the Queensland P Office Directory; A mining township, four miles distant from Clermont. Owing to ...

✓ **Copperfield - Outback Now**  
[www.outbacknow.com.au](http://www.outbacknow.com.au) ▾ ... ▾ Capricorn/Burnett ▾ Clermont ▾  
 It was the start of Queensland's first copper mine and it continued its operation until the best quality ore was mined out in the 1880s. The site of the Copperfield ...

✓ **Copperfield Store, Chimney and Cemetery, Clermont ...**  
[www.mackayregion.com/.../copperfield-store-chimney-and-cemetery](http://www.mackayregion.com/.../copperfield-store-chimney-and-cemetery) ▾  
 Copperfield Store, Chimney and Cemetery: In 1861 copper was discovered four miles south-west of Clermont and Queensland's first copper mine, Peak Downs ...





Sovereign Hill

Gold Museum

Accommodation

Sound & Light Show

Education

Narmbool

Costumed School

SOVEREIGN HILL  
*it's pure gold!*

## IN THIS SECTION

○ What to See and do

○ About Us

● Membership

○ Media Information

○ Visitor Services

For more information, please call 03 5337 1100

N

ENTRANCE

Main Street

Main Street

Please click here to download full map



[www.sovereignhill.com.au](http://www.sovereignhill.com.au)



# **LIGHTNING RIDGE AUSTRALIA**

## **Lightning Ridge Historical Information**

[Main Page](#)[Request Information](#)[Disclaimer](#)[Search This Site](#)[Main Page](#)[Main Page](#)[Contacts](#)[1900-1910 Text](#)[1911-1920 Text](#)[1921-1939 Text](#)[1940-1970 Text](#)[1971-2000 Text](#)[2000+ Text](#)[Pictures 1900-1920](#)[Pictures 1921-1930](#)[Pictures 1931-1950](#)[Pictures 1960s](#)[Pictures 1970s](#)[Early Camp Pictures](#)

The Historical Society was formed in 1982 to protect an abandoned miner's hut in the main street of Lightning Ridge. Western Lands declared the block a Crown Reserve, Historical Reserve No. 96499. Today, the hut is maintained as a token to the old timers, and open for inspection most days to locals and visitors

Occupied for forty years by Sid and George Graham, who extended their endless "verandah hospitality", the hut was built in 1932 by Albert Spicer when he struck opal. His son Mal still visits the Ridge and has presented the Society with original photos of his father and their camp at the 3 Mile.

Known today as Heritage Cottage, the hut offers tourist information and select handcrafted items are for sale in an historical setting. The bark dividing walls, dirt floors and kerosene tin chimney are typical of early Ridge architecture. The original wood stove may belt out heat, sending up whiffs of smoke, on a cold winter's morn!



[www.wj.com.au/lrhistory/index.html](http://www.wj.com.au/lrhistory/index.html)

Shauna Hicks (UTP Feb 2016)





# GOLDRUSH ONLINE

HOME

JOURNAL

LINKS



## THE GOLDMINER'S DATABASE

Search the names of 50000 goldminers from the goldrushes of New Zealand  
Spanning the years 1861 - 1872

New Search

e.g. BROWN, John

☐ Exact match

☒ Wild card

Search

## RECORDS INCLUDED IN THE GOLDMINER'S DATABASE

[Otago Mining Records \(1861 - 1866\)](#)

[Thames Mining Records \(1867 - 1872\)](#)

[Explanation of the Record Types in the Database \(First column in the results chart\).](#)

[Notes on the Thames Goldfields and searching the Database.](#)

[Miner's Rights in Thames.](#)

[The Major Goldrushes of the 1800s.](#)

[www.kaelewis.com](http://www.kaelewis.com)

Shauna Hicks (UTP Feb 2016)





## HOSPITAL SERIES

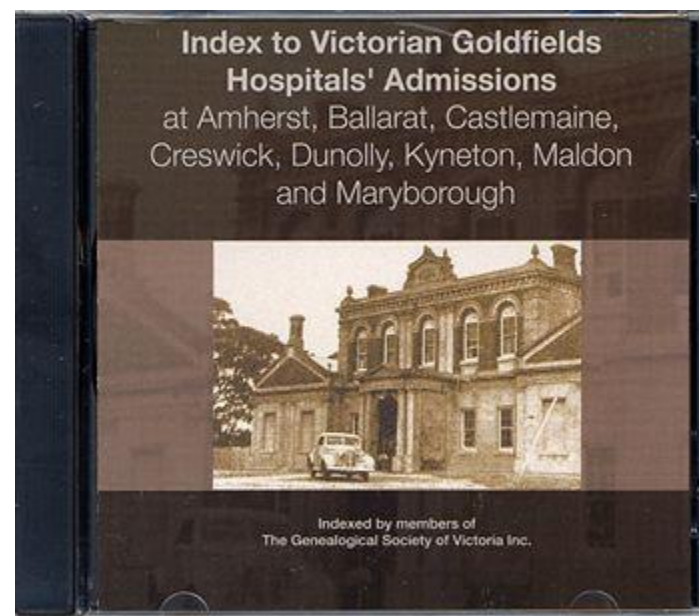
The Victorian Goldfields Hospitals Index: The Hospitals and the Information the Records Contain.

The CD is an amalgamation of indexes to records of the following eight hospitals. They are all admission records, except that which we have called the Kyneton Hospital Family record:

Amherst Hospital 1869-1888  
Ballarat Hospital 1856-1913  
Castlemaine Hospital 1855-1920  
Castlemaine Benevolent Asylum 1860-1922  
Creswick Hospital 1863-1882  
Creswick Hospital outpatients 1873-1877  
Creswick Hospital 1883-1894  
Dunolly Hospital 1860-1900  
Kyneton Hospital Admissions Register 1862-1885  
Kyneton Hospital Family Record 1869-1884  
Maldon Hospital 1864-1905  
Maryborough Hospital 1855-1907

The index comprises ten fields of information: surname; given name(s); admission date; age of patient; patient's place of birth; whether single, married or widowed; occupation; residence; and source.

Various additional information is contained in the records.



## GSV @ Home

Learn what YOU can access from Home

Download and view the relevant files below

[www.gsv.org.au](http://www.gsv.org.au)

- [Genealogical Index of Names \(GIN\)](#)
  - Search approximately 4 million entries mainly relating to Victoria. Entries may include a digital image

# Miners' Health



- A dangerous occupation
- Accidents (minor, fatalities, disasters)
- Miners phthisis
  - **Anthracosis** \An`thra\*co"sis\, n. (Med.) A chronic lung disease, common among coal miners, due to the inhalation of coal dust; -- called also collier's lung and miner's phthisis.



Series ID	Item ID	Record Type / Description / Departmental Numbers	Start Date	End Date	Digital Images
18309	1028277	<u>Batch file, railway</u>  Miners Phthisis Claim - Alexander Hay  35-217	11/12/1934	11/3/1935	<input type="checkbox"/>
6232	963715	<u>Correspondence</u>  Notice of Question - Miners Phthisis Fund  78/1856	30/5/1978	31/12/1978	<input type="checkbox"/>
7645	275105	<u>Correspondence, mines</u>  Miners phthisis: 1967L; 676L 5 Jan 1910; 676L 26 Jan 1910; 1048L 11 Feb 1910; 1461L 2 Mar 1910; 596L 25 Jan 1910; 877L 4 Feb 1910; 1241L 19 Feb 1910; 639L 27 Jan 1910; 640L 27 Jan 1910; 1220L 21 Feb 1910, cont.	1/1/1910	31/12/1910	<input type="checkbox"/>
14812	86596	<u>Correspondence, police</u>  Miners Phthisis  M1426	1/1/1917	31/12/1917	<input type="checkbox"/>
12353	8881	<u>Register - admissions, hospital</u>  Register of admissions and discharges or deaths at Diamantina Hospital (may be indigents and miners' phthisis cases since included in register of allowances to these recipients of government relief)  2 - 341	1/1/1902	31/12/1907	<input type="checkbox"/>
6303	971253	<u>Register - correspondence, inwards</u>  Treasury Department - Card register of letters received: Stamp duty	1/1/1978	31/12/1978	<input type="checkbox"/>

[www.archivessearch.qld.gov.au](http://www.archivessearch.qld.gov.au)





**Diseased and healthy lung (1st of 2)**

Compare these sections cut from a diseased lung with large cavities (left) and a pink, healthy lung (right). The diseased lung shows a case of miner's phthisis (also known as silicosis) which has led to tuberculosis. Quartz dust is inhaled by miners, and trapped in the lungs causes silicosis making the victim more susceptible to diseases such as tuberculosis and pneumonia.

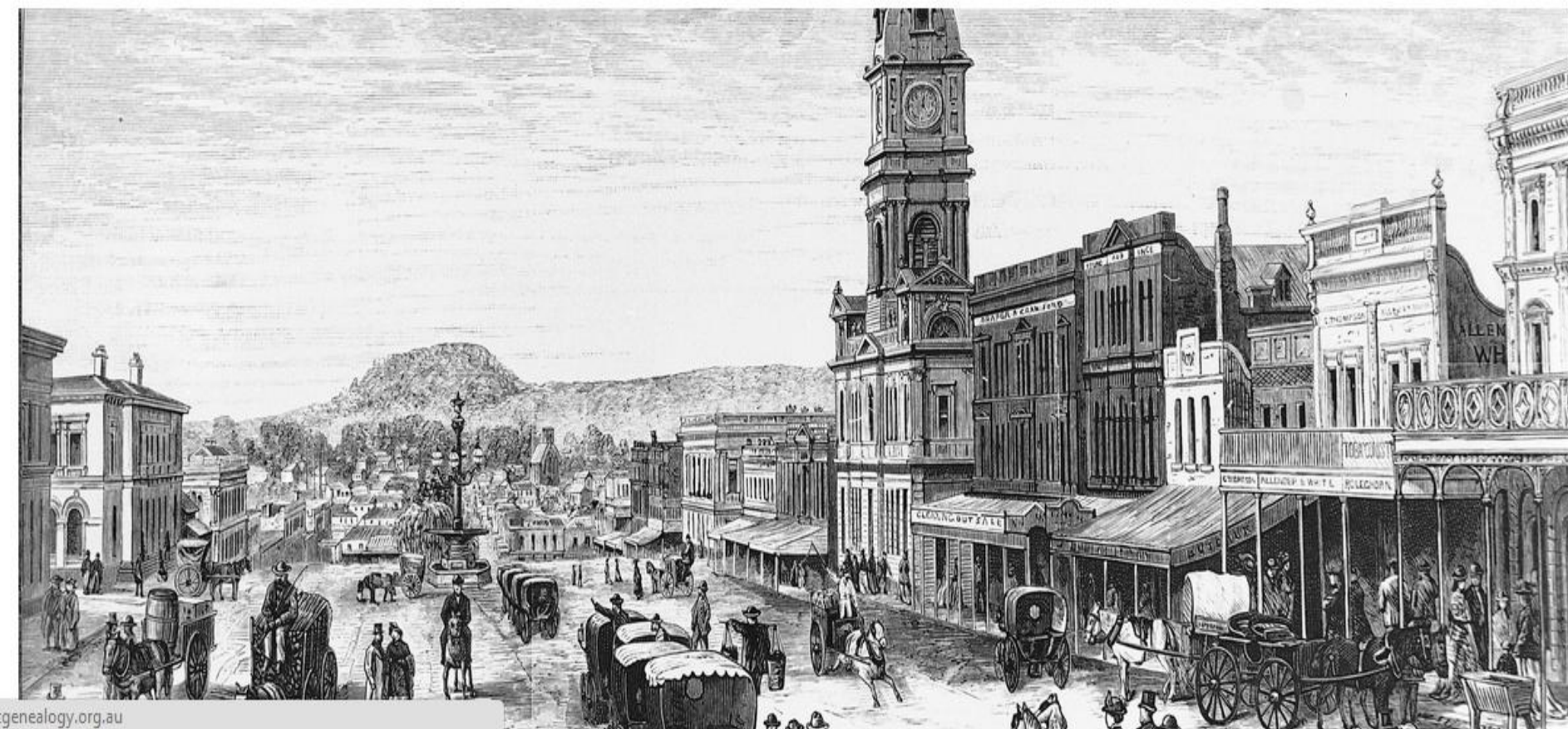
[www.teara.govt.nz/en/gold-and-gold-mining](http://www.teara.govt.nz/en/gold-and-gold-mining)





[HOME](#)[ABOUT](#)[BALLARAT HISTORY](#)[RESEARCH](#)[RESOURCES](#)[CONTACT US](#)

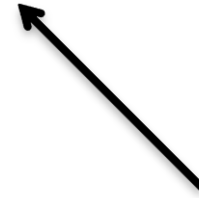
# Ballarat & District Genealogical Society Inc



genealogy.org.au

[www.ballaratgenealogy.org.au](http://www.ballaratgenealogy.org.au)

Shauna Hicks (UTP Feb 2016)

[HOME](#)[ABOUT](#)[BALLARAT HISTORY](#)[RESEARCH](#)[RESOURCES](#)[CONTACT US](#)[HOME](#) | [RESOURCES](#) | [VICTORIAN MINING ACCIDENT INDEX](#)

## VICTORIAN MINING ACCIDENT INDEX

Victorian Mining Accidents Index (1850s-1940s) compiled by Dave Evans (2001 sample)

To purchase the more comprehensive index with more than 9100 names on CD (2006) please email [devans11@optusnet.com](mailto:devans11@optusnet.com)

Peer-categories: [VICTORIAN MINING ACCIDENT INDEX](#) [1891 WOMEN'S SUFFRAGE PETITION](#) [SURNAMEs](#)

[All](#) [A](#) [B](#) [C](#) [D](#) [E](#) [F](#) [G](#) [H](#) [I](#) [J](#) [K](#) [L](#) [M](#) [N](#) [O](#) [P](#) [Q](#) [R](#) [S](#) [T](#) [U](#) [V](#) [W](#) [X](#) [Y](#) [Z](#)

[www.ballaratgenealogy.org.au/resources/  
victorian-mining-accident-index](http://www.ballaratgenealogy.org.au/resources/victorian-mining-accident-index)



Name	Date	K/I/O	Status	Dep	Comments	District	Division	Source
Abernethy, Walter Thos.	1918/04/13	Killed			Injury in mine			(Dig. Evans)
Absalom, William J.	1855/08/13	Killed	28 Y. O.			Sandhurst	Argus Gully	(E.P.)
Ack, Hip	1884/11/25	Killed	Single			Sandhurst	Heathcote	(C.I.R.)
Ack, Yum	1876/10/09	Killed	Single			Ballarat	Smythesdale	(C.I.R.)
Ackley, James	1887/11/08	Injured	Married, 46 Y. O.			Maryborough	Dunolly	(A.R.Sec.Mines)
Adam, Richard	1868/10/10	Killed			Date reported	Ballarat	Springdallah	Dickers M. R.
Adami, Johannes	1864/00/00	Killed	Engine driver, 35 Y. O.		Fall into shaft		Rocky Lead	(Dig. Evans)
Adams,	1868/09/07	Killed			Golden Horn	Ballarat		(C.C.A.)
Adams, Alfred	1921/02/20	Injured			Coal Mine	Ballarat	Lal Lal	(B.C.)
Adams, Andrew	1870/01/04	Injured			Date reported		Garden Gully	Dickers M. R.
Adams, Arthur	1907/00/00	Killed				Ballarat	Berringa	(A.R.Sec.Mines)
Adams, Henry	1890/04/02	Injured				Gippsland	Russell's Creek	(A.R.Sec.Mines)

[www.ballaratgenealogy.org.au/resources/victorian-mining-accident-index](http://www.ballaratgenealogy.org.au/resources/victorian-mining-accident-index)

Shauna Hicks (UTP Feb 2016)



## Queensland mining accidents

Download a printable version of [Queensland mining accidents \[PDF 256 KB\]](#)

Queensland mining accidents were published annually in the *Queensland Legislative Assembly Votes and Proceedings* (later known as Queensland Parliamentary Papers) from 1882 to 1945.

### Queensland Mining Accidents Index

A searchable online index of Queensland mining accidents up to 1945 is now available in One Search.




Join us

Become an SLQ member now to  
access our services, collections and

[www.slq.qld.gov.au/resources/family-history/mining-accidents](http://www.slq.qld.gov.au/resources/family-history/mining-accidents)



[Select databases](#) [New search](#) [Advanced search](#) [Browse](#) [Tags](#)[Store](#) [My account](#) [You are not logged in](#) [Login](#)  
henry goding

SLQ collections + eresources



Search

Refine your search:

All items

that contain my query words

anywhere in the record



rss

[Add page to Store](#)**Expand My Results**

Include resources with no full text

Results 1 - 20 of 297 for SLQ collections + eresources

Sorted by: Relevance

1 2 3 4 5

Show only [On shelf](#) (31) | [Online resources](#) (265) | [Peer-reviewed journals \(online\)](#) (165)[Henry Goding, involved in a mining accident in Queensland.](#)  
Queensland. Legislative Assembly. [Check Details](#)[Details](#) [Save/Share/Comment/Tag](#)**Henry Goding, involved in a mining accident in Queensland.**

Queensland. Legislative Assembly.

[Check Details](#)[Details](#) [Save/Share/Comment/Tag](#)**Title:** Henry Goding, involved in a mining accident in Queensland.**Author/Creator:** Queensland. Legislative Assembly.**Subjects:** [Goding, Henry](#);  
[Mine accidents -- Queensland](#);  
[Miners -- Queensland](#);  
[Charters Towers \(Qld.\)](#)**Coverage:** -20.081004 146.271715**Summary:** In the period 1882 to 1946, Queensland mining accidents were listed annually in the Queensland Legislative Assembly Votes & Proceedings. This record provides details of one reported accident.**Language:** English**Notes:** Accident details as reported: Killed. Passing stopes after the shots had been lighted, one exploded and the dislodged stone fell on him

Reported in Queensland Legislative Assembly Votes &amp; Proceedings, 1899, Session 3, page 419.

Accident at Band of Hope mine in the mining district of Charters Towers.

Nature of injuries: Crushed fatally

**Record number:** 21126923160002061**Link to this record:** [http://onesearch.slq.qld.gov.au/SLQ:SLQ\\_PCI\\_EBSCO:slq\\_alma21126923160002061](http://onesearch.slq.qld.gov.au/SLQ:SLQ_PCI_EBSCO:slq_alma21126923160002061)

# Photographs & Newspapers

- Trove
  - But remember not everything is in Trove!
- State Libraries & Archives
- University Archives
- Historical Societies & Museums
- Flickr



### IN MEMORIAM.

PRICE—In sad and loving Memory of my dearly beloved husband, **Thomas Price**, accidentally killed at Bal-lara on June 16th, 1918.

Oh, for the touch of a vanished hand,  
And the sound of a voice that is still

(Inserted by his sorrowing Wife,  
**Elizabeth Price**)

PRICE—In loving Memory of our dear father and grandpa, **Thomas Price**, accidentally killed at Bal-lara on June 16th, 1918.

(Inserted by his loving Son and Daughter-in-law, **George and Mag-gie Price**, and Granddaughter, **Thelma**)

Townsville Daily Bulletin (Qld. : 1885 - 1954) (about) ◀ Wednesday 16 June 1920 ▶

**John Trevaskis** has been killed in the monkey shaft of the Day Dawn Gold Mine at Charters Towers (Q.), through a truck being accidentally pushed into the shaft. It fell upon Trevaskis who was 50ft below.

Western Champion (Parkes, NSW : 1898 - 1934) (about) ◀ Friday 26 January 1906 ▶

### FATAL MINING ACCIDENT.

**CHARTERS TOWERS, Jan. 18.**—**John Trevaskis** was killed in the monkey shaft of the Day Dawn Gold Mines to-day. A braccman accidentally pushed a truck into the shaft, and it fell on Trevaskis, who was 50ft. below, and killed him.

The Brisbane Courier (Qld. : 1864 - 1933) (about) ◀ Friday 19 January 1906 ▶

### KILLED IN A SHAFT.

Brisbane, Saturday.

**John Trevaskis** was killed yesterday in Monkey shaft on the Day Dawn mine, Charters Towers. The brace-man accidentally pushed a truck into the shaft, and it fell on Trevaskis, 50ft. below.

Barrier Miner (Broken Hill, NSW : 1888 - 1954) (about) ◀ Saturday 20 January 1906 ▶



# NEW GYMPIE MINES

## Company Registered

### SECRETARY RETICENT

The registration of the New Gympie Mines, Ltd., owners of a promising mine in the Wowan district, was finalised on Saturday morning. Favourable reports from the mine and a visit of three directors of the company to Gympie last week are believed to have been responsible for this action being taken.

When questioned on the matter on Saturday morning, Mr. R. E. Hartley, secretary of the company, said he had no statement to make other than that the company had been registered. He also admitted that he had despatched a telegram to all syndicate shareholders, reading: "Important developments. Company registered. Advise declining all offers our syndicate shares."

The New Gympie, which was formerly known as the Kewpie, is situated off Pheasant Creek, about 15 miles from Wowan. The company holds a mining lease of 60 acres.

Last year a crushing from the mine gave a return of over 4 ozs. to the ton. An enlargement of the company followed, and this year the working staff was increased from one to four under Mr. W. Rowe as working manager. Further developments are expected shortly.

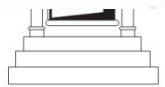
The shareholders in the company are William Rowe, Denis Bill, Charles H. Murphy, John Joseph Booker, M. Roxburgh, F. Kelly, H. T. French, J. T. M'Mullep, D. P. Carey, L. T. Palmer, R. E. Hartley, E. M. Hockings.

Morning Bulletin (Rockhampton, Qld. : 1878 - 1954) (about) ◀ Monday 3 August 1931 ▶

## NEW COMPANY.

Potters Mine, N.L.; registered February 9; capital £12,000 in £1 shares. Subscribers, A. W. E. Weaver, E. R. ter, H. Burton, W. Felton, J. L. Purves, J. Ryan and C. I. Watt; manager Percy G. Pring. Registered office, Equitable Buildings, George-st. Place of operations, near Condobolin. This is one of the best paying concerns in the Condobolin district, and for many years was worked by Mr. Potter privately.

Leader (Orange, NSW : 1912 - 1922) (about) ◀ Thursday 18 February 1915 ▶

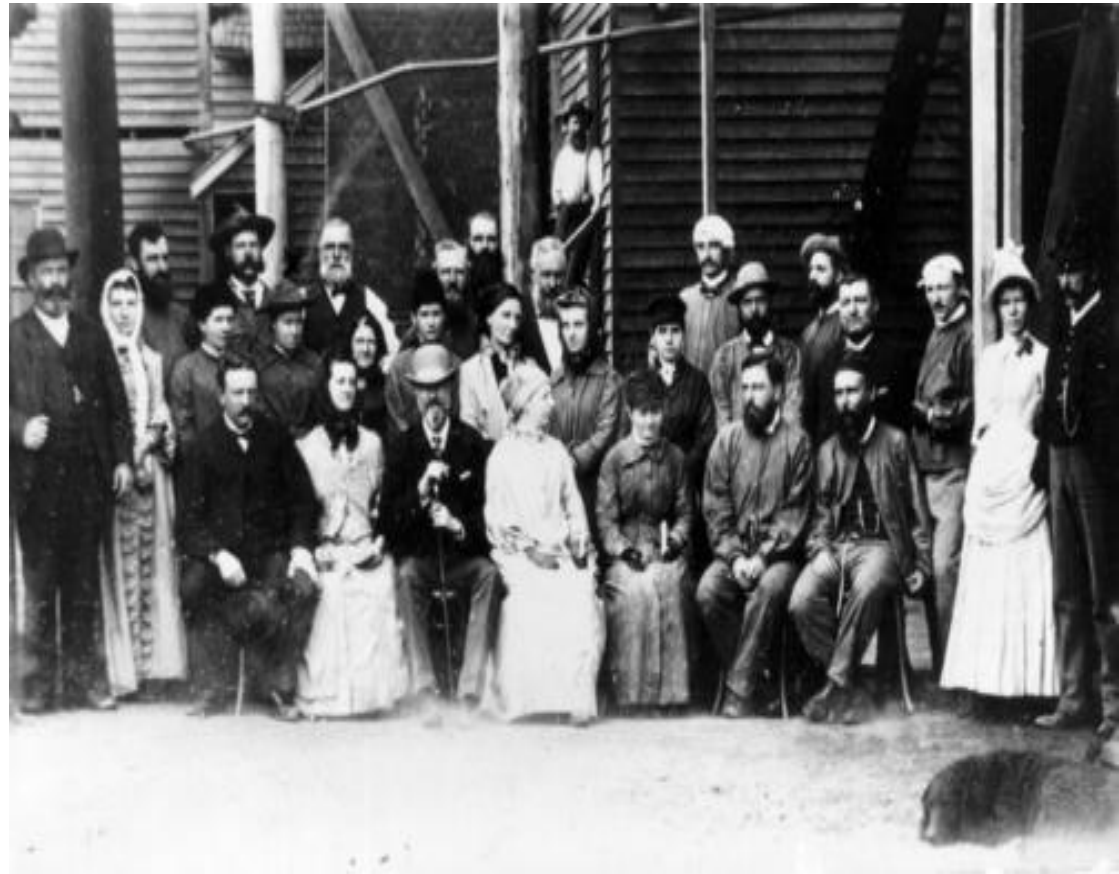






J B Atkinson, Gympie 1897  
Images John Oxley Library

Visit of Sir Anthony & Lady Musgrave  
North Phoenix Mine Gympie 1888



# Christoe St, Copperfield 1876

Images John Oxley Library

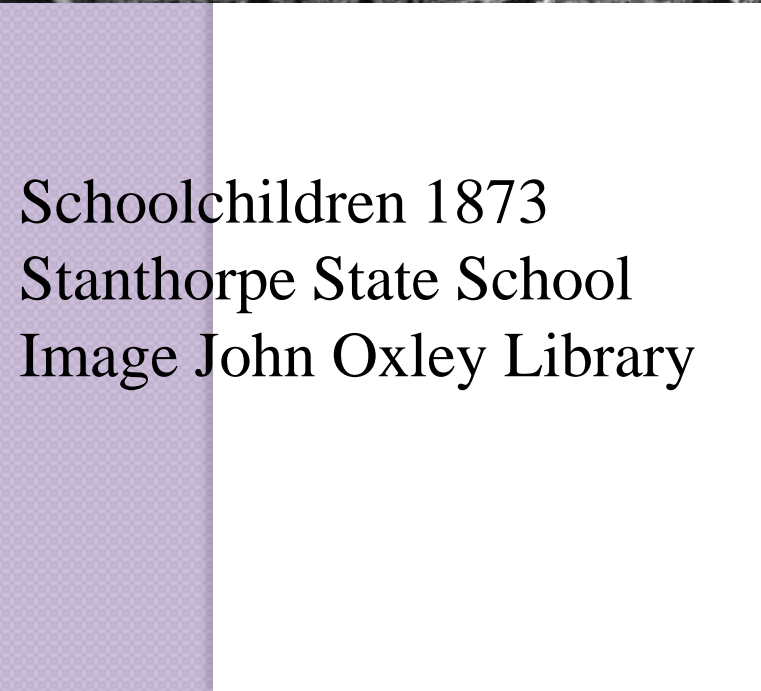






Quart Pot Hotel, Stanthorpe  
1872

Image John Oxley Library



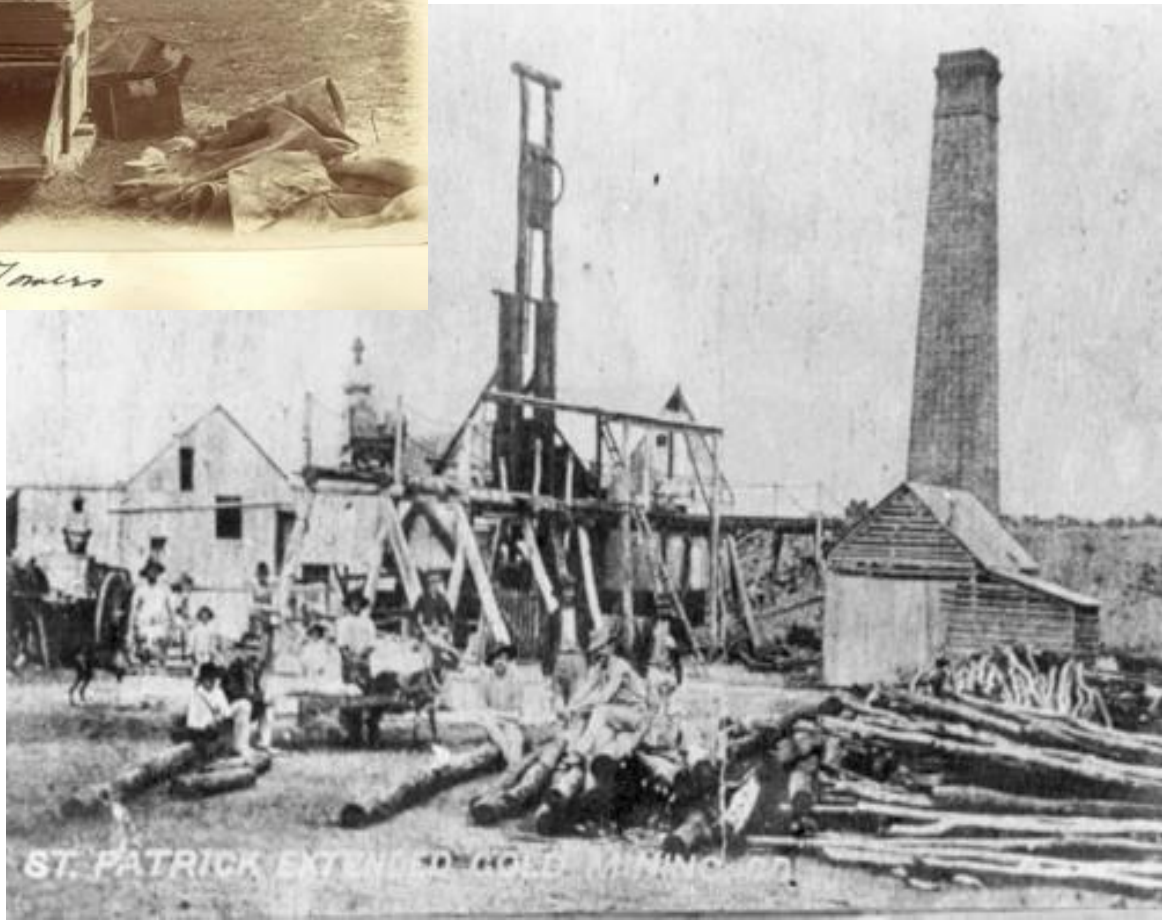
Schoolchildren 1873  
Stanthorpe State School  
Image John Oxley Library

Images John Oxley Library

Cradling for gold outside  
Charters Towers



Workers outside St  
Patrick Extended  
Charter Towers ca 890







Favorite

Actions ▾



Share ▾

← Newer



Older →



## Lightning Ridge - opal mine tunnel

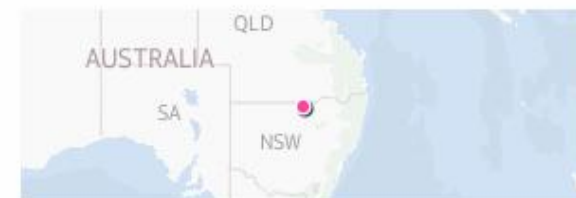
Lightning Ridge is full of small opal mines - people move there, stake a claim and start digging. This mine is no longer active, but open for tourists to explore.

For more info see the [Lightning Ridge](#) entry on the [Big Trip](#) website.

By [the\\_ferret](#)

Jonathan Stilts + Add Contact

This photo was taken on November 1, 2008 in Walgett, New South Wales, AU, using a Canon EOS 350D Digital.



240 views

This photo belongs to

[the\\_ferret's photostream](#) (1,199)



This photo also appears in

► [Big Trip](#) (set)

► [Big Trip](#) (group)

► [Flickr Australia](#) (group)

Tags

<http://www.flickr.com>

# Conclusion

- Follow the gold (don't forget other minerals too)
- Most records are not indexed
- Not everything has survived
- Have fun & good luck!

