

# Mining Ancestors: Where to Look

Shauna Hicks

[www.shaunahicks.com.au](http://www.shaunahicks.com.au)

[www.shaunahicks.com.au/shhe-genie-rambles](http://www.shaunahicks.com.au/shhe-genie-rambles)

<http://diaryofanaustraliangenealogist.blogspot.com>

Twitter: HicksShauna

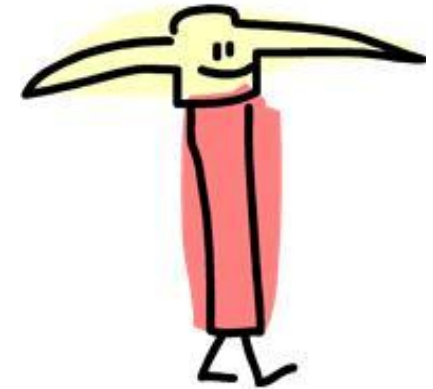


# Introduction

- Background history for context
- Archives & Libraries
- Trade Unions & Company Records
- Historical Societies & Museums
- Miners' Health
- Newspapers & Photographs



# Background History



- Miners moved around
- Major mining rushes (they followed new discoveries)
  - South Australia 1840s
  - Victoria & NSW 1850s
  - Queensland 1860s
  - Tasmania 1870s
  - Western Australia 1890s



- Don't forget the trans Tasman connection





WIKIPEDIA  
The Free Encyclopedia

Article **Discussion**

Read **Edit** View history

Search

# Mining in Australia

# Or New Zealand

From Wikipedia, the free encyclopedia



This article's **lead section may not adequately summarize its contents**. Please consider expanding the lead to **provide an accessible overview** of the article's key points. *(September 2010)*

**Mining in Australia** is a significant **primary industry** and contributor to the **Australian economy**. Historically, mining booms have also encouraged **immigration to Australia**. Many different ores and minerals are mined throughout the country.

## Contents [hide]

- 1 History
  - 1.1 Gold rushes
- 2 Mining
  - 2.1 Minerals and resources
  - 2.2 Mining regions
  - 2.3 Coal mining
  - 2.4 Uranium mining
  - 2.5 Natural Gas
- 3 Economics
- 4 Technology and services
- 5 Lifestyle
- 6 Environment and politics
- 7 Mining disasters
  - 7.1 New Australasia Gold Mine
  - 7.2 Mount Kembla
  - 7.3 Balmain Colliery



Super Pit gold mine at Kalgoorlie in Western Australia is Australia's largest open-pit mine

- Main page
- Contents
- Featured content
- Current events
- Random article
- Donate to Wikipedia

- Interaction
  - Help
  - About Wikipedia
  - Community portal
  - Recent changes
  - Contact Wikipedia

- Toolbox
- Print/export

- Languages
  - Bahasa Melayu
  - Українська

[http://en.wikipedia.org/wiki/Mining\\_in\\_Australia](http://en.wikipedia.org/wiki/Mining_in_Australia)



# Tasmania's Mining History: A bibliography

## General

- Anon., 'Mineral rich regions of Australia', Part 1: Tasmania's Mt Read volcanics. Part 2: The Pilbara region of Western Australia: more than iron ore and gas', in *Johnny Green's Journal*, vol. 9, no. 4, April 1989, pp. 15–18, vol. 10, no. 3, January 1990, pp. 6–10.
- Aubrey, Michael, 'A history of mining exploration starts to pay off: Tasmania', in *Miner*, Darlinghurst, NSW, November 1989, pp. 10–11.
- Blainey, Geoffrey, 'The rise and decline of the West Coast', in Tasmanian Historical Research Association, *Papers and Proceedings*, vol. 4, 1960, pp. 66-74.
- Burton, B., 'Undermining Tasmania: a research paper on the mining industry', Wilderness Society, Hobart, 1989.
- Dickens, Greg, *Mining in Tasmania - a brief history*, Tasmania Geological Survey Record 1995/11, Mineral Resources Tasmania, Hobart, 1995.
- Donovan and Associates, *A Mining History of Australia*, Donovan & Associates History and Historic Preservation Consultants, Blackwood, SA, 1995.
- Fenton, James, *A History of Tasmania from its Discovery in 1642 to the Present Time*, J. Walch and Sons, Hobart, 1884.
- Gaughwin, Denise, 'Trade, Capital and the Development of the Extractive Industries of Northeast Tasmania', in *Australasian Historical Archaeology* 10, 1992 [published 1994], pp. 55–64.
- Hills, Loftus, 'The progress of Geological Research in Tasmania Since 1902', in *Proceedings of the Royal Society of Tasmania*, 1921, pp. 111-146.
- Hogg, E.G., 'The Magnetic Survey of Tasmania', *Proceedings of the Royal Society of Tasmania*, vol. 117, 1983, pp. 81-88.

## *Bibliography of Australian Mining History*

**Minerals**

**Copper**

**Gold**

**Iron**

**Silver and Lead**

## **Tin**

- Anon., 'Tin mining at Mount Cleveland', in *Australian Trader*, vol. 7, September 1970, p. 55.
- Blackaby, Narelle, *Rossarden, Echo of the Mountain*, self-published, Canberra, 2004.
- Cochrane, G.W., *Tin deposits of Victoria*, Bulletin of the Geological Survey of Victoria, no. 60, Department of Mines, Melbourne, 1971.
- Crowther, Edward Lodewyk, *Journal of Prospecting in Gould's Country, N.E. Tasmania, 1875-76*, 19?

[Home »](#)

## Historical resources

[▼ Heritage maps](#)
[▼ Minerals industry historic photo collection](#)
[▼ Heritage primefacts](#)

The department has a number of resources that provide historical information on Minerals & Petroleum activities in NSW.

### Heritage maps

The department's collection of heritage geological maps is in the process of being catalogued, conserved, scanned and archived. In the future high quality copies of these maps will also be available for purchase.

A unique collection of geologically notated parish maps is also being captured and a small sample is provided.

[▶ Heritage maps](#)

### Minerals industry historic photo collection

NSW Department of Primary Industries holds a significant heritage collection of images documenting the activities of the department of mineral resources and the mining industry from the late 1800s to the present.

The images range across geological localities, geologists and other staff at work, mining localities, specimens from the economic rock & mineral collection, micrographs and illustrations used in technical presentations.

The collection is housed in the department's Minerals Division office in Maitland in the Hunter Valley of NSW.

With a prior appointment, researchers may conduct their own search of this collection on-site. DPI staff may also carry out searches at a cost of of \$30 per hour or part thereof for this service.



Fire investigation team wearing Proto breathing apparatus at the C.S.A. Mine near Cobar in 1920. L to R, A. J. Julius - Mine manager, Gwyder Whalen - surveyor & Bob Pivetta - underground foreman.

[www.resources.nsw.gov.au/historical](http://www.resources.nsw.gov.au/historical)







# Department of Transport, Planning and Local Infrastructure



Home

Planning

**Heritage**

Local Government

Sport & Recreation

You are here: > Home > Heritage > Historical archaeology > The history of gold mining in Victoria

About ▶

Grants ▶

Publications & Research ▶

Projects & Programs ▶

News & Events ▶

## Heritage

Permits ▶

Victorian Heritage Register ▶

Caring for heritage places and objects ▶

Heritage Forms & Guidelines ▶

Local Government ▶

**Historical archaeology ▼**

Archaeological sites and the Heritage Inventory ▶

# The history of gold mining in Victoria

Victoria has a rich history in gold mining. It was the main reason for immigration to Victoria in the from the 1850s to the 1900s. The remnants of mining activities remains today in the form of historical archaeological artefacts and sites.

Over 3000 sites are recorded in the gazetteers (based on the State's mining divisions).

In addition the historic gold mining potted histories contain concise histories by area.

We have developed a comprehensive inventory of the State's extant historic gold mining sites on public land. The complete reports collection is available through our offices.

For further information, please contact [archaeology.admin@dpcd.vic.gov.au](mailto:archaeology.admin@dpcd.vic.gov.au).



Top ▲

## OMELO DISTRICT GOLDFIELD - NOTES

- 1851:** Gold officially discovered at Livingstone Creek, Omeo, by men employed by Edward Crooke, licensee of Hinno Mungey station, about 10 miles below Omeo - small rush followed - about 100 - worked with shovel and tin dish - almost abandoned mid-1852. Area prospected as far as Cobungra station. Among early parties was Hedley. (Flett, p. 169)
- 1852:** Gold found at Bindi on Tambo River. (Flett, pp. 171-2)
- 1854:** Early in year, 50 miners at Omeo, surfacing and sluicing - later that year, 180 men 'between Mt Livingstone and the Swamp', working in creek or on eastern bank terraces. (Flett, p. 170)
- 1854-6:** Mining camp called Omeo - became a town in 1856. (Flett, pp. 170-71)
- 1855-7:** First in series of long sluicing races constructed - Champagne and Co. (Frenchmen) built theirs early in 1855 - they were original party to work the area now known as the Oriental claims. Fitzgerald and party commenced cutting races, which delivered water to Bloomfield's Gully, and (later) Pioneer claims.<sup>1</sup>
- 1856-7:** Gold found in tributaries of Livingstone Creek - Dry Creek and New Rush Creek opened, 1857. (Flett, p. 170).
- 1856+:** The alluvial deposits in the Dry Gully area (now loosely grouped as the Oriental claims) 'are over one hundred feet thick in parts [and] apparently occupy the bed of an ancient tarn or mountain lake, and are auriferous for almost the complete depth...'<sup>2</sup>
- 1857-60s:** Fitzgerald and party took up claims on hill at junction of Livingstone Creek with Dry Gully and Mountain Creek in 1857 - working ground as Pioneer claim, ground sluicing, in 1858. Pioneer and French parties competed for water rights - Fitzgerald took up agricultural ground around Dry Hill and west of Livingstone Creek - restricted others from building water rights around his ground.<sup>3</sup>
- 1863-4:** Township and Pioneer reefs opened up. (Flett, p. 171)
- June 1864:** 425 alluvial miners (275 Chinese, 150 Europeans) - no quartz miners. Population focused on Livingstone Creek (265) and Mitta-mitta River, from Cobungra to Wombat Creek (120) - 20 at Tambo River and Swift's Creek, 15 at Wombat Creek. Chinese population does little mining in winter months - cannot endure the cold at Omeo.

## BEECHWORTH GOLDFIELD

- | DATE            | HISTORY: •   |
|-----------------|--|
| <b>1852:</b>    | First discovery on present site of Beechworth, February 1852. <sup>1</sup>   |
| <b>1853:</b>    | Woolshed (part of Reedy Creek, about 6 km below Beechworth) opened 1853 - extraordinarily rich by 1855 - township extended for 2_ miles, but almost deserted within a few years. <sup>2</sup>  |
| <b>1855:</b>    | Discoveries of new fields at Eldorado in 1855 and Wooragee (Magpie Creek), north of Beechworth, in 1856. <sup>3</sup>  |
| <b>1856:</b>    | Small party cut a tail-race from the Spring Creek falls up to the alluvial flats on Spring Creek, east of Beechworth, then virtually abandoned, 1856 (future Rocky Mountain Co. claim) - had been held in very small claims and worked by sinking and driving, then tub-and-cradled - tail-race 20 chains long, blasted 2-8 ft deep through rock - took 18 months to complete, cost £3,000 - not deep enough to drain deepest ground - much gold left behind. <sup>4</sup> |
| <b>1859:</b>    | Spring Creek, 1859 - called Spring Creek above the Upper Falls and Woolshed Creek below the Lower Falls - originally worked in paddocks - slabs and bark used to prevent sides falling in - then worked over again with sluice-boxes - now being worked for third time, by improved sluicing methods. <sup>5</sup>   |
| <b>1860:</b>    | 2,310 European miners, 2,139 Chinese <sup>6</sup> - Upper Three-Mile Creek worked since 1852 - now chiefly taken up by Chinese, sluicing (likewise Lower Three-Mile/Bowman's). <sup>7</sup>  |
| <b>1861:</b>    | Battery of 16-head, 15-hp steam engine erected at Two-Mile Reef, 1861. <sup>8</sup> <ul style="list-style-type: none"><li>• The 'great' Excelsior tail-race, Reid's Creek, being extended by blasting through tough granite, 15 ft deep, 1861.<sup>9</sup></li></ul>   |
| <b>1861:</b>    | Bawden's (or Rawden's) Steam Co., Woolshed, 1861 - 'have given up the system they first adopted, of ground sluicing their claim, and in consequence of having little or no fall to work upon, lifting up the tailings and water by buckets on an endless band of vulcanised India rubber some 15 ft and discharging it over the bank into the creek; they now only lift the water and bank up the tailings as well as they can.' <sup>10</sup>                             |
| <b>1861:</b>    | German and Durham crushing machine, 2-Mile Creek, 1861 - 12-head, 12-16 hp engine. <sup>11</sup>   |
| <b>1861-62:</b> | European miners leaving for the Lachlan and New Zealand, 1861-2 - Chinese taking over ground. <sup>12</sup>  |





## Quick Links

- [Eaglehawk Festival 2012 Photo Galleries](#)
- [Resource Centre Hours](#)
- [Latest News](#)
- [Ballarat Branch](#)
- [Geelong Branch](#)
- [OverlandGold](#)
- [Contact Us](#)



### Welcome to the "Home Page" of the Cornish Association of Victoria Inc, Australia.

Browse the menus above and enjoy all we have to offer. If you live in Victoria, Australia you might like to join our vibrant Association. We meet at the Oakleigh Baptist Church Hall, which is situated at the corner of Warrigal Road and Moorookyle Avenue, Oakleigh. (Melway Ref. Map 69 E10).

For all enquiries contact the Secretary: [Miss June Whiffin](#),

Monthly meetings are held the 3rd Saturday, between 1.30 pm and 4.30 pm. February to November and the 2nd Saturday of December.

Library and Research facilities are also situated at the Church Hall, and are open on the 2nd Tuesday, the 3rd Saturday and 4th Monday of each month from 10 am to 2 pm (except January).

The first meeting for 2013 will be on Saturday 16th February.

Title of presentation: Tour of Cornwall May 2012 Visit.

Lynette & Graeme Madden & other CAV tour members speak and show picture presentation of their May 2012 tour

Take a look at the menus above and there is sure to be information and/or images of interest.

**Ballarat Branch** – meets on the 1st Saturday of EVEN months at 5.00pm. The venue is the Skipton Street Uniting Church Hall – cnr Skipton & Darling Streets, Ballarat South (opposite Skipton and Drummond St crn).

Branch Secretary: [Lenice Stuchbery](#)



# HISTORY - NAMES



Home Culture History Language Music Myth Politics Religion What's on

*'The splendour of the history of Wales is that, unlike most other countries, the tradition of the nation has persisted through thousands of years.'* \*


**The Welsh have been involved in the development of Australia from the earliest days of European settlement.** Their impact has been notable in a number of key areas of Australian life -- especially in the mining industry -- but has always been limited by their relatively small numbers. It has also been obscured by the long-held but misleading view that, with the exception of the Irish, all British people who have settled in Australia have been culturally homogeneous. Although overwhelmingly Protestant and, since the sixteenth century, politically and economically integrated with England, the Welsh have brought to Australia a distinctive cultural identity' - A. Ffestin Hughes

 <p>Original Southern Cross from the Eureka Stockade</p>	<b>The Birthplace of Australian Democracy</b>	
---	---	---

**+** IN AUSTRALIA

**John Basson Humffray** was born in [Newtown](#), Wales and became active in the [Chartist](#) movement before migrating to Australia.

After campaigning for better rights for the miners on the Victorian goldfields Humffray was elected inaugural President of the [Ballarat Reform League](#) at a monster meeting of over 10,000 diggers at Ballarat in 1854. He met with Governor

	<b>+</b> IN AUSTRALIA	<b>A New Nation is Born</b>	Sir
<p><b>SAMUEL WALKER GRIFFITH</b> (1845-1920); chief justice and premier, was born at Merthyr Tydfil, Glamorganshire, Wales, second son of Rev. Edward Griffith, Independent minister, and his wife Mary. He travelled extensively in many countries of the world and made a name as a brilliant young barrister. He strove to protect aborigines, fought for free, secular compulsory education and spearheaded the legislation of trade unions to improve relations between labour and capital. In 1891 he was given the task of drafting the Constitution for the Commonwealth of</p>			

<http://web.aanet.com.au/soulpsychology/welshaustralian/Historyindex.htm>



# Archives & Libraries

- State – Fact Sheets, Published Guides, Online Catalogues (inter library loans)
- University
  - Noel Butlin Archives Centre
- Specialist
  - Bendigo Regional Archives Centre



## Mining Records

Queensland State Archives holds an extensive collection of records of the Mines Department and the Mining Warden's Offices throughout the State. They relate to the development and government administration of the Queensland mining industry since separation. The mining industry has always played a significant role in the Queensland economy and a large proportion of the population of Queensland was employed in the mining industry prior to World War I. Research of mining records is time-consuming because of the large number of departmental indexes and the fragility of the registers and ledgers. Photocopying of registers is not permitted because of possible damage to the original binding. Some early press copy letterbooks are too fragile to be re-opened and are therefore closed to public access.

There are separate series of records for the three types of mining - gold, coal and base metals - as specified in the Mining Act and the Coal Mining Act. Mining records are accessioned under the general headings:-

**MINES DEPARTMENT**  
**GOLD COMMISSIONER** (before 1874)  
**MINERAL LANDS COMMISSIONER** (1872 - 1898)  
**MINING WARDEN** (from 1874)  
**INSPECTOR OF MINES**  
**MINING REGISTRAR AND ASSISTANT MINING REGISTRAR**

## Miners' Homestead Leases

### Brief Guide 48

*The Gold Fields Homestead Act* of 1870 encouraged gold miners and others to become permanent residents on the gold fields of Queensland. From 1 March 1871 it repealed the *Gold Fields Towns Lands Act* of 1869 and enabled any holder of a miner's right, business license or gold mining lease (or any other authorised adult resident) to make application for a lease of land on a proclaimed gold field. The applicant must have been resident on the field for not less than six months and the application had to be lodged at the office of the Commissioner in charge of the gold field. The area applied for was not to exceed 40 acres. An Application Book was to be kept at the office of the Gold Commissioner on every proclaimed gold field. The number of applicants was restricted to one hundred on each field and leases were transferable. Any miner with a valid miner's right was able to search for gold on the land.

An amendment to the Act in 1880 enabled any holder of a miner's right to apply for a lease not exceeding a quarter of an acre within the limits of a township for residence or business purposes. This amendment also directed that all rents and revenue from the leases be paid to a special fund to be expended on roads, bridges and other public works on the respective goldfields under the superintendence of the relevant local authority.

*The Gold Fields Homestead Leases Act* of 1886 repealed the previous acts. It changed the areas of proposed leases: leases could be up to half an acre within township limits, five acres within two miles of the town boundaries and forty acres beyond two miles.

*The Mineral Homestead Leases Act* of 1891 authorised the issue of Homestead Leases in Mining Districts (i.e. for mining other than gold), on terms which were the same as for the Gold Fields Homestead Leases. Shauna Hicks Norfolk Island 2014

## Index to Mineral Leases 1871-1940

This Index was created from several series of records created by the Mines Department and the Mining Warden, Cloncurry. The majority of these records are the printed lease documents with identifying information completed by hand.

### Background

1. **Series ID 18221 (MIN/N1-48), Gold mining leases** dated 1/8/1871 - 31/7/1919. Details given include name(s) of applicant(s) for lease, where they were from, yearly rent payable, Act under which lease was granted, where the lease was situated (name of goldfield), area of land, term (in years) and date of commencement of lease, minimum number of miners to be employed, county and parish, description and sketch map of boundaries of lease, transfers (date and to whom).
2. **Series ID 18222 (MIN/O1-56), Mineral leases** dated 21 Jan 1884 - 11 Oct 1940. Details given include name(s) of applicant(s) for lease, where they were from, mineral sought, yearly rent payable, district where the lease was situated, area of land, term (in years) and date of commencement of lease, description and sketch map of boundaries of lease, transfers (date and to whom).
3. **Series ID 7367 (A/20586), Index to Coal Mining Licence Register under the Act of 1886** dated 12/1/1888 - 23/7/1954. This record is an Index to coal mining licence register under the Minerals Lands (Coal Mining) Act of 1886. Details include licence number, name and folio number. Folio numbers from 299 - 590 provide access to **Series ID 17138 (B1265), Register of Coal Prospecting Licences** dated 12/1/1888 - 23/7/1959. [Please note this item (B/1265) is not included in the Mineral Leases 1871-1940 Index].
4. **Series ID 9132 (A/45843), Mineral and Water Race Leases** dated 16/9/1910 - 30/11/1933. Details given include name of mineral field, county and parish, locality area, date of lease, names of lessees and details of transfers.

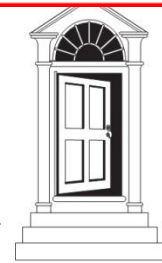
[www.archives.qld.gov.au](http://www.archives.qld.gov.au)





Name of Company	Date of Registration	File No.	Book	Registration Year	Companies Office
Lady Ann P C United Gold Mining Company Ltd	19/05/1888	84	5		
Lady Augusta Gold Mining Company Ltd	22/05/1888	89	5		
Lady Carrington Gold Mines Limited	18/04/1898	75	9		
Lady Don Gold Mining Company Ltd	21/12/1883	233	2		
Lady Eleanor Gold Mining Company Ltd	08/06/1886	270	3		
Lady Flora & Doctor's Extended Gold Mining Company Ltd	18/03/1884	265	2		
Lady Florence Extended Gold Mining Company Ltd	23/02/1888	41	5		
Lady Florence G M Co Ltd	10/04/1895	299	7		
Lady Florence No 1 West Gold Mining Company Limited	05/08/1895	43	8		
Lady Franklin Gold Mining Company Ltd	25/09/1885	181	3		
Lady Helena G M Co Ltd	26/08/1889	298	5		
Lady Isabelle and Content United G M Co Ltd	21/01/1892	295	6		
Lady Isabelle Block G M Co Ltd	25/09/1891	220	6		
Lady Isabelle Limited	25/10/1895	77	8		
Lady Isabelles No 2 & 3 South United G M Co Ltd	07/06/1892	32	7		
Lady Jane Gold Mining Company Limited	16/08/1886	291	3		
Lady Lamington Gold Mining Company (No Liability)	10/06/1896	141	8		
Lady Lamington Gold Mining Company Limited	31/07/1899	256	9		
Lady Margaret Extended G M Co ( No Liability )	01/12/1891	268	6		
Lady Margaret G M Co Ltd	11/09/1891	216	6		
Lady Maria Extended G M Co Ltd	05/11/1891	248	6		
Lady Maria Gold Mining Company Limited	26/05/1885	122	3		
Lady Maria Gold Mining Company Ltd	16/06/1882	97	2		
Lady Marici Gold Mining Company Limited	16/06/1882	97	2		
Lady Mary 1 & 2 South Gold Mining Company Ltd	09/01/1888	300	4		
Lady Mary and New Zealand G M Co Ltd	10/08/1893	140	7		
Lady Mary Company (No Liability)	02/09/1907	135	1	1907	Townsville
Lady Mary Gold Mining Company Boonoo Boonoo Ltd	16/11/1887	254	4		
Lady Mary Gold Mining Company Limited	27/11/1894	258	7		
Lady Mary Gold Mining Company Limited	15/09/1902	32	11		
Lady Mary Gold Mining Company Ltd	10/10/1872	94	1		

[www.archives.qld.gov.au](http://www.archives.qld.gov.au)



## **Petitions of the People**

### **Petitions from the Nineteenth Century Correspondence to the City of Sandhurst (Bendigo)**

[www.brac.vic.gov.au](http://www.brac.vic.gov.au)

VPRS 16936 P1 (1856-1899)

Selected from Bendigo Council's Inwards Correspondence (VPRS 16936) "Petitions of the People" allows a rare insight into life from 1856 to 1899, a period when this gold mining tent town grew into a thriving Victorian city.

A signature on a petition may be the only tangible evidence that an ancestor lived in Bendigo, practiced a particular trade or profession or felt strongly about a local issue.

The Bendigo Regional Archives Centre (BRAC) was successful in receiving funding from the Victorian Government in celebration of the 175th anniversary of the founding of Melbourne.

As BRAC's contribution to this 175th birthday, more than 200 petitions will be digitised. The first twenty petitions available cover three significant themes: Occupations, Women and the Post Office Clock, and more than 1000 names.

[Search for a name and links to the Petitions](#)

More petitions will be added to the collection as they are ready.

If you can help us correct unknown or misspelt names, please email [brac@ncgrl.vic.gov.au](mailto:brac@ncgrl.vic.gov.au)

[More information about the petitions](#)

### **Find your ancestor - More names to search!!**

We now have 5625 names in our searchable "Petitions of the People" list.

In addition to the 20 digitised petitions that are readily available on our web page, we have indexed and digitised a further 150 petitions, and now have a total of 5,625 names on our searchable list.



## **BRAC Collection**

BRAC is an approved Place of Deposit (POD) for local and regional government records and certified by Public Record Office Victoria to hold permanent records. BRAC houses the extensive public records of the five Local Government bodies that have become the City of Greater Bendigo:- Bendigo (Sandhurst), Eaglehawk, Huntly, Marong and Strathfieldsaye. Many McIvor Shire records will be included.

Records from other Local Government authorities in the region will be collected.

Private records created by local organisations and individuals will also be collected and preserved.

The BRAC collection will reflect the history of Local Government administration, local events, individuals, institutions and organisations in the Bendigo region.

Local Government Records will become available as they are processed.

[BRAC Guide No. 3 - Guide to Bendigo and District Rate Records](#)

[BRAC Guide No. 4 - Records available as of February 2012](#)

NOEL BUTLIN ARCHIVES  
CENTRE[Home](#)[Collections](#) ▾[Companies](#)[Organisations](#)[Personal papers](#)[National AIDS Archive  
Collection](#)[Maps](#)[Photographs](#)[Finding aids](#) ▾[Ablative](#)[Subject Guides](#)[Treasures of the Archives](#)[Using the Archives](#) »[For Depositors](#) »[News & events](#) »[Publications](#)[Frequently asked questions](#)

## Subject Guides

Subject guides are written by archivists at the Noel Butlin Archives Centre to introduce researchers to the various topics that can be researched at the Centre. They cover many popular research areas.

### On-line subject guides:

- [Australians in the First World War \(PDF 116KB\)](#)
- [Australians in the Second World War \(PDF 155KB\)](#)
- [Australian/Indonesian relations \(PDF 118KB\)](#)
- [Colonial Sugar Refining Company \(CSR\) Limited records relating to employees \(PDF 134KB\)](#)
- [Communist and socialist publications \(PDF 114KB\)](#)
- [Family history sources in the Noel Butlin Archives Centre \(PDF 106KB\)](#)
- [Gold Mining \(PDF 109 KB\)](#)
- [Intercolonial Trade Union congresses \(PDF 139 KB\)](#)
- [Peace movement in Australia \(PDF 150 KB\)](#)
- [Records about Aboriginal People \(PDF 119KB\)](#)
- [Spanish Civil War \(PDF 120KB\)](#)

[www.archives.anu.edu.au](http://www.archives.anu.edu.au)

Shauna Hicks Norfolk Island 2014



## ANU ARCHIVES PROGRAM

Noel Butlin Archives Centre

Telephone: +61 2 6125 2219

Email: [butlinarchives@anu.edu.au](mailto:butlinarchives@anu.edu.au)

[www.archives.anu.edu.au](http://www.archives.anu.edu.au)

[www.archives.anu.edu.au](http://www.archives.anu.edu.au)

## RECORDS ABOUT GOLD MINING

### COMPANY RECORDS

The Noel Butlin Archives Centre holds records of a number of companies involved in gold mining. Some examples of company records are:

#### Adelaide Steamship Company Ltd

Outwards Correspondence relating to private freighting accounts & syndicates of J Turnbull (Secretary and General Manager), 1888-1892 (N46/566)

#### Australian Agricultural Company

Letters to General Superintendent regarding potential gold deposits, 1853-1856 (1/46/1)

Mineral prospecting papers including letters, tracings and reports in connection with prospecting in the Port Stephens district, 1855-1904 (1/64/4)

#### Clarke and Co (Melbourne)

Company, 1932 (67/72)

Correspondence of TM Owen regarding Wiluna Gold Mines Ltd, WA, 1927-1932 (67/71)

Correspondence of TM Owen regarding Reef Gold Mine, Gundagai, 1932 (67/66)

Correspondence of TM Owen regarding Occidental Gold Mines NL, 1932-1933 (67/62)

Correspondence of TM Owen regarding Main Ridge Gold Mine, 1932 (67/58)

#### Peel River Land and Mineral Company

Despatches from the early years of the company documenting initial success in the search for gold followed by the decline in value to the company. They include monthly reports of gold licences issued.

### UNION AND ORGANISATION RECORDS

The records of many unions and organisations include files about gold miners. The items listed below are just a sample.

#### Australian Workers Union (Head Office)

Industrial Court Transcripts Gold and Metalliferous Mining Industry, 1917 (N117/622-624)

Minutes of the Amalgamated Miners Association, Wrightville, Ganbelego Branch. Includes minutes of the Truckers & Boodlers of Mt Boppy Goldmine, 1910 (N117/1467)

#### Federated Engine Drivers' and Fireman's Association of Australia (Federal Council)

Tasmanian Goldmines, transcript of proceedings in the Commonwealth Conciliation and Arbitration Court, 1913 (T56/3/4-5)

#### Federated Engine Drivers' and Fireman's Association of Australia (NSW Branch)

Demarcation dispute with AWU over gold mining, 1983-1989 (N129/528-530)

Holdway-McMahon - Mt Carrington Goldmines (Drake Operation), 1988 (N129/1182)

Fitzherbert, PB, *The crisis: New Zealand's future depends upon your vote* Wellington, New Zealand, 1931 (Gold Standard) (P5/1/375)

Fitzherbert, PS, *The dawn of the new outlook* Wellington, NZ, 1931 (P5/1/376)

Mining Act, also amending Acts with Regulations thereunder, 9th edition, Sydney Government Printer, 1894 (P5/1/887)

Moloney, Dan, *The history of Addson's Flat goldfields* Westport, New Zealand, Westport News, 1923 (P5/1/818)

#### Miscellaneous Pamphlet Collection

*From Tent to Parliament: the life of Peter Lalor and his coadjutors, and history of the Eureka Stockade Ballarat*, 1934 (P56/253/22)

Lenin, VI *The Importance of Gold Now and After the Victory of Socialism*, Sydney, Modern Publishers Pty Ltd, first published in USSR Nov 1921 (P56/250/54)

#### Australian Agricultural Company, London

*Guide to the Northern Gold Fields by an Old Bushman*, Sydney, Woolcott & Clarke, 1856 (78/1/25)



State Library collections

e-resources

SLQ collections + e-resources

mining and history

All South Bank Collections

Search

Advanced search

Refine your search: Books that contain my query words anywhere in the record

Did you mean: china and history?

## Show only

[Full Text Online](#) (3)  
[Available in the Library](#) (513)

## Refine my results

Subject  
[Gold mines and mining](#) (274)  
[Mines and mineral resources](#) (62)  
[Australia](#) (60)  
[Coal mines and mining](#) (47)  
[Victoria](#) (25)  
[Show 15 more](#)

Author/Creator

## 523 Results for All South Bank Collections

sorted by: Relevance

1-10 [Next](#)Show only [Full Text Online](#) (3) | [Available in the Library](#) (513)☆ [The Gold rushes](#)W. P. Morrell (William Parker), 1899-  
London : Adam and Charles Black 1940  
**Available:** Open access, level 4 (J 994.03 mor )[Request](#) [Locations](#) [Details](#) [Reviews & Tags](#) [More](#)

This is 1 of 2 versions of this work

☆ [The rush that never ended : a history of Australian mining](#)Geoffrey Blainey 1930-  
Parkville, Vic. : Melbourne University Press 1963  
**Available:** If available, request & collect from level 4 (J 622.0994 bla ) and<http://onesearch.slq.qld.gov.au>






All our websites

Our Catalogue

Go to whole of WA Government search

# Dead Reckoning

How to find your way through the genealogical jungle of Western Australia

## Dead Reckoning

How to Begin

The Battye Library

Books

Serials

Other Material

Private Archives

Indexes and

Catalogues

State Records Office





Archive Accessioning  
Systems

Government Archival  
Records

Other Australian  
States and Overseas

Further Sources

Abbreviations

Share this page    

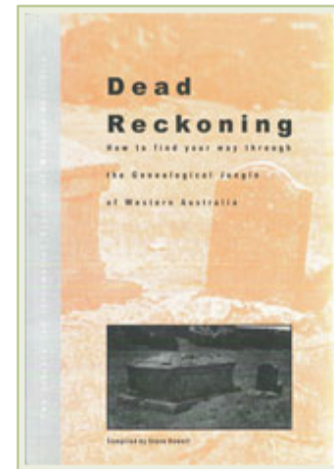
## Dead Reckoning: a guide to family history research in WA

If you are a novice family historian just starting out tracing your family tree or an experienced genealogy researcher looking for whatever happen to the elusive great uncle. Dead Reckoning is your handbook to family history research in Western Australia.

**Dead Reckoning: how to find your way through the Genealogical Jungle of Western Australia** (compiled by Steve Howell) was first published in 1997. It was an update of the 1983 Library Board of Western Australia publication: [Tracing your ancestors: a guide to genealogical sources in the J.S. Battye Library of West Australian History](#).

Since 1997, the Battye Library and the State Records Office have received new material of interest to anyone undertaking genealogical and biographical research. As well, many relevant internet resources have been developed. Following a grant from the Sholl Bequest (administered by the Friends of Battye Library Inc.), it was decided to revise and publish the book online, so it can be regularly updated as appropriate resources and material are found.

The online publication is divided into various sections. The first section covers how to begin, legal deposit, copyright,



[www.slwa.wa.gov.au/dead\\_reckoning](http://www.slwa.wa.gov.au/dead_reckoning)





Search for ...

All our websites

Our Catalogue

Go to whole of WA Government search

# Dead Reckoning

How to find your way through the  
genealogical jungle of Western Australia

## Indexes and Catalogues: A-M

- Arrivals
- Biographical
- Births, Baptisms, Deaths, Burials & Marriages
- Cemeteries
- Colonial Secretary's Office
- Correspondence
- Convicts
- Inquests
- Land Owners
- Members Interests Directories
- Military
- Mining Lease Holders**

[Dead Reckoning](#) > [Indexes and Catalogues](#) > [A-M](#) > [Mining Lease Holders](#)

printer friendly

Share this page

## Mining Lease Holders

[Mining lease holders names 1 January 1892 to 31 December 1909 \[microform\].](#)

Bayswater, W.A. : Western Australian Genealogical Society, [1996].  
[929.39 MIN]

This is a microfiche index of mining lease holders 1892-1909. It has been taken from a Mines Department Nominal Index to Mining Tenements ([CONS 4603/6 - Record Series 1028](#)) and provides the name of the lease holder, lease number, goldfield and date of lease holding.

Page last updated: Tuesday 23 November 2010

[www.slwa.wa.gov.au/dead\\_reckoning/indexes\\_and\\_catalogues/a-f2/mining\\_lease\\_holders](http://www.slwa.wa.gov.au/dead_reckoning/indexes_and_catalogues/a-f2/mining_lease_holders)



# Trade Unions & Company Records

- Miners often belonged to a union
- Membership records may be useful
- Mining not always solitary pursuit
- Companies may be worth looking at – especially shareholders



[Home](#)[About](#)[Search](#)[Browse](#)

## Welcome to the Australian Trade Union Archives

A gateway for researchers and scholars of labour history

- [Find people](#)
- [Find trade unions](#)
- [Find peak union bodies](#)
- [Find employer bodies](#)
- [Find government agencies](#)
- [Find publications](#)

### Search

**GO**

e.g. name of organisation, person.

→ [Advanced search](#)

### Parties to the Award



#### [Parties to the Award](#)

A Guide to the pedigrees and archival resources of Federally registered trade unions, employer associations and their peak councils in Australia 1904-1994.

### Timeline



#### [Timeline](#)

A timeline relating to labour history in Australia 1788-2001.

[www.atua.org.au](http://www.atua.org.au)



## Search results for: mining

178 results found.

18 pages of results.

1. [Construction Forestry Mining & Energy Union \(i\) - Trade Union entry - Australian Trade Union Archives](#)  
... O P Q R S T U V W Y Trade Union entry Construction Forestry Mining & Energy Union (i) (1992- 1993) CFMEU Chart 7 ...  
Terms matched: 1 - 8 Nov 2010 - URL: <http://www.atua.org.au/biogs/ALE0383b.htm>
2. [Construction Forestry Mining & Energy Union \(ii\) - Trade Union entry - Australian Trade Union Archives](#)  
... O P Q R S T U V W Y Trade Union entry Construction Forestry Mining & Energy Union (ii) (1993-) CFMEU Chart 7: ...  
Terms matched: 1 - 8 Nov 2010 - URL: <http://www.atua.org.au/biogs/ALE0384b.htm>
3. [Construction Forestry & Mining Employees Union - Trade Union entry - Australian Trade Union Archives](#)  
... P Q R S T U V W Y Trade Union entry Construction Forestry & Mining Employees Union (1992) Chart 7: Trade Unions- Building, Construction ...  
Terms matched: 1 - 8 Nov 2010 - URL: <http://www.atua.org.au/biogs/ALE0385b.htm>
4. [Federated Mining Mechanics Association of Australasia - Trade Union entry - Australian Trade Union Archives](#)  
... N O P Q R S T U V W Y Trade Union entry Federated Mining Mechanics Association of Australasia (1929- 1990) Chart 7: Trade Unions ...  
Terms matched: 1 - 8 Nov 2010 - URL: <http://www.atua.org.au/biogs/ALE0427b.htm>
5. [Australasian Coal & Shale Employees Federation - Trade Union entry - Australian Trade Union Archives](#)  
... 1990) Miners' Federation Chart 7: Trade Unions- Building, Construction, Mining and Timber Industries Details From 1916 To 1990 Functions Trade Union (Federal) ...  
Terms matched: 1 - 8 Nov 2010 - URL: <http://www.atua.org.au/biogs/ALE0103b.htm>
6. [Federated Mining Employees Association of Australia \(i\) - Trade Union entry - Australian Trade Union Archives](#)  
... N O P Q R S T U V W Y Trade Union entry Federated Mining Employees Association of Australia (i) (1912- 1914) Chart 22 ...  
Terms matched: 1 - 8 Nov 2010 - URL: <http://www.atua.org.au/biogs/ALE0425b.htm>
7. [Amalgamated Mining Employees Association of Victoria & Tasmania - Trade Union entry - Australian Trade Union Archives](#)  
... N O P Q R S T U V W Y Trade Union entry Amalgamated Mining Employees Association of Victoria & Tasmania (1912) Chart 22: Trade Unions ...  
Terms matched: 1 - 8 Nov 2010 - URL: <http://www.atua.org.au/biogs/ALE0039b.htm>





# Australasian Coal & Shale Employees Federation (1916 - 1990)

Miners' Federation

<b>From</b>	1916
<b>To</b>	1990
<b>Functions</b>	Trade Union (Federal)
<b>Reference No</b>	087V

## Summary

Registered federally in 1913 as the Australasian Coal Miners' Association this union was buoyed significantly in 1914 by the inclusion of members from the defunct Victorian Coal Miners' Association. In 1916 the Australasian Coal Miners' Association changed its name to the Australasian Coal & Shale Employees' Federation which operated until 1990 when it amalgamated with the of Australasia to form the United Mineworkers' Federation of Australia. In 1992 the BWIU Amalgamated Union in 1992 and later that year with the Federation of Australasia and the Operative Plasterers' & Plaster Workers' Union in 1993 following amalgamations with the Federated Furnishers' & Decorators' Union of Australia and the Operative Plasterers' & Decorators' Union of Australia.

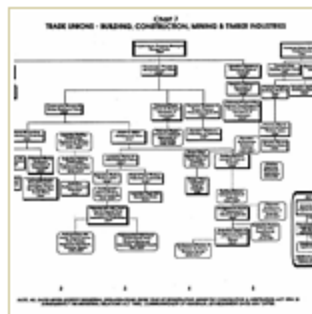


Chart 7: Trade Unions - Building, Construction, Mining and Timber Industries

## Timeline

- ? - 1874 Sandhurst Miners Association
- ? - 1874 Buninyong Miners Association
- ? - 1874 Blackwood Miners Association
- ? - 1874 Clunes Miners Association
- ? - 1874 St Arnaud Miners Association
- ? - 1874 Malmsbury Miners Association
- ? - 1874 Stawell Miners Association
- ? - 1874 Maldon Miners Association
- ? - 1874 Haddon Miners Association

1870s - c. 1883 Creswick Miners Association

1874 - c. 1884 Amalgamated Miners Association of Victoria

1907 - 1914 Victorian Coal Miners Association

c. 1884 - 1916 Amalgamated Miners Association of Australasia

1913 - 1916 Australasian Coal Miners Association

**1916 - 1990 Australasian Coal & Shale Employees Federation**

1990 - 1992 United Mineworkers Federation of Australia

1992 Construction Forestry & Mining Employees Union

1992 - 1993 Construction Forestry Mining & Energy Union (i)

1993 - Construction Forestry Mining & Energy Union (ii)

[www.atua.org.au](http://www.atua.org.au)

## Browse Entries

[A](#) [B](#) [C](#) [D](#) [E](#) [F](#) [G](#) [H](#) [I](#) [J](#)  
[K](#) [L](#) [M](#) [N](#) [O](#) [P](#) [Q](#) [R](#) [S](#) [T](#)  
[U](#) [V](#) [W](#) [Y](#)

---

## SELECTED EVENTS IN TRADE UNION HISTORY

# Wonthaggi Coal Strike (1934)

<b>From</b>	1934
<b>To</b>	1934
<b>Functions</b>	Strike

## Summary

In response to depression-era setbacks, miners at the Wonthaggi State Coal Mine go on strike. After five months the Menzies government eventually succumbs to the Miners' Federation's demands and in so doing, helps to pave the way for the gradual nationwide restoration of conditions and wages lost during the years of the depression.

---

## Skip to

↓ [Published Resources](#)

---

## Published resources

### Journal Articles

- Cochrane, P., 'The Wonthaggi Coal Strike, 1934', *Labour History*, vol. 27, Australian Society for the Study of Labour History, Sydney, 1974, pp. 12-30. [Details](#)

[www.atua.org.au](http://www.atua.org.au)



# Historical Societies & Museums

- Google search
- Also try genealogy & family history societies
- Private individuals
  - The Goldminer's Database (NZ)



[Web](#)[Images](#)[Maps](#)[Shopping](#)[More ▾](#)[Search tools](#)[Country: Australia ▾](#)[Any time ▾](#)[All results ▾](#)[Clear](#)[Copperfield - RootsWeb](#)[www.rootsweb.ancestry.com/~auscqfha/district\\_copperfield.htm ▾](http://www.rootsweb.ancestry.com/~auscqfha/district_copperfield.htm)

**Copperfield**. In 1880 the following description of **Copperfield** was given In the Queensland P Office Directory; A **mining** township, four miles distant from Clermont ...

[Copperfield Store and Chimney - Queensland Holidays](#)[www.queenslandholidays.com.au/things-to-.../copperfield.../index.cfm ▾](http://www.queenslandholidays.com.au/things-to-.../copperfield.../index.cfm)

In 1862, a 10 feet high wall of solid copper ore was discovered at **Copperfield**. Queensland's first copper **mine** opened and continued until the 1880's when the ...

[Clermont and Copperfield | Queensland Places](#)[www.queenslandplaces.com.au/clermont-and-copperfield ▾](http://www.queenslandplaces.com.au/clermont-and-copperfield)

Clermont, a former **mining** town of about 1850 people, is 320 km west of Rockhampton and 100 km north of Emerald. It was apparently named after Clermont, ...

[Copperfield, Queensland Australia - Totaltravel](#)[au.totaltravel.yahoo.com/destinations/destination/.../qld/.../copperfield/ ▾](http://au.totaltravel.yahoo.com/destinations/destination/.../qld/.../copperfield/)

**Copperfield** once was a booming township and home to Queensland's first copper **mine**. A must see is the **Copperfield Store** (now the local museum).

[Map of Copperfield Mine in Queensland - Bonzle ... - Bonzle.com](#)[www.bonzle.com](http://www.bonzle.com) > home > mines ▾

The **Copperfield Mine** is a **mine** just off the Clermont Rubyvale Road in south



Sovereign Hill

Gold Museum

Accommodation

Sound & Light Show

Education

Narnbool

Costumed School



### IN THIS SECTION

- What to See and do
- About Us
- Membership
- Media Information
- Visitor Services

For more information, please call 03 5337 1100

ENTRANCE

Main Street

Queen Street

Please click here to download full map

Navigation icons: Information, Currency, Restrooms, First Aid, Parking, Accessibility, Email, Location

[www.sovereignhill.com.au](http://www.sovereignhill.com.au)





# **LIGHTNING RIDGE AUSTRALIA**

## Lightning Ridge Historical Information

[Main Page](#)[Request Information](#)[Disclaimer](#)[Search This Site](#)[Main Page](#)[Main Page](#)[Contacts](#)[1900-1910 Text](#)[1911-1920 Text](#)[1921-1939 Text](#)[1940-1970 Text](#)[1971-2000 Text](#)[2000+ Text](#)[Pictures 1900-1920](#)[Pictures 1921-1930](#)[Pictures 1931-1950](#)[Pictures 1960s](#)[Pictures 1970s](#)[Early Camp Pictures](#)

The Historical Society was formed in 1982 to protect an abandoned miner's hut in the main street of Lightning Ridge. Western Lands declared the block a Crown Reserve, Historical Reserve No. 96499. Today, the hut is maintained as a token to the old timers, and open for inspection most days to locals and visitors

Occupied for forty years by Sid and George Graham, who extended their endless "verandah hospitality", the hut was built in 1932 by Albert Spicer when he struck opal. His son Mal still visits the Ridge and has presented the Society with original photos of his father and their camp at the 3 Mile.

Known today as Heritage Cottage, the hut offers tourist information and select handcrafted items are for sale in an historical setting. The bark dividing walls, dirt floors and kerosene tin chimney are typical of early Ridge architecture. The original wood stove may belt out heat, sending up whiffs of smoke, on a cold winter's morn!



[www.wj.com.au/lrhistory/index.html](http://www.wj.com.au/lrhistory/index.html)

Shauna Hicks Norfolk Island 2014



# GOLDRUSH ONLINE

## THE GOLDMINER'S DATABASE

Search the names of 45000 goldminers from the goldrushes of New Zealand  
Spanning the years 1861 - 1872

New Search

e.g. BROWN, John

Exact match

Wild card

Search

## RECORDS INCLUDED IN THE GOLDMINER'S DATABASE

[Otago Mining Records \(1861 - 1866\)](#)

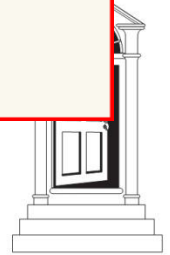
[Thames Mining Records \(1867 - 1872\)](#)

[Explanation of the Record Types in the Database \(First column in the results chart\).](#)

[Notes on the Thames Goldfields and searching the Database.](#)

[Miner's Rights in Thames.](#)

[The Major Goldrushes of the 1800s.](#)





## HOSPITAL SERIES

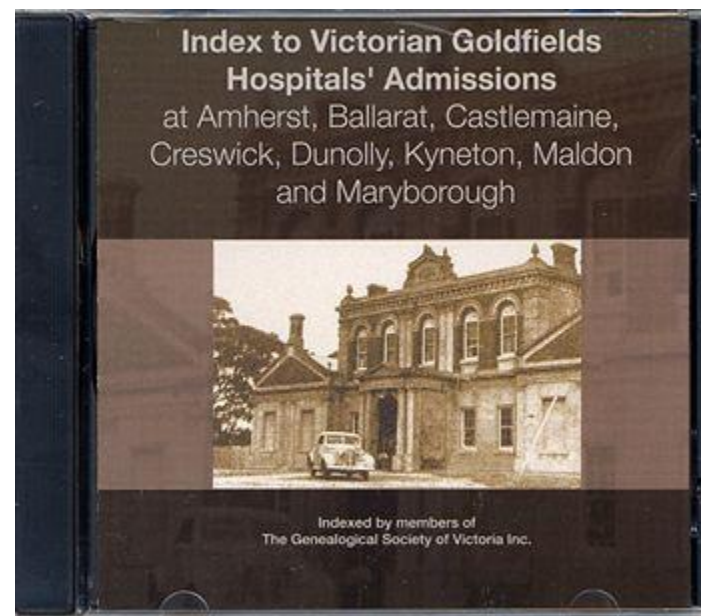
The Victorian Goldfields Hospitals Index: The Hospitals and the Information the Records Contain.

The CD is an amalgamation of indexes to records of the following eight hospitals. They are all admission records, except that which we have called the Kyneton Hospital Family record:

Amherst Hospital 1869-1888  
Ballarat Hospital 1856-1913  
Castlemaine Hospital 1855-1920  
Castlemaine Benevolent Asylum 1860-1922  
Creswick Hospital 1863-1882  
Creswick Hospital outpatients 1873-1877  
Creswick Hospital 1883-1894  
Dunolly Hospital 1860-1900  
Kyneton Hospital Admissions Register 1862-1885  
Kyneton Hospital Family Record 1869-1884  
Maldon Hospital 1864-1905  
Maryborough Hospital 1855-1907

The index comprises ten fields of information: surname; given name(s); admission of patient; patient's place of birth; whether single, married or widowed; occupation; and source.

Various additional information is contained in the records.



## GSV@home

As a member of the Society, some aspects of your research can be done from home. Where possible, the GSV is making this easier by enabling resources and services to be accessed through the Internet or email.

From our home page at [www.gsv.org.au](http://www.gsv.org.au) you can login as a member which takes you to the Members Menu featuring:

### GIN - GENEALOGICAL INDEX OF NAMES

This currently contains over 3 million entries with over 61,000 images or documents attached (mostly relating to Victoria). Records are added on a regular basis. It includes school registers, government gazettes, local histories, hospital records, cemetery records and much more. In some cases links to sources and documents explaining the background of the source and abbreviations, etc are included.

[www.gsv.org.au](http://www.gsv.org.au)

# Miners' Health



- A dangerous occupation
- Accidents (minor, fatalities, disasters)
- Miners phthisis
  - **Anthracosis** \An`thra\*co"sis\, n. (Med.) A chronic lung disease, common among coal miners, due to the inhalation of coal dust; -- called also collier's lung and miner's phthisis.



Series ID	Item ID	Record Type / Description / Departmental Numbers	Start Date	End Date	Digital Images
18309	1028277	<u>Batch file, railway</u>  Miners Phthisis Claim - Alexander Hay  35-217	11/12/1934	11/3/1935	<input type="checkbox"/>
6232	963715	<u>Correspondence</u>  Notice of Question - Miners Phthisis Fund  78/1856	30/5/1978	31/12/1978	<input type="checkbox"/>
7645	275105	<u>Correspondence, mines</u>  Miners phthisis: 1967L; 676L 5 Jan 1910; 676L 26 Jan 1910; 1048L 11 Feb 1910; 1461L 2 Mar 1910; 596L 25 Jan 1910; 877L 4 Feb 1910; 1241L 19 Feb 1910; 639L 27 Jan 1910; 640L 27 Jan 1910; 1220L 21 Feb 1910, cont.	1/1/1910	31/12/1910	<input type="checkbox"/>
14812	86596	<u>Correspondence, police</u>  Miners Phthisis  M1426	1/1/1917	31/12/1917	<input type="checkbox"/>
12353	8881	<u>Register - admissions, hospital</u>  Register of admissions and discharges or deaths at Diamantina Hospital (may be indigents and miners' phthisis cases since included in register of allowances to these recipients of government relief)  2 - 341	1/1/1902	31/12/1907	<input type="checkbox"/>
6303	971253	<u>Register - correspondence, inwards</u>  Treasury Department - Card register of letters received: Stamp dutv	1/1/1978	31/12/1978	<input type="checkbox"/>

[www.archivessearch.qld.gov.au](http://www.archivessearch.qld.gov.au)



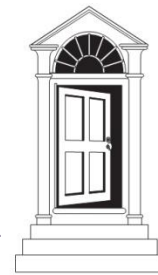




**Diseased and healthy lung (1st of 2)**

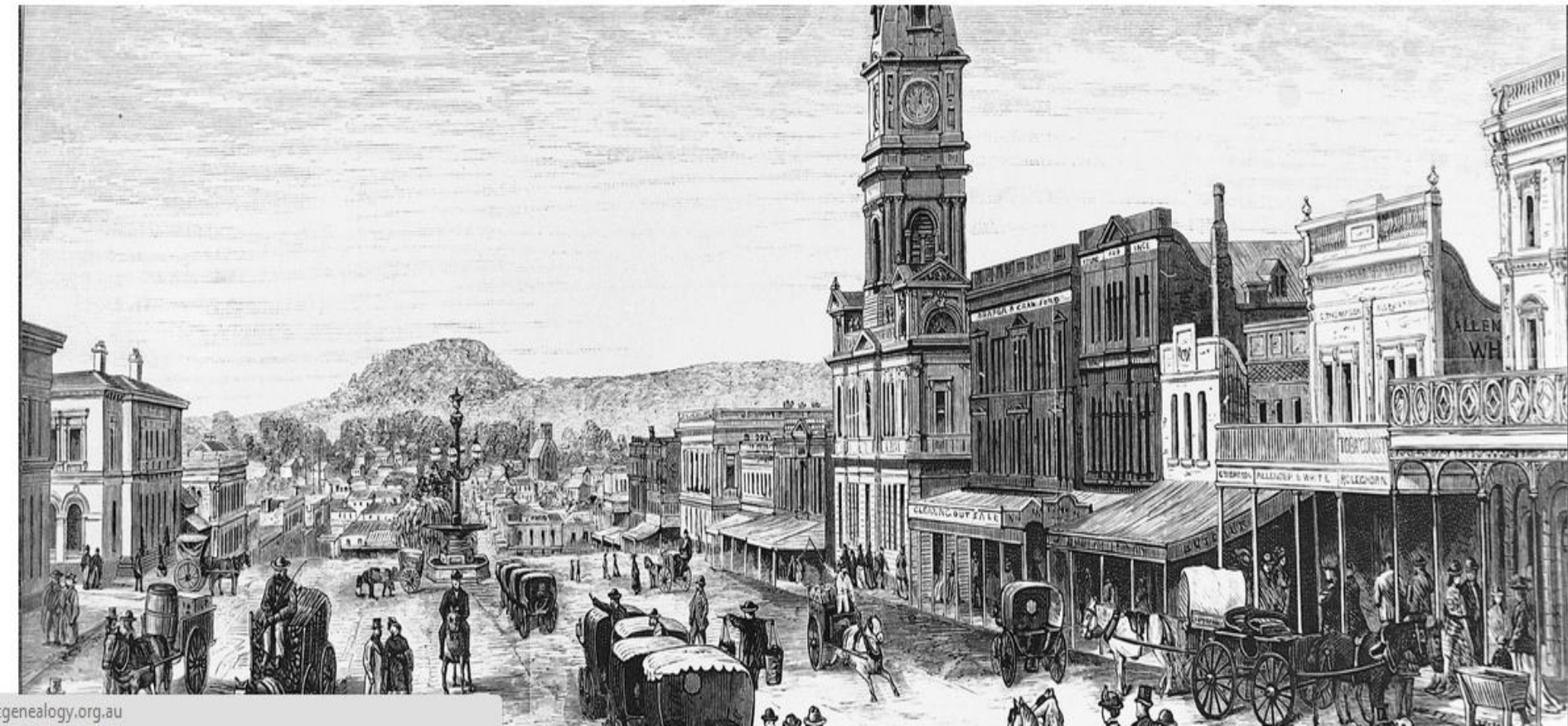
Compare these sections cut from a diseased lung with large cavities (left) and a pink, healthy lung (right). The diseased lung shows a case of miner's phthisis (also known as silicosis) which has led to tuberculosis. Quartz dust is inhaled by miners, and trapped in the lungs causes silicosis making the victim more susceptible to diseases such as tuberculosis and pneumonia.

[www.teara.govt.nz/en/gold-and-gold-mining](http://www.teara.govt.nz/en/gold-and-gold-mining)





# Ballarat & District Genealogical Society Inc



genealogy.org.au



# "Victorian Mining Accident Index"

by - Dave Evans



Welcome to the **Victorian Mining Accident Index** compiled by Dave Evans and presented by the Ballarat & District Genealogical Society. This SAMPLE of Dave's Victorian Index includes ~5600 miners who were killed or injured from the early 1850's to the 1940's. The Index provides details of Miner's Name - Date - Status - Children - Location of Accident - Source (where you can get more information). The index is just a sample of the records, it is not complete and will have some errors. If you know of any miners not listed, or corrections to information, please contact Dave Evans (email below) with the details. Click on any letter below to access names of a sample of the miners killed or injured in mining accidents in Victoria.



**Online Index Sample [Jan 2001]** (Dave has many more since then !)

NOTE : Dave Evans has compiled a CD-ROM on the mining accidents it has over 9100 names [Jan 2005] with much more details on sources and cause of death etc, it is available at \$20.00 plus \$5.00 registered post

**[A](#) [B](#) [C](#) [D](#) [E](#) [F](#) [G](#) [H](#) [I](#) [J](#) [K](#) [L](#) [M](#) [Mc](#) [N](#) [O](#) [P](#) [Q](#) [R](#) [S](#) [T](#) [U](#) [V](#) [W](#) [X](#) [Y](#) [Z](#)**

Mining Accident queries to Dave Evans : [EMAIL](#) or visit Dave's [Mining Records Page](#).

Link to [Source Code Abbreviations](#) used in this index.

Back to : [Ballarat & District Genealogical Society](#)

[www.ballaratgenealogy.org.au/miners.htm](http://www.ballaratgenealogy.org.au/miners.htm)



**A B C D E F G H I J K L M N O P Q R S T U V W X Y Z**

Name	Date	K/I/O	Status	Dep	Comments	District	Division	Source
Rablin, John	1859/00/00	Killed			Fall of earth	Ballarat		(Dig. Evans)
Radcliffe, Thomas	1869/01/07	Injured			***	Ballarat	Nintingbool	(W.Y.H.S.) (PRO)
Radcliffe, Thomas	1886/02/16	Injured	Married, 39 Y. O.			Ballarat	Creswick	(A.R.Sec.Mines)
Radford, R	1875/04/10	Injured			Compo	Castlemaine	Castlemaine	(C.I.R.)
Rafferty, John	1892/07/30	Injured			Compo	Beechworth	Indigo	(A.R.Sec.Mines)
Raffle, William	1862/04/20	Killed	24 Y. O.		Approx Date	Ballarat	Scarsdale	Dickers M. R. (Dig. Evans)
Raglus, Alfred	1883/04/23	Injured			Compo	Sandhurst	Eaglehawk	(C.I.R.)
Rain, John	1875/00/00	Killed	47 Y. O.		Foul air		Melbourne	(Dig. Evans)
Rain, John	1875/00/00	Killed	18 Y. O.		Foul air		Melbourne	(Dig. Evans)
Raine, Joseph	1877/01/11	Killed	Married,	6		Ballarat	Ballarat	(C.I.R.)
Raisbeck, James	1859/00/00	Killed	21 Y. O.		Fall of earth	Castlemaine		(Dig. Evans)
Ramage, Robert	1877/00/00	Killed			Fall of earth	Ararat	Stawell	(Dig. Evans)
Ramage, Robert	1877/10/16	Killed	Married,	1		Ararat	Barkly	(C.I.R.)
Rambank, Joseph	1859/00/00	Killed	21 Y. O.		Fall of earth	Castlemaine	Fryers Creek	(Dig. Evans)
Ramsay, James	1895/02/04	Killed				Ballarat	Ballarat	Ballarat Times Book
Ramsay, Jas	1888/03/09	Injured	Married, 50 Y. O.			Ballarat	Ballarat	(A.R.Sec.Mines)

[www.ballaratgenealogy.org.au/miners](http://www.ballaratgenealogy.org.au/miners)





**Queensland mining accidents  
1882-1901**

## Miners involved in Queensland mining accidents (1882-1900)

---

**Search by surname**[A Surnames](#)[H Surnames](#)[P Surnames](#)[B Surnames](#)[I & J Surnames](#)[Q & R Surnames](#)[C Surnames](#)[K Surnames](#)[S Surnames](#)[D Surnames](#)[L Surnames](#)[T Surnames](#)[E Surnames](#)[M Surnames](#)[U & V Surnames](#)[F Surnames](#)[N Surnames](#)[W Surnames](#)[G Surnames](#)[O Surnames](#)[Y & Z Surnames](#)**About this index**

In the period 1882 to 1900, Queensland mining accidents were listed annually in the *Queensland Legislative Assembly Votes & Proceedings*. This index lists, in alphabetical order by last name, the names of those miners involved and provides details of the accident.

<http://fhr.slq.qld.gov.au/minacc>



# Miners involved in Queensland mining accidents (1882-1900) - surnames beginning with Go-Gu

[Ab-Ai](#) | [Al-An](#) | [Ap-Ay](#) | [Ba](#) | [Be-Bi](#) | [Bl-Bo](#) | [Br](#) | [Bu-By](#) | [Ca](#) | [Ce-Cl](#) | [Co](#) | [Cr-Cu](#) | [Da](#) | [De-Di](#) | [Do-Dw](#) | [E](#) | [Fa-Fi](#) | [Fl-Fy](#) | [Ga-Gl](#) | [Go-Gu](#) | [Ha](#) | [He-Hi](#) | [Ho](#) | [Hu](#) | [I-Je](#) | [Jo-Ju](#) | [K](#) | [La-Le](#) | [Li-Ly](#) | [Ma](#) | [Mc](#) | [Me-Mi](#) | [Mo-Mu](#) | [N](#) | [O](#) | [Pa](#) | [Pe](#) | [Ph-Pu](#) | [Q-Ri](#) | [Ro-Ry](#) | [Sa-Sh](#) | [Si-So](#) | [Sp-Sy](#) | [Ta-Ti](#) | [To-Ty](#) | [U-V](#) | [Wa-We](#) | [Wh-Wi](#) | [Wo-Wr](#) | [Y-Z](#)

Name	Date	District	Name Of Mine	Remarks	Source
Goddard, Thomas	20 Nov 1894	Charters Towers	New Victoria P. C.	Injured. Truck became derailed and tipped up, jamming his hand against the hanging-wall. (Bruised hand)	1895/3/574
Goding, Henry	19 May 1898	Charters Towers	Band of Hope	Killed. Pasing stopes after the shots had been lighted, one exploded and the dislodged stone fell on him. (Crushed)	1899/3/419
Goggin, Wm.	17 Sep 1894	Gympie	South Glanmire and Monkland	Injured. An accidental blow from a windlass handle. (Wound on forehead)	1895/3/574
Golding, William	5 Sep 1894	Charters Towers	Mills United	Injured. When separating mullock and quartz in the stopes, in putting down a large lump of quartz his finger became jammed. (Finger nearly severed)	1895/3/573
Goldsworthy, J. W.	9 May 1895	Charters Towers	Victoria and Queen	Injured. By bow of kibble on the brace. (Lost tip of forefinger)	1896/4/147

<http://fhr.slq.qld.gov.au/minacc>



# Photographs & Newspapers

- Trove
  - But remember not everything is in Trove!
- State Libraries & Archives
- University Archives
- Historical Societies & Museums
- Flickr



**IN MEMORIAM.**

PRICE—In sad and loving Memory of my dearly beloved husband, **Thomas Price**, accidentally killed at **Bal-lara** on **June 16th, 1918.**

Oh, for the touch of a vanished hand,  
And the sound of a voice that is still

(Inserted by his sorrowing Wife,  
**Elizabeth Price**)

PRICE—In loving Memory of our dear father and grandpa, **Thomas Price**, accidentally killed at **Bal-lara** on **June 16th, 1918.**

(Inserted by his loving Son and Daughter-in-law, **George and Maggie Price**, and Granddaughter, **Thelma**)

Townsville Daily Bulletin (Qld. : 1885 - 1954) (about) ◀ Wednesday 16 June 1920 ▶

**John Trevaskis** has been killed in the monkey shaft of the **Day Dawn Gold Mine** at **Charters Towers (Q.)**, through a truck being accidentally pushed into the shaft. It fell upon **Trevaskis** who was **50ft** below.

Western Champion (Parkes, NSW : 1898 - 1934) (about) ◀ Friday 26 January 1906 ▶

**FATAL MINING ACCIDENT.**

**CHARTERS TOWERS, Jan. 18.**—**John Trevaskis** was killed in the monkey shaft of the **Day Dawn Gold Mines** to-day. A bracceman accidentally pushed a truck into the shaft, and it fell on **Trevaskis**, who was **50ft. below**, and killed him.

The Brisbane Courier (Qld. : 1864 - 1933) (about) ◀ Friday 19 January 1906 ▶

**KILLED IN A SHAFT.**

**Brisbane, Saturday.**

**John Trevaskis** was killed yesterday in **Monkey shaft** on the **Day Dawn mine, Charters Towers.** The bracceman accidentally pushed a truck into the shaft, and it fell on **Trevaskis**, **50ft. below.**

Barrier Miner (Broken Hill, NSW : 1888 - 1954) (about) ◀ Saturday 20 January 1906 ▶



# NEW GYMPIE MINES

## Company Registered

### SECRETARY RETICENT

The registration of the New Gympie Mines, Ltd., owners of a promising mine in the Wowan district, was finalised on Saturday morning. Favourable reports from the mine and a visit of three directors of the company to Gympie last week are believed to have been responsible for this action being taken.

When questioned on the matter on Saturday morning, Mr. R. E. Hartley, secretary of the company, said he had no statement to make other than that the company had been registered. He also admitted that he had despatched a telegram to all syndicate shareholders, reading: "Important developments. Company registered. Advise declining all offers our syndicate shares."

The New Gympie, which was formerly known as the Kewpie, is situated off Pheasant Creek, about 15 miles from Wowan. The company holds a mining lease of 60 acres.

Last year a crushing from the mine gave a return of over 4 ozs. to the ton. An enlargement of the company followed, and this year the working staff was increased from one to four under Mr. W. Rowe as working manager. Further developments are expected shortly.

The shareholders in the company are William Rowe, Denis Bill, Charles H. Murphy, John Joseph Booker, M. Roxburgh, F. Kelly, H. T. French, J. T. M'Mullep, D. P. Carey, L. T. Palmer, R. E. Hartley, E. M. Hockings.

Morning Bulletin (Rockhampton, Qld. : 1878 - 1954) about [Monday 3 August 1931](#)

## NEW COMPANY.

Potters Mine, N.L.; registered February 9; capital £12,000 in £1 shares. Subscribers, A. W. E. Weaver, E. R. ter, H. Burton, W. Felton, J. L. Purves, J. Ryan and C. I. Watt; manager Percy G. Pring. Registered office, Equitable Buildings, George-st. Place of operations, near Condobolin. This is one of the best paying concerns in the Condobolin district, and for many years was worked by Mr. Potter privately.

Leader (Orange, NSW : 1912 - 1922) about [Thursday 18 February 1915](#)

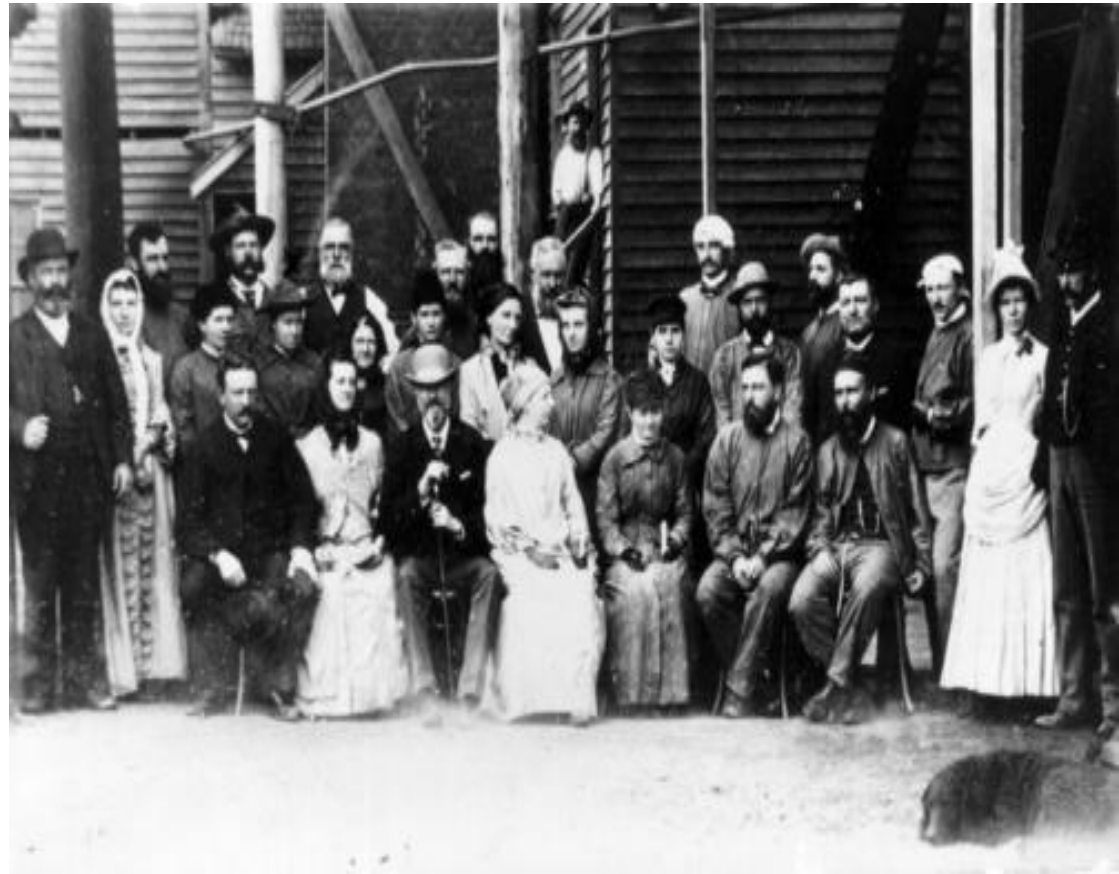






J B Atkinson, Gympie 1897  
Images John Oxley Library

Visit of Sir Anthony & Lady Musgrave  
North Phoenix Mine Gympie 1888



Christoe St, Copperfield 1876  
Images John Oxley Library







Quart Pot Hotel, Stanthorpe  
1872  
Image John Oxley Library

Schoolchildren 1873  
Stanthorpe State School  
Image John Oxley Library



Images John Oxley Library



Cradling for gold outside  
Charters Towers



Workers outside St  
Patrick Extended  
Charter Towers ca 890



Favorite Actions Share

Newer Older



By the\_ferret Jonathan Stitts + Add Contact

This photo was taken on November 1, 2008 in Walgett, New South Wales, AU, using a Canon EOS 350D Digital.



240 views

This photo belongs to

the\_ferret's photostream (1,199)



This photo also appears in

- Big Trip (set)
Big Trip (group)
Flickr Australia (group)

Tags

Lightning Ridge - opal mine tunnel

Lightning Ridge is full of small opal mines - people move there, stake a claim and start digging. This mine is no longer active, but open for tourists to explore.

For more info see the Lightning Ridge entry on the Big Trip website.

http://www.flickr.com

# Conclusion

- Follow the gold (don't forget other minerals too)
- Most records are not indexed
- Not everything has survived
- Have fun & good luck!

