

Tracing Your Cornish Mining Ancestors in Australia

Shauna Hicks

www.shaunahicks.com.au

www.shaunahicks.com.au/shhe-genie-rambles

<http://diaryofanaustraliangenealogist.blogspot.com>

Twitter: HicksShauna

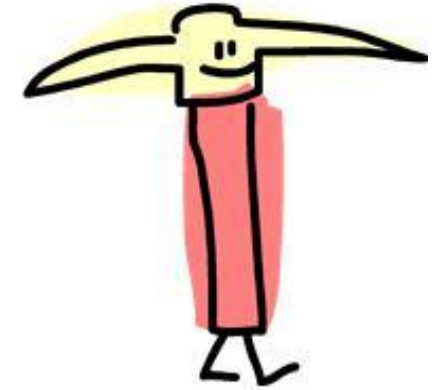


Introduction

- ▶ Background history for context
- ▶ Publications
- ▶ Archives & Libraries
- ▶ Websites
- ▶ Miners' Health Issues
- ▶ Photographs



Background History



- Miners moved around
- Major mining rushes (they followed new discoveries)
 - South Australia 1840s
 - Victoria & NSW 1850s
 - Queensland 1860s
 - Western Australia 1890s
- Don't forget the trans Tasman connection



A Chronology of Australian Mining

Other significant dates since then relating to the history of minerals in Australia include:

1848 - *Discovery of lead in the bed of the Murchison River, W.A.*

1851 - *Discovery of gold at Clunes, Castlemaine and Ballarat which began the Victorian goldrushes*

1852 - *Payable gold discovered at the Nook, near Fingal, and at Nine Mile Springs (Tasmania). Gold also discovered at Gulgong (NSW) and at Beechworth, Daylesford and Ovens River (Vic)*

1853 - *Riots on Ballarat Goldfields (Vic). Storming of the Eureka Stockade on 3rd February 1854.*

1857 - *Brown coal discovered at Lal Lal in Victoria. Gold discovered at Adelong (NSW).*

1858 - *Australia's population reaches one million. Gold discovered at Avoca (Vic) and Canoona (Qld)*

1859 - *Copper recognised in the Cobar area of New South Wales.*

1860 - *Copper discoveries at Wallaroo and Moonta (SA). Gold discovered at Young (Lambing Flat in NSW).*

1862 - *Gold discovered at Forbes (NSW). Also a copper-rich lode found at Clermont (Qld).*

1863 - *Gold discovered at Walhalla (Vic) and Warwick (Qld).*

1864 - *Coal discovered in Greta-Cessnock-Maitland field (NSW); principal Australian source of gas coal. Blair Athol coal field (Qld) found; seam is 90ft thick.*

1866 - *Gold discovered at Rockhampton (Qld).*

1867 - *Gold discovered at Gympie (Qld).*

1868 - *Gold discovered at Ravenswood (Qld).*

**Publishers of Educational
Books and Software**

www.readyed.com.au/Sites/minehist.htm

Shauna Hicks
History Enterprises





Image Gallery



BHP Mine
Broken Hill

South Australia's Mining History

1840-1920: Copper

The first metal mine in Australia, Wheal Gawler at Glen Osmond, commenced operations within sight of Adelaide in 1841. However it was the mining of copper ores at Kapunda (1844) and Burra (1845), which aroused widespread interest in metal mining in South Australia and caused the first major decentralisation from Adelaide. Cornish miners and their families poured into South Australia to take part in the great copper boom. They brought with them their mining expertise to help extract the rich ore that gave South Australia the title of *The Copper Kingdom* by virtue of mines of world significance.

By 1850, South Australia was the third largest copper producer in the world and its mines had added financial stability to an almost bankrupt colony. These mineral deposits had a profound effect on settlement in the new colony. Land was surveyed for mineral tenements, mining townships and agricultural purposes. Basic road networks were established during this period to cart ore to Port Adelaide for shipment to Wales, and to deliver heavy machinery to the mines.



South Australia's importance as a copper producer was maintained with further discoveries at Wallaroo in 1850 and Moonta in 1861. These mines were on large, rich deposits and were worked continuously for

Links

- [NSW Mining History](#)
- [NT Mining History](#)
- [Queensland Mining History](#)
- [SA Mining History](#)
- [Tasmania Mining History](#)



Tasmania's Mining History: A bibliography

General

- Anon., 'Mineral rich regions of Australia', Part 1: Tasmania's Mt Read volcanics. Part 2: The Pilbara region of Western Australia: more than iron ore and gas', in *Johnny Green's Journal*, vol. 9, no. 4, April 1989, pp. 15–18, vol. 10, no. 3, January 1990, pp. 6–10.
- Aubrey, Michael, 'A history of mining exploration starts to pay off: Tasmania', in *Miner*, Darlinghurst, NSW, November 1989, pp. 10–11.
- Blainey, Geoffrey, 'The rise and decline of the West Coast', in Tasmanian Historical Research Association, *Papers and Proceedings*, vol. 4, 1960, pp. 66-74.
- Burton, B., 'Undermining Tasmania: a research paper on the mining industry', Wilderness Society, Hobart, 1989.
- Dickens, Greg, *Mining in Tasmania - a brief history*, Tasmania Geological Survey Record 1995/11, Mineral Resources Tasmania, Hobart, 1995.
- Donovan and Associates, *A Mining History of Australia*, Donovan & Associates History and Historic Preservation Consultants, Blackwood, SA, 1995.
- Fenton, James, *A History of Tasmania from its Discovery in 1642 to the Present Time*, J. Walch and Sons, Hobart, 1884.
- Gaughwin, Denise, 'Trade, Capital and the Development of the Extractive Industries of Northeast Tasmania', in *Australasian Historical Archaeology 10*, 1992 [published 1994], pp. 55–64.
- Hills, Loftus, 'The progress of Geological Research in Tasmania Since 1902', in *Proceedings of the Royal Society of Tasmania*, 1921, pp. 111-146.
- Hogg, E.G., 'The Magnetic Survey of Tasmania', *Proceedings of the Royal Society of Tasmania*, vol. 117, 1983, pp. 81-88.

Bibliography of Australian Mining History

Minerals

Copper

Gold

Iron

Silver and Lead

Tin

- Anon., 'Tin mining at Mount Cleveland', in *Australian Trader*, vol. 7, September 1970, p. 55.
- Blackaby, Narelle, *Rossarden, Echo of the Mountain*, self-published, Canberra, 2004.
- Cochrane, G.W., *Tin deposits of Victoria*, Bulletin of the Geological Survey of Victoria, no. 60, Department of Mines, Melbourne, 1971.
- Crowther, Edward Lodewyk, *Journal of Prospecting in Gould's Country, N.E. Tasmania, 1875-76, 19?*

www.mininghistory.asn.au

Gold in Victoria

VIC



PLACE NAME CHANGES

Ballaarat => Ballarat
Bendigo => Sandhurst => Bendigo
Charlton => Chute
Delhi => Maryborough
Fiery Creek => Beaufort
Four Mile Flat => Avoca
Indigo => Chiltern
McIvor => Heathcote
Mt Alexander => Castlemaine
Mt Korong => Wedderburn
Mt William => Ararat
Ovens Goldfield => Beechworth
Simson => Maryborough
Tarrngower => Maldon
Upper Ovens => Buckland River
Warrandyte => Andersons Creek

<http://familyhistoryresearch.com.au/resources/VicGold.pdf>

TIMELINE

- 1836 Port Phillip District (Victoria) opened for settlement, governed by NSW
- 1840 Count Paul de Strezelecki reported gold discovery in Victorian Alps
- 1845 Gold found at Ballarat
- 1847 Melbourne jeweller bought apple shaped piece of gold from shepherd
- 1848 Another jeweller bought gold from Thomas Chapman, starting rush in 1849
- 1849 Many left for Californian goldfields
- 1850 Squatter William Campbell found gold at Clunes & later received government reward
- 1851 Hargraves found gold near Bathurst, causing 1st NSW gold rush - exodus of people from Melbourne to Sydney
- June 1851 Committee offered £200 reward for discovery of payable gold within 200 miles from Melbourne
- 1 July 1851 Colony of Victoria separated from NSW
- July 1851 Gold found at Clunes, Anderson's Creek (Warrandyte) & Mt Alexander (Castlemaine) beginning rushes
- Aug 1851 Gold found at Daylesford & Buninyong, opening up Ballarat goldfield rush
- 1 Sep 1851 Edict: No person in Victoria permitted to dig, search for, or remove gold on public or private, without first taking out & paying for a gold licence
- 19 Sep 1851 1st Ballarat gold commissioner arrived, announcing new regulations. An suggested, but diggers, eager to get to work, quickly paid their 30 shillings/month
- Oct 1851 Gold discovered at Bendigo
- May 1852 Eureka Lead at Ballarat East gold field discovered
- 14 Aug 1852 Miners dispute at Bendigo escalated to riot involving more than 150. Calls
- 1852/1853 Many new gold areas discovered
- 13 Jun 1853 Diggers at Bendigo protest licence fee, sign petition
- 28 Jul 1853 Anti-licence meeting held at Castlemaine, suggested British flag be replaced

KEY WEB SITES

ANU Gold Documents (from Victorian newspapers) – www.anu.edu.au/andc/res/aehist/gold/index.php
Australian National Maritime Museum – <http://www.anmm.gov.au/site/page.cfm?u=893>
Australian Newspapers (beta) <http://ndpbeta.nla.gov.au/ndp/del/home>
Aus-Vic-Goldfields (Rootsweb list) – <http://lists.rootsweb.com/index/intl/AUS/AUS-VIC-GOLDFIELDS.html>
Ballarat & District Genealogical Society Inc – www.ballaratgenealogy.org.au
Bendigo Goldfields Petition 1853 – www.slv.vic.gov.au/collections/treasures/bendigopetition/
eGold Electronic Encyclopedia of Gold in Australia – www.egold.net.au
Eureka! The Rush for Gold – www.sl.nsw.gov.au/discover_collections/history_nation/gold/index.html
Helen Doxford Harris website – <http://members.ozemail.com.au/~hdharris/>
Heritage Council, Golden Heritage – www.heritage.vic.gov.au/Learning-education/Victorian-Goldfields.aspx
Ian Potter Museum (Gold & impact on cultural life) – www.art-museum.unimelb.edu.au/victorian_gold/
National Library of Australia Digital Collections – www.nla.gov.au/digicoll/
Newspapers from the Central Victorian goldfields – www.csu.edu.au/research/jcentre/reports/report198.pdf
Public Record Office of Victoria – www.access.prov.vic.gov.au/public/PROVguides/PROVguide023/PROVguide023.jsp
Some records are held at Ballarat Archives Centre & some in North Melbourne.
Royal Historical Society of Victoria – www.historyvictoria.org.au
SBS GOLD! – www.sbs.com.au/gold/
Society of Australian Genealogists – www.sag.org.au
Times (London) – www.sl.nsw.gov.au/databases/athome.cfm
Victoria Government Gazettes (1836-present) – <http://gazette.slv.vic.gov.au>
Victorian Births, Deaths & Marriages – <http://online.justice.vic.gov.au/ots/home>
Victorian Cemeteries online – www.coraweb.com.au/cemetaus.htm#vic
Also www.ozgenonline.com/aust_cemeteries/vic/index.htm
Victorian Collection of Historical photographs – www.nre.vic.gov.au/virtualexhibition/Mines/Index.htm
Victorian Divorce Index 1861-1900 – www.macbeth.com.au/indexes/divsearch.html
Victorian Index to Divorce Cause Books 1861-1924 – www.prov.vic.gov.au/publications/documents/05335-P0.asp
Victorian Place Names Index – www.australiagenweb.org/archive/vicplacenames.php
Victorian Rural Cemetery records (1836-1988) on Ancestry – www.ancestry.com.au/search/db.aspx?dbid=1266
Victorian State Library – www.slv.vic.gov.au (see also *Electronic genealogy resources & Rare Manuscripts online*)



LIGHTNING RIDGE

[About Lightning Ridge](#)

[About opal](#)

[Mining overview](#)

[Code of Conduct](#)

[Opal prospecting](#)

[Mineral Claims](#)

[Maps, reports & records](#)

[Mining Courses](#)

[Landholders information](#)

[Forms](#)

[Land and Environment Court](#)

Mining overview at Lightning Ridge

▼ [Mining History](#)

▼ [Mining Methods](#)

▼ [Opal Processing](#)

The black opal mined at Lightning Ridge is a unique and highly valued gemstone. It is generally found at 6 to 18 m below ground level in the deeply weathered claystone layer of the Griman Creek Formation of Early Cretaceous age. This forms a distinct layer below the overlying sandstone and conglomerate of Tertiary age.

Opals at Lightning Ridge are found in two forms: rounded nodules, termed 'nobbies'; or in seams. The opal bearing material is a soft greyish claystone often referred to as 'opal dirt'. Opal is generally extracted by underground mining and a typical mining operation involves sinking a vertical shaft and driving horizontal shafts, or 'levels', to obtain opal dirt. Some open cut mining is also undertaken in the area.

In areas where opals are found as 'nobbies', opal dirt is brought to the surface where it is transported by truck to a puddling site for processing. Methods for processing the opal dirt typically include wet (or sometimes dry) puddling techniques usually by mechanical means. This puddling breaks up the claystone, the finer portion of which is then discarded, leaving rock materials which are further examined and hand sorted to identify individual nobbies.

In areas where opals are found in seams, gemstones are usually recovered at the working face of the mine.

Mining generally occurs along defined low ridgelines (so called 'ridge country') where the opal bearing material is closer to the surface. There are more than 200 distinct opal fields that occur on the 'ridge country'. These opal fields may be isolated or occur in groups. The main opal field "groups" located at Lightning Ridge are; Coooran, Grawin/Carters, Glengarn/Sheepyards, Wyoming, Jag Hill and Mehi.

Opal Mining History in NSW

- ◊ **1873** - Robert Moore made the first record of pretty coloured stones from Lightning Ridge.
- ◊ **1877** - Mining for precious opal in igneous rocks began at Rocky Bridge Creek, a tributary of the Abercrombie River, in the central west.
- ◊ **1881** - Opal was discovered at Milparinka, near Tibooburra in the far west.
- ◊ **1884** - Opal was discovered in sedimentary rock at White Cliffs in the far west.
- ◊ **1889** - Precious opal was discovered at White Cliffs.
- ◊ **1880s or 1891** - Opal was discovered in sedimentary rock at Lightning Ridge (Wallangulla) and other localities in the area, but its commercial value is not recognised.
- ◊ **1890** - Precious opal mining began at White Cliffs (continuing to 1915 then going into decline).
- ◊ **1896** - Opal was discovered at

www.dpi.nsw.gov.au/minerals/lightning-ridge/mining-overview



Publications

- ▶ Shauna Hicks monthly series in *Australian Family Tree Connections*
- ▶ *Wikipedia*
- ▶ *Dead Reckoning: A Guide to Family History Research in WA*
- ▶ Genealogical Society of Victoria – *Index to Victorian Goldfields Hospitals' Admissions*
- ▶ Tom & Libby Luke CDs various titles





WIKIPEDIA
The Free Encyclopedia

Article **Discussion**

Read **Edit** View history

Search

Mining in Australia

From Wikipedia, the free encyclopedia



This article's **lead section may not adequately summarize its contents**. Please consider expanding the lead to **provide an accessible overview** of the article's key points. *(September 2010)*

Mining in Australia is a significant **primary industry** and contributor to the **Australian economy**. Historically, mining booms have also encouraged **immigration to Australia**. Many different ores and minerals are mined throughout the country.

Contents [hide]

- 1 History
 - 1.1 Gold rushes
- 2 Mining
 - 2.1 Minerals and resources
 - 2.2 Mining regions
 - 2.3 Coal mining
 - 2.4 Uranium mining
 - 2.5 Natural Gas
- 3 Economics
- 4 Technology and services
- 5 Lifestyle
- 6 Environment and politics
- 7 Mining disasters
 - 7.1 New Australasia Gold Mine
 - 7.2 Mount Kembla
 - 7.3 Balmain Colliery



Super Pit gold mine at Kalgoorlie in Western Australia is Australia's largest open-pit mine

http://en.wikipedia.org/wiki/Mining_in_Australia

Shauna Hicks
History Enterprises





Search for ...

All our websites

Our Catalogue

Go to whole of WA Government search

Dead Reckoning

How to find your way through the genealogical jungle of Western Australia

Dead Reckoning

How to Begin

The Battye Library

Books

Serials

Other Material

Private Archives

Indexes and

Catalogues

State Records Office





Archive Accessioning
Systems

Government Archival
Records

Other Australian
States and Overseas

Further Sources

Abbreviations

Share this page    

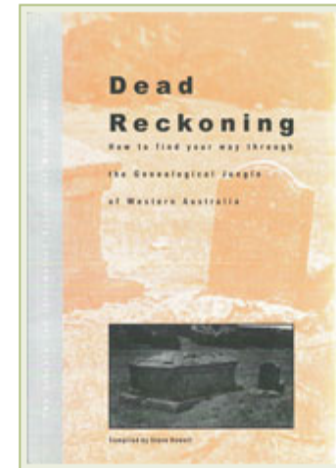
Dead Reckoning: a guide to family history research in WA

If you are a novice family historian just starting out tracing your family tree or an experienced genealogy researcher looking for whatever happen to the elusive great uncle. Dead Reckoning is your handbook to family history research in Western Australia.

Dead Reckoning: how to find your way through the Genealogical Jungle of Western Australia (compiled by Steve Howell) was first published in 1997. It was an update of the 1983 Library Board of Western Australia publication: [Tracing your ancestors: a guide to genealogical sources in the J.S. Battye Library of West Australian History](#).

Since 1997, the Battye Library and the State Records Office have received new material of interest to anyone undertaking genealogical and biographical research. As well, many relevant internet resources have been developed. Following a grant from the Sholl Bequest (administered by the Friends of Battye Library Inc.), it was decided to revise and publish the book online, so it can be regularly updated as appropriate resources and material are found.

The online publication is divided into various sections. The first section covers how to begin, legal deposit, copyright,



www.slwa.wa.gov.au/dead_reckoning

Shauna Hicks
History Enterprises





Search for ...

All our websites

Our Catalogue

Go to whole of WA Government search

Dead Reckoning

How to find your way through the
genealogical jungle of Western Australia

Indexes and Catalogues: A-M

- Arrivals
- Biographical
- Births, Baptisms, Deaths, Burials & Marriages
- Cemeteries
- Colonial Secretary's Office
- Correspondence
- Convicts
- Inquests
- Land Owners
- Members Interests Directories
- Military
- Mining Lease Holders**

[Dead Reckoning](#) > [Indexes and Catalogues](#) > [A-M](#) > [Mining Lease Holders](#)

printer friendly

Share this page

Mining Lease Holders

[Mining lease holders names 1 January 1892 to 31 December 1909 \[microform\].](#)

Bayswater, W.A. : Western Australian Genealogical Society, [1996].
[929.39 MIN]

This is a microfiche index of mining lease holders 1892-1909. It has been taken from a Mines Department Nominal Index to Mining Tenements ([CONS 4603/6 - Record Series 1028](#)) and provides the name of the lease holder, lease number, goldfield and date of lease holding.

Page last updated: Tuesday 23 November 2010

www.slwa.wa.gov.au/dead_reckoning/indexes_and_catalogues/a-f2/mining_lease_holders



HOSPITAL SERIES

The Victorian Goldfields Hospitals Index: The Hospitals and the Information the Records Contain.

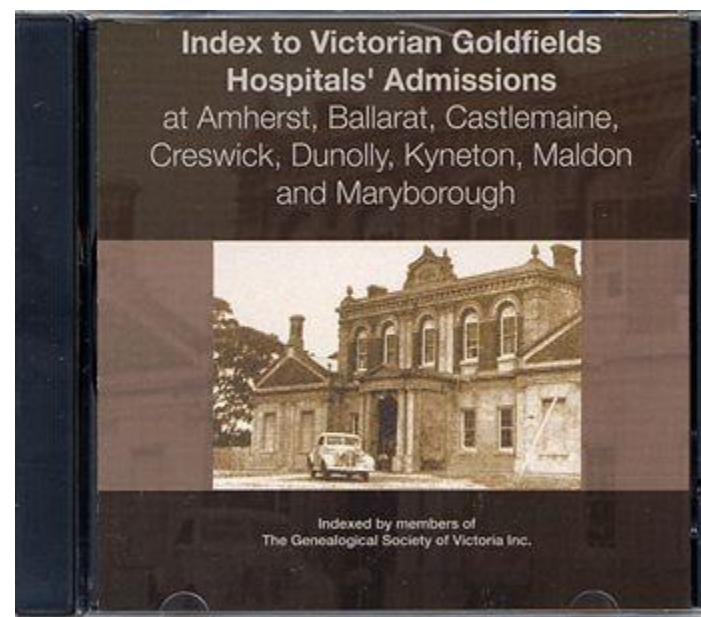
The CD is an amalgamation of indexes to records of the following eight hospitals. They are all admission records, except that which we have called the Kyneton Hospital Family record:

Amherst Hospital 1869-1888
Ballarat Hospital 1856-1913
Castlemaine Hospital 1855-1920
Castlemaine Benevolent Asylum 1860-1922
Creswick Hospital 1863-1882
Creswick Hospital outpatients 1873-1877
Creswick Hospital 1883-1894
Dunolly Hospital 1860-1900
Kyneton Hospital Admissions Register 1862-1885
Kyneton Hospital Family Record 1869-1884
Maldon Hospital 1864-1905
Maryborough Hospital 1855-1907

The index comprises ten fields of information: surname; given name(s); admission of patient; patient's place of birth; whether single, married or widowed; occupation; and source.

Various additional information is contained in the records.

www.gsv.org.au



GSV@home

As a member of the Society, some aspects of your research can be done from home. Where possible, the GSV is making this easier by enabling resources and services to be accessed through the Internet or email.

From our home page at www.gsv.org.au you can login as a member which takes you to the Members Menu featuring:

GIN - GENEALOGICAL INDEX OF NAMES

This currently contains over 3 million entries with over 61,000 images or documents attached (mostly relating to Victoria). Records are added on a regular basis. It includes school registers, government gazettes, local histories, hospital records, cemetery records and much more. In some cases links to sources and documents explaining the background of the source and abbreviations, etc are included.

**Kangaroo Flat Cemetery Bendigo : photographs of headstones /
[compiled by Tom and Libby Luke]**

Luke, Tom

[Book : 2006]

Keywords: Epitaphs - Victoria - Kangaroo Flat.; Kangaroo Flat Cemetery.; Sepulchral monuments - Victoria - Kangaroo Flat.

At 4 libraries

<http://trove.nla.gov.au>

**White Hills Historic Cemetery Bendigo : photographs of headstones /
[compiled by Tom and Libby Luke]**

Luke, Tom

[Book : 2005]

Keywords: White Hills Historic Cemetery (Bendigo, Vic.); Epitaphs - Victoria - Bendigo.; Bendigo (Vic.) - Genealogy.

At 2 libraries

**White Hills Historic Cemetery Bendigo : monumental inscription
photographs / Compiled by Tom and Libby Luke**

Luke, Tom

[: 2005]

Keywords: White Hills Cemetery (Bendigo, Vic.); Cemeteries - Victoria - Bendigo.; Victoria - Genealogy.

At LaTrobe Uni Bend

**Moonta Historic Cemetery South Australia : photographs of headstones /
[compiled by Tom and Libby Luke]**

Luke, Tom

[Book : 2005]

Keywords: Epitaphs - South Australia - Moonta.; Moonta Cemetery (S. Aust.); Cemeteries - South Australia - Moonta.

At State Library of VIC

**Mount Alexander goldfields, southern cemeteries : monumental
inscription photographs : Fryerstown, Guildford, Vaughan / compiled b
Tom and Libby Luke**

Luke, Tom

[Book : 2006]

Keywords: Epitaphs - Victoria - Fryerstown.; Fryerstown (Vic.) - Genealogy.; Mount Alexander (Vic. : Goldfield) - Genealogy.

At 2 libraries

**Towaninnie Public Cemetery Victoria : photographs of headstones /
[compiled by Tom and Libby Luke]**

Luke, Tom

[Book : 2006]

Keywords: Epitaphs - Victoria - Towaninnie.; Towaninnie Public Cemetery (Towaninnie, Vic.); Registers of births, etc. - Victoria - Towaninnie.

At State Library of VIC

**From Burra to Bendigo 1852 : the story of the tenacity of the "Cornish
miners" and the "Ninnes Lonely Grave of Maiden Gully" / compiled by
Tom and Libby Luke**

Luke, Tom

[: 2006]

Keywords: Cornish - South Australia - Burra.; Burra (S. Aust.) - History.; Gold mines and mining - Victoria - Bendigo - History.

At LaTrobe Uni Bendigo

Archives & Libraries

- ▶ State – Fact Sheets, Published Guides, Online Catalogues (inter library loans)
- ▶ Specialist
 - Bendigo Regional Archives Centre
- ▶ University
 - Noel Butlin Archives Centre
- ▶ Trade Union Archives



State Library collections

e-resources

SLQ collections + e-resources

mining and history

All South Bank Collections

Search

Advanced search

Refine your search:

Books

that contain my query words

anywhere in the record

Did you mean: china and history?

Show only

Full Text Online (3)

Available in the Library (513)

Refine my results

Subject

Gold mines and mining (274)

Mines and mineral resources (62)

Australia (60)

Coal mines and mining (47)

Victoria (25)

Show 15 more

523 Results for All South Bank Collections

sorted by: Relevance

1-10 Next

Show only Full Text Online (3) | Available in the Library (513)



The Gold rushes

W. P. Morrell (William Parker), 1899-
London : Adam and Charles Black 1940
Available: Open access, level 4 (J 994.03 mor)

This is 1 of 2 versions of this work

Request Locations Details Reviews & Tags More



The rush that never ended : a history of Australian mining

Geoffrey Blainey 1930-
Parkville, Vic. : Melbourne University Press 1963
Available: If available, request & collect from level 4 (J 622.0994 bla) and

<http://onesearch.slq.qld.gov.au>



Mining Records

Queensland State Archives holds an extensive collection of records of the Mines Department and the Mining Warden's Offices throughout the State. They relate to the development and government administration of the Queensland mining industry since separation. The mining industry has always played a significant role in the Queensland economy and a large proportion of the population of Queensland was employed in the mining industry prior to World War I. Research of mining records is time-consuming because of the large number of departmental indexes and the fragility of the registers and plans. Photocopying of registers is not permitted because of possible damage to the original binding. Some early press copy letterbooks are too fragile to be re-opened and are therefore closed to public access.

There are separate series of records for the three types of mining - gold, coal and base metals - as specified in the Mining Act and the Coal Mining Act. Mining records are accessioned under the general headings:-

MINES DEPARTMENT
GOLD COMMISSIONER (before 1874)
MINERAL LANDS COMMISSIONER (1872 - 1898)
MINING WARDEN (from 1874)
INSPECTOR OF MINES
MINING REGISTRAR AND ASSISTANT MINING REGISTRAR

Miners' Homestead Leases

Brief Guide 48

The Gold Fields Homestead Act of 1870 encouraged gold miners and others to become permanent residents on the gold fields of Queensland. From 1 March 1871 it repealed the *Gold Fields Towns Lands Act of 1869* and enabled any holder of a miner's right, business license or gold mining lease (or any other authorised adult resident) to make application for a lease of land on a proclaimed gold field. The applicant must have been resident on the field for not less than six months and the application had to be lodged at the office of the Commissioner in charge of the gold field. The area applied for was not to exceed 40 acres. An Application Book was to be kept at the office of the Gold Commissioner on every proclaimed gold field. The number of applicants was restricted to one hundred on each field and leases were transferable. Any miner with a valid miner's right was able to search for gold on the land.

An amendment to the Act in 1880 enabled any holder of a miner's right to apply for a lease not exceeding a quarter of an acre within the limits of a township for residence or business purposes. This amendment also directed that all rents and revenue from the leases be paid to a special fund to be expended on roads, bridges and other public works on the respective goldfields under the superintendence of the relevant local authority.

The Gold Fields Homestead Leases Act of 1886 repealed the previous acts. It changed the areas of proposed leases: leases could be up to half an acre within township limits, five acres within two miles of the town boundaries and forty acres beyond two miles.

The Mineral Homestead Leases Act of 1891 authorised the issue of Homestead Leases in Mining Districts (i.e. for mining other than gold), on terms which were the same as for the Gold Fields Homestead Leases.

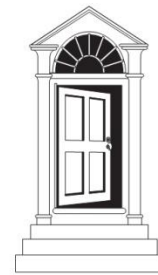
Index to Mineral Leases 1871-1940

This Index was created from several series of records created by the Mines Department and the Mining Warden, Cloncurry. The majority of these records are the printed lease documents with identifying information completed by hand.

Background

1. **Series ID 18221 (MIN/N1-48), Gold mining leases** dated 1/8/1871 - 31/7/1919. Details given include name(s) of applicant(s) for lease, where they were from, yearly rent payable, Act under which lease was granted, where the lease was situated (name of goldfield), area of land, term (in years) and date of commencement of lease, minimum number of miners to be employed, county and parish, description and sketch map of boundaries of lease, transfers (date and to whom).
2. **Series ID 18222 (MIN/O1-56), Mineral leases** dated 21 Jan 1884 - 11 Oct 1940. Details given include name(s) of applicant(s) for lease, where they were from, mineral sought, yearly rent payable, district where the lease was situated, area of land, term (in years) and date of commencement of lease, description and sketch map of boundaries of lease, transfers (date and to whom).
3. **Series ID 7367 (A/20586), Index to Coal Mining Licence Register under the Act of 1886** dated 12/1/1888 - 23/7/1954. This record is an Index to coal mining licence register under the Minerals Lands (Coal Mining) Act of 1886. Details include licence number, name and folio number. Folio numbers from 299 - 590 provide access to [Series ID 17138 \(B1265\), Register of Coal Prospecting Licences](#) dated 12/1/1888 - 23/7/1959. [Please note this item (B/1265) is not included in the Mineral Leases 1871-1940 Index].
4. **Series ID 9132 (A/45843), Mineral and Water Race Leases** dated 16/9/1910 - 30/11/1933. Details given include name of mineral field, county and parish, locality area, date of lease, names of lessees and details of transfers.

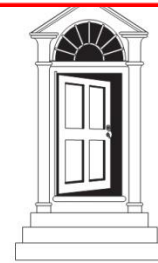
www.archives.qld.gov.au



Name of Company	Date of Registration	File No.	Book	Registration Year	Companies Office
Lady Ann P C United Gold Mining Company Ltd	19/05/1888	84	5		
Lady Augusta Gold Mining Company Ltd	22/05/1888	89	5		
Lady Carrington Gold Mines Limited	18/04/1898	75	9		
Lady Don Gold Mining Company Ltd	21/12/1883	233	2		
Lady Eleanor Gold Mining Company Ltd	08/06/1886	270	3		
Lady Flora & Doctor's Extended Gold Mining Company Ltd	18/03/1884	265	2		
Lady Florence Extended Gold Mining Company Ltd	23/02/1888	41	5		
Lady Florence G M Co Ltd	10/04/1895	299	7		
Lady Florence No 1 West Gold Mining Company Limited	05/08/1895	43	8		
Lady Franklin Gold Mining Company Ltd	25/09/1885	181	3		
Lady Helena G M Co Ltd	26/08/1889	298	5		
Lady Isabelle and Content United G M Co Ltd	21/01/1892	295	6		
Lady Isabelle Block G M Co Ltd	25/09/1891	220	6		
Lady Isabelle Limited	25/10/1895	77	8		
Lady Isabelles No 2 & 3 South United G M Co Ltd	07/06/1892	32	7		
Lady Jane Gold Mining Company Limited	16/08/1886	291	3		
Lady Lamington Gold Mining Company (No Liability)	10/06/1896	141	8		
Lady Lamington Gold Mining Company Limited	31/07/1899	256	9		
Lady Margaret Extended G M Co (No Liability)	01/12/1891	268	6		
Lady Margaret G M Co Ltd	11/09/1891	216	6		
Lady Maria Extended G M Co Ltd	05/11/1891	248	6		
Lady Maria Gold Mining Company Limited	26/05/1885	122	3		
Lady Maria Gold Mining Company Ltd	16/06/1882	97	2		
Lady Marici Gold Mining Company Limited	16/06/1882	97	2		
Lady Mary 1 & 2 South Gold Mining Company Ltd	09/01/1888	300	4		
Lady Mary and New Zealand G M Co Ltd	10/08/1893	140	7		
Lady Mary Company (No Liability)	02/09/1907	135	1	1907	Townsville
Lady Mary Gold Mining Company Boonoo Boonoo Ltd	16/11/1887	254	4		
Lady Mary Gold Mining Company Limited	27/11/1894	258	7		
Lady Mary Gold Mining Company Limited	15/09/1902	32	11		
Lady Mary Gold Mining Company Ltd	10/10/1872	94	1		

www.archives.qld.gov.au

Shauna Hicks
History Enterprises





You are here :: [Home](#) >> [Collection Search](#) >> [Online Search](#)

Register of Auriferous Leases

Surname	<input type="text"/>
First Name	<input type="text"/>
Company	<input type="text"/>
Location of Lease	<input type="text"/>
Date of Application	<input type="text"/>
Remarks	<input type="text"/>
	<input type="button" value="Submit"/> <input type="button" value="Reset"/>

Tips for Searching

Search for more than one name

+ Simply enter each name (surname and/or first name)

Wildcard character %

Mines

Register of auriferous (gold) leases, 1874-1928

The index records applicant's name, lease number, location, reel or item number.

[| Search](#) | [More information](#) |



Noel Butlin Archives Centre

The Noel Butlin Archives Centre is a nationally significant collection of primary source material relating to business and labour. The NBAC holds archives of industrial organisations, businesses, professional associations, industry bodies and the labour movement. It makes them available for research and use by the University and the wider community.

News, events & exhibitions

The Eric Fry Research Grant is available for Honours and Postgraduate Students...[read more](#)

Jesse Gregson Illuminated

Who was he?



Tooth and Company Records

Tooth and Company was once the largest supplier of beer and owner of the largest number of hotels in New South Wales. [Click here to see the sorts of records we hold for this company..](#)



Feature Map

See features from our collection mapped dynamically in a geographical context.



www.archives.anu.edu.au

On-line subject guides:

- [Records about Aboriginal people](#) (HTML) [Print](#) (PDF)
- [Australia in the First World War, 1914-1918](#) (HTML) [Print](#) (PDF 100k)
- [Australia in the Second World War, 1939-1945](#) (HTML) [Print](#) (PDF 129k)
- [Australian Indonesian Relations, 1945-1949](#) (HTML) [Print](#) (PDF 95k)
- [Communist and Socialist Publications](#) (HTML) [Print](#) (PDF 102k)
- [CSR Limited Records Relating to Employees](#) (HTML) [Print](#) (PDF 47k)
- [Family history sources in the Noel Butlin Archives Centre](#) (HTML) [Print](#) (PDF 95k)
- [Gold Mining](#) (HTML) [Print](#) (PDF 100k)
- [Intercolonial Trades Union Congresses](#) (HTML) [Print](#) (PDF 146k)
- [Peace Movement in Australia](#) (HTML) [Print](#) (PDF 61k)
- [Spanish Civil War](#) (HTML) [Print](#) (PDF 112k)

ANU ARCHIVES PROGRAM

Noel Butlin Archives Centre

Telephone: +61 2 6125 2219

Email: butlinarchives@anu.edu.au

www.archives.anu.edu.au

www.archives.anu.edu.au

RECORDS ABOUT GOLD MINING

COMPANY RECORDS

The Noel Butlin Archives Centre holds records of a number of companies involved in gold mining. Some examples of company records are:

Adelaide Steamship Company Ltd

Outwards Correspondence relating to private freighting accounts & syndicates of J Turnbull (Secretary and General Manager), 1888-1892 (N46/566)

Australian Agricultural Company

Letters to General Superintendent regarding potential gold deposits, 1853-1856 (1/46/1)

Mineral prospecting papers including letters, tracings and reports in connection with prospecting in the Port Stephens district, 1855-1904 (1/64/4)

Clarke and Co (Melbourne)

Company, 1932 (67/72)

Correspondence of TM Owen regarding Wiluna Gold Mines Ltd, WA, 1927-1932 (67/71)

Correspondence of TM Owen regarding Reef Gold Mine, Gundagai, 1932 (67/66)

Correspondence of TM Owen regarding Occidental Gold Mines NL, 1932-1933 (67/62)

Correspondence of TM Owen regarding Main Ridge Gold Mine, 1932 (67/58)

Peel River Land and Mineral Company

Despatches from the early years of the company documenting initial success in the search for gold followed by the decline in value to the company. They include monthly reports of gold licences issued.

UNION AND ORGANISATION RECORDS

The records of many unions and organisations include files about gold miners. The items listed below are just a sample.

Australian Workers Union (Head Office)

Industrial Court Transcripts Gold and Metalliferous Mining Industry, 1917 (N117/622-624)

Minutes of the Amalgamated Miners Association, Wrightville, Ganbelego Branch. Includes minutes of the Truckers & Boodlers of Mt Boppy Goldmine, 1910 (N117/1467)

Federated Engine Drivers' and Fireman's Association of Australia (Federal Council)

Tasmanian Goldmines, transcript of proceedings in the Commonwealth Conciliation and Arbitration Court, 1913 (T56/3/4-5)

Federated Engine Drivers' and Fireman's Association of Australia (NSW Branch)

Demarcation dispute with AWU over gold mining, 1983-1989 (N129/528-530)

Holdway-McMahon - Mt Carrington Goldmines (Drake Operation), 1988 (N129/1182)

Fitzherbert, PB, *The crisis: New Zealand's future depends upon your vote* Wellington, New Zealand, 1931 (Gold Standard) (P5/1/375)

Fitzherbert, PS, *The dawn of the new outlook* Wellington, NZ, 1931 (P5/1/376)

Mining Act, also amending Acts with Regulations thereunder, 9th edition, Sydney Government Printer, 1894 (P5/1/887)

Moloney, Dan, *The history of Addson's Flat goldfields* Westport, New Zealand, Westport News, 1923 (P5/1/818)

Miscellaneous Pamphlet Collection

From Tent to Parliament: the life of Peter Lalor and his coadjutors, and history of the Eureka Stockade Ballarat, 1934 (P56/253/22)

Lenin, VI *The Importance of Gold Now and After the Victory of Socialism*, Sydney, Modern Publishers Pty Ltd, first published in USSR Nov 1921 (P56/250/54)

Australian Agricultural Company, London
Guide to the Northern Gold Fields by an Old Bushman, Sydney, Woolcott & Clarke, 1856 (78/1/25)

[Home](#)[About](#)[Search](#)[Browse](#)

Welcome to the Australian Trade Union Archives

A gateway for researchers and scholars of labour history

- [Find people](#)
- [Find trade unions](#)
- [Find peak union bodies](#)
- [Find employer bodies](#)
- [Find government agencies](#)
- [Find publications](#)

Search

GO

e.g. name of organisation, person.

→ [Advanced search](#)

Parties to the Award



[Parties to the Award](#)

A Guide to the pedigrees and archival resources of Federally registered trade unions, employer associations and their peak councils in Australia 1904-1994.

Timeline



[Timeline](#)

A timeline relating to labour history in Australia 1788-2001.



Search results for: mining

178 results found.



18 pages of results.

1. [Construction Forestry Mining & Energy Union \(i\) - Trade Union entry - Australian Trade Union Archives](#)

... O P Q R S T U V W Y Trade Union entry Construction Forestry Mining & Energy Union (i) (1992- 1993) CFMEU Chart 7 ...
Terms matched: 1 - 8 Nov 2010 - URL: <http://www.atua.org.au/biogs/ALE0383b.htm>

2. [Construction Forestry Mining & Energy Union \(ii\) - Trade Union entry - Australian Trade Union Archives](#)

... O P Q R S T U V W Y Trade Union entry Construction Forestry Mining & Energy Union (ii) (1993-) CFMEU Chart 7: ...
Terms matched: 1 - 8 Nov 2010 - URL: <http://www.atua.org.au/biogs/ALE0384b.htm>

3. [Construction Forestry & Mining Employees Union - Trade Union entry - Australian Trade Union Archives](#)

... P Q R S T U V W Y Trade Union entry Construction Forestry & Mining Employees Union (1992) Chart 7: Trade Unions- Building, Construction ...
Terms matched: 1 - 8 Nov 2010 - URL: <http://www.atua.org.au/biogs/ALE0385b.htm>

4. [Federated Mining Mechanics Association of Australasia - Trade Union entry - Australian Trade Union Archives](#)

... N O P Q R S T U V W Y Trade Union entry Federated Mining Mechanics Association of Australasia (1929- 1990) Chart 7: Trade Unions ...
Terms matched: 1 - 8 Nov 2010 - URL: <http://www.atua.org.au/biogs/ALE0427b.htm>

5. [Australasian Coal & Shale Employees Federation - Trade Union entry - Australian Trade Union Archives](#)

... 1990) Miners' Federation Chart 7: Trade Unions- Building, Construction, Mining and Timber Industries Details From 1916 To 1990 Functions Trade Union (Federal) ...
Terms matched: 1 - 8 Nov 2010 - URL: <http://www.atua.org.au/biogs/ALE0103b.htm>

6. [Federated Mining Employees Association of Australia \(i\) - Trade Union entry - Australian Trade Union Archives](#)

... N O P Q R S T U V W Y Trade Union entry Federated Mining Employees Association of Australia (i) (1912- 1914) Chart 22 ...
Terms matched: 1 - 8 Nov 2010 - URL: <http://www.atua.org.au/biogs/ALE0425b.htm>

7. [Amalgamated Mining Employees Association of Victoria & Tasmania - Trade Union entry - Australian Trade Union Archives](#)

... N O P Q R S T U V W Y Trade Union entry Amalgamated Mining Employees Association of Victoria & Tasmania (1912) Chart 22: Trade Unions ...
Terms matched: 1 - 8 Nov 2010 - URL: <http://www.atua.org.au/biogs/ALE0039b.htm>



Australasian Coal & Shale Employees Federation (1916 - 1990)

Miners' Federation

From	1916
To	1990
Functions	Trade Union (Federal)
Reference No	087V

Summary

Registered federally in 1913 as the Australasian Coal Miners' Association this union was buoyed significantly in 1914 by the inclusion of members from the defunct Victorian Coal Miners' Association. In 1916 the Australasian Coal Miners' Association changed its name to the Australasian Coal & Shale Employees' Federation which operated until 1990 when it amalgamated with the of Australasia to form the United Mineworkers' Federation of Australia. In 1992 the BWIU Amalgamated Union in 1992 and later that year with the Federation of Australasia and the Operative Plasterers' & Plaster Workers' Union in 1993 following amalgamations with the Federated Furnishers' & Decorators' Union of Australia and the Operative Plasterers' & Plaster Workers' Union in 1993 following amalgamations with the Federated Furnishers' & Decorators' Union of Australia.

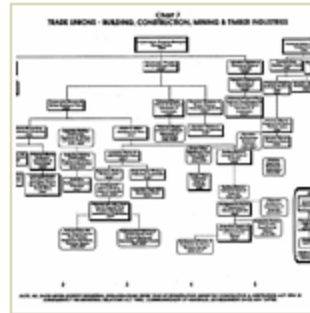


Chart 7: Trade Unions - Building, Construction, Mining and Timber Industries

Timeline

- ? - 1874 Sandhurst Miners Association
- ? - 1874 Buninyong Miners Association
- ? - 1874 Blackwood Miners Association
- ? - 1874 Clunes Miners Association
- ? - 1874 St Arnaud Miners Association
- ? - 1874 Malmsbury Miners Association
- ? - 1874 Stawell Miners Association
- ? - 1874 Maldon Miners Association
- ? - 1874 Haddon Miners Association

1870s - c. 1883 Creswick Miners Association

1874 - c. 1884 Amalgamated Miners Association of Victoria

1907 - 1914 Victorian Coal Miners Association

c. 1884 - 1916 Amalgamated Miners Association of Australasia

1913 - 1916 Australasian Coal Miners Association

1916 - 1990 Australasian Coal & Shale Employees Federation

1990 - 1992 United Mineworkers Federation of Australia

1992 Construction Forestry & Mining Employees Union

1992 - 1993 Construction Forestry Mining & Energy Union (i)

1993 - Construction Forestry Mining & Energy Union (ii)

Browse Entries

[A](#) [B](#) [C](#) [D](#) [E](#) [F](#) [G](#) [H](#) [I](#) [J](#)
[K](#) [L](#) [M](#) [N](#) [O](#) [P](#) [Q](#) [R](#) [S](#) [T](#)
[U](#) [V](#) [W](#) [Y](#)

SELECTED EVENTS IN TRADE UNION HISTORY

Wonthaggi Coal Strike (1934)

From	1934
To	1934
Functions	Strike

Summary

In response to depression-era setbacks, miners at the Wonthaggi State Coal Mine go on strike. After five months the Menzies government eventually succumbs to the Miners' Federation's demands and in so doing, helps to pave the way for the gradual nationwide restoration of conditions and wages lost during the years of the depression.

Skip to

↓ [Published Resources](#)

Published resources

Journal Articles

- Cochrane, P., 'The Wonthaggi Coal Strike, 1934', *Labour History*, vol. 27, Australian Society for the Study of Labour History, Sydney, 1974, pp. 12-30. [Details](#)



Websites & Online Indexes

- ▶ Google – are you making the most of it??
 - Google Your Family Tree – Tips & Tricks
www.shaunahicks.com.au/resources
- ▶ Ballarat & District Genealogical Society
 - Dave Evans Mining index
- ▶ State Library of Queensland Mining Accidents 1882–1900
- ▶ The Goldminer’s Database (NZ)



The screenshot shows a Google search interface. The search bar contains the text '~mining copperfield AND Queensland'. Below the search bar, it indicates 'About 39,100 results (0.22 seconds)'. On the right side of the search bar, there are links for 'Go to Google.com' and 'Advanced search'. On the left side, there is a sidebar with search filters: 'Everything', 'Images', 'Videos', 'News', 'Shopping', and 'More'. Below these, there are sections for 'The web', 'Pages from Australia', and 'Any time' with sub-options like 'Past hour', 'Past 24 hours', 'Past week', 'Past month', and 'Past year'. The main search results area shows a filter for 'Pages from Australia' with an arrow pointing to it. Below this filter, there are four search results:

- Copperfield Store and Chimney, Clermont - Mackay Tourism QLD** (+1) www.mackayregion.com/.../copperfield-store-and-chimney/ - Cached
In 1862, a 10 feet high wall of solid copper ore was discovered at **Copperfield**. Queensland's first copper **mine** opened and continued until the 1880's when ...
- Clermont and Copperfield | Queensland Places** (+1) queenslandplaces.com.au/clermont-and-copperfield - Cached
Around the **mine** grew the town of **Copperfield**, with its smelters producing 17000 tonnes of ... The Clermont Club is one of **Queensland's** oldest men's clubs. ...
- Copperfield, Queensland Australia - Totaltravel** (+1) au.totaltravel.yahoo.com/destinations/destination/.../copperfield/ - Cached
Located 5km south of Clermont, **Copperfield** once was a booming township and home to **Queensland's** first copper **mine**. A must see is the **Copperfield Store** (now ...
- Map of Copperfield Mine in Queensland - Bonzle Digital Atlas of ...** (+1) maps.bonzle.com/c/a?a=p&p=311817&cmd=sp
18 Jun 2011 – The **Copperfield Mine** in **Queensland** is a **mine** about 1210km northwest of Brisbane (show me). The **Copperfield Mine** is about 392m above sea ...

NB ~ tilde
use to pick up synonyms

www.google.com.au



Ballarat & District Genealogical Society Inc.



www.ballaratgenealogy.org.au

[Home](#) [Meetings](#) [Contacts](#) [Help Wanted & Notices](#) [Names](#) [Eureka](#) [Research Service](#) [Membership](#)

Welcome to the Ballarat & District Genealogical Society in the Goldfields Region of Central Victoria, Australia.

Google™ Custom Search

Use this onsite search engine to explore our website by searching for keywords. Articles, links, etc. for membership queries or newsletter items visit our [contacts](#) page. Use our [Research Service](#), [Help Wanted](#) or [Names](#) pages for research queries. Links to Ballarat visitor information, travel, etc., at the bottom of this page.

The umbrella organisation for local history groups in the Central Highlands region is the [C.H.H.A.](#) whereas the [W.V.A.H.S.](#) covers the Western District of Victoria. View a [Ballarat Timeline](#) or read some advice on [getting started in family history](#) or find a map on [Google Maps](#).

1891 Petition (New!) The Society is working on the identification of the names of those from the Ballarat area who signed the 1891 Women's Suffrage Petition. Go to the [1891 Petition Project](#).

Library Collection The Ballarat and District Genealogical Society's entire library collection catalogue is now accessible and searchable on-line on the [Central Highlands Regional Library Corporation](#) or direct from the link - [B&DGS Library Collection](#)

Notice Board

• **B&DGS Next Meeting** (Tuesday 22 May 2012) General Meeting at Ballarat Library, 7.30 pm. Jennifer Burrall. About my genealogical...

Ballarat & District Genealogical Society

Mail: P.O. Box 1809, Ballarat Mail Centre, VIC 3354, Australia.

Research queries : E-mail research@bdgs.org.au

Visiting Ballarat ? Our Genealogical Resource Collection is housed in the "Australiana Room" of the Ballarat City Library
[Visit the Library Website](#) or [Search the Library Collection](#)

The following websites may be of interest...

[Ballarat Archives Centre Reading Room](#) (Map available)

[Ballarat Visitor Information](#) ; [Ballarat Accomodation & Tourism](#)

[City of Ballarat](#) ; [Eureka Centre](#) ; [Sovereign Hill](#)

Transport Links... [V-Line Trains](#) - [VicLink Planner](#) - [Davis' Bus Services](#)

This Ballarat Genealogy Website is being REDEVELOPED, April 2012

!!!

This OLD site was last ~~updated~~ on 21 April 2012

The Glenelg & Wannon (S-W Victoria) section of the OLD website **HAS MOVED** (21 Feb 2012) to its own dedicated website of

www.swvic.org

-- Daryl Povey --

[Ballarat.vic.au](#) [NCable](#) [P.R.O.V.](#) [Aust.Archives](#) [Dictionary](#) [Time & Date](#) [Sensis](#)
[Family Search](#) [Google](#) [Google Maps](#) [N'papers\(NLA\)](#) [B.O.M.](#) [Hotmail](#) [Wikipedia](#)

South-West VICTORIA AUSTRALIA SOUTH AUSTRALIA GENEALOGY

www.ballaratgenealogy.org.au

Shauna Hicks
History Enterprises



"Victorian Mining Accident Index"

by - Dave Evans



Welcome to the **Victorian Mining Accident Index** compiled by Dave Evans and presented by the Ballarat & District Genealogical Society. This SAMPLE of Dave's Victorian Index includes ~5600 miners who were killed or injured from the early 1850's to the 1940's. The Index provides details of Miner's Name - Date - Status - Children - Location of Accident - Source (where you can get more information). The index is just a sample of the records, it is not complete and will have some errors. If you know of any miners not listed, or corrections to information, please contact Dave Evans (email below) with the details. Click on any letter below to access names of a sample of the miners killed or injured in mining accidents in Victoria.



Online Index Sample [Jan 2001] (Dave has many more since then !)

NOTE : Dave Evans has compiled a CD-ROM on the mining accidents it has over 9100 names [Jan 2005] with much more details on sources and cause of death etc, it is available at \$20.00 plus \$5.00 registered post

[A](#) [B](#) [C](#) [D](#) [E](#) [F](#) [G](#) [H](#) [I](#) [J](#) [K](#) [L](#) [M](#) [c](#) [N](#) [O](#) [P](#) [Q](#) [R](#) [S](#) [T](#) [U](#) [V](#) [W](#) [X](#) [Y](#) [Z](#)

Mining Accident queries to Dave Evans : [EMAIL](#) or visit Dave's [Mining Records Page](#).

Link to [Source Code Abbreviations](#) used in this index.

Back to : [Ballarat & District Genealogical Society](#)

www.ballaratgenealogy.org.au/miners.htm



A B C D E F G H I J K L M c M N O P Q R S T U V W X Y Z

Name	Date	K/I/O	Status	Dep	Comments	District	Division	Source
Rablin, John	1859/00/00	Killed			Fall of earth	Ballarat		(Dig. Evans)
Radcliffe, Thomas	1869/01/07	Injured			***	Ballarat	Nintingbool	(W.Y.H.S.) (PRO)
Radcliffe, Thomas	1886/02/16	Injured	Married, 39 Y. O.			Ballarat	Creswick	(A.R. Sec. Mines)
Radford, R	1875/04/10	Injured			Compo	Castlemaine	Castlemaine	(C.I.R.)
Rafferty, John	1892/07/30	Injured			Compo	Beechworth	Indigo	(A.R. Sec. Mines)
Raffle, William	1862/04/20	Killed	24 Y. O.		Approx Date	Ballarat	Scarsdale	Dickers M. R. (Dig. Evans)
Raglus, Alfred	1883/04/23	Injured			Compo	Sandhurst	Eaglehawk	(C.I.R.)
Rain, John	1875/00/00	Killed	47 Y. O.		Foul air		Melbourne	(Dig. Evans)
Rain, John	1875/00/00	Killed	18 Y. O.		Foul air		Melbourne	(Dig. Evans)
Raine, Joseph	1877/01/11	Killed	Married,	6		Ballarat	Ballarat	(C.I.R.)
Raisbeck, James	1859/00/00	Killed	21 Y. O.		Fall of earth	Castlemaine		(Dig. Evans)
Ramage, Robert	1877/00/00	Killed			Fall of earth	Ararat	Stawell	(Dig. Evans)
Ramage, Robert	1877/10/16	Killed	Married,	1		Ararat	Barkly	(C.I.R.)
Rambank, Joseph	1859/00/00	Killed	21 Y. O.		Fall of earth	Castlemaine	Fryers Creek	(Dig. Evans)
Ramsay, James	1895/02/04	Killed				Ballarat	Ballarat	Ballarat Times Book
Ramsay, Jas	1888/03/09	Injured	Married, 50 Y. O.			Ballarat	Ballarat	(A.R. Sec. Mines)

www.ballaratgenealogy.org.au/miners



**Queensland mining accidents
1882-1901**[State Library of Queensland](#) > [Information for...](#) > [Family historians](#) > Queensland mining accidents 1882-1900

Miners involved in Queensland mining accidents (1882-1900)

Search by surname[A Surnames](#)[H Surnames](#)[P Surnames](#)[B Surnames](#)[I & J Surnames](#)[Q & R Surnames](#)[C Surnames](#)[K Surnames](#)[S Surnames](#)[D Surnames](#)[L Surnames](#)[T Surnames](#)[E Surnames](#)[M Surnames](#)[U & V Surnames](#)[F Surnames](#)[N Surnames](#)[W Surnames](#)[G Surnames](#)[O Surnames](#)[Y & Z Surnames](#)**About this index**

In the period 1882 to 1900, Queensland mining accidents were listed annually in the *Queensland Legislative Assembly Votes & Proceedings*. This index lists, in alphabetical order by last name, the names of those miners involved and provides details of the accident.

<http://fhr.slq.qld.gov.au/minacc>



Miners involved in Queensland mining accidents (1882-1900) - surnames beginning with Go-Gu

[Ab-Ai](#) | [Al-An](#) | [Ap-Ay](#) | [Ba](#) | [Be-Bi](#) | [Bl-Bo](#) | [Br](#) | [Bu-By](#) | [Ca](#) | [Ce-Ci](#) | [Co](#) | [Cr-Cu](#) | [Da](#) | [De-Di](#) | [Do-Dw](#) | [E](#) | [Fa-Fi](#) | [Fl-Fy](#) | [Ga-Gl](#) | [Go-Gu](#) | [Ha](#) | [He-Hi](#) | [Ho](#) | [Hu](#) | [I-Je](#) | [Jo-Ju](#) | [K](#) | [La-Le](#) | [Li-Ly](#) | [Ma](#) | [Mc](#) | [Me-Mi](#) | [Mo-Mu](#) | [N](#) | [O](#) | [Pa](#) | [Pe](#) | [Ph-Pu](#) | [Q-Ri](#) | [Ro-Ry](#) | [Sa-Sh](#) | [Si-So](#) | [Sp-Sy](#) | [Ta-Ti](#) | [To-Ty](#) | [U-V](#) | [Wa-We](#) | [Wh-Wi](#) | [Wo-Wr](#) | [Y-Z](#)

Name	Date	District	Name Of Mine	Remarks	Source
Goddard, Thomas	20 Nov 1894	Charters Towers	New Victoria P. C.	Injured. Truck became derailed and tipped up, jamming his hand against the hanging-wall. (Bruised hand)	1895/3/574
Goding, Henry	19 May 1898	Charters Towers	Band of Hope	Killed. Pasing stopes after the shots had been lighted, one exploded and the dislodged stone fell on him. (Crushed)	1899/3/419
Goggin, Wm.	17 Sep 1894	Gympie	South Glanmire and Monkland	Injured. An accidental blow from a windlass handle. (Wound on forehead)	1895/3/574
Golding, William	5 Sep 1894	Charters Towers	Mills United	Injured. When separating mullock and quartz in the stopes, in putting down a large lump of quartz his finger became jammed. (Finger nearly severed)	1895/3/573
Goldsworthy, J. W.	9 May 1895	Charters Towers	Victoria and Queen	Injured. By bow of kibble on the brace. (Lost tip of forefinger)	1896/4/147

<http://fhr.slq.qld.gov.au/minacc>



Occupations in Australia

Web Sites for Genealogists - An Australian gateway site for tracing your family history by Cora Num

Need help with your Occupational Research? See my book [Occupational Records in Australia](#).

Miners

[Victorian Mining Accident Index](#) by Dave Evans. Lists the names and some details of over 5600 Victorian miners who were killed or injured in mining accidents in Victoria early 1850s to 1940s.

State Library of Queensland [Online Index of Miners involved in Queensland Mining Accidents 1882 to 1900](#). This index is compiled from mining accidents that were listed annually in the Queensland Legislative Assembly Votes & Proceedings. It is arranged alphabetically by surname and lists name, date, district, name of mine, remarks (details of accident or death) and source.

Queensland State Archives [Online Index to Mineral Leases, Queensland](#) (1871-1940). This alphabetical index lists name and references to the source documents. The source documents relate mainly to the printed lease documents which have identifying information filled in by hand. Samples of these documents are available on this site.

[Australian Mining History Association](#) site contains an extensive Bibliography of the Mining History of Australia, New Zealand and Papua New Guinea compiled by Mel Davies, University of Western Australia, 2002 with additional material to 2008. This bibliography is arranged geographically. There is also a useful links page.

[The Coal Mining History Resource Centre](#). This comprehensive site covers the history of coalmining in the UK. It includes a glossary of mining terms, photographs, maps and much more. The searchable *National Database of Mining Deaths in Great Britain* by Ian Winstanley contains over 164,000 names.

[Mining History Network](#). This site includes Mining History Bibliographies for Britain, Ireland, Scotland, Australia, Japan plus others. There is also an extensive list of mining links.

www.coraweb.com.au

Shauna Hicks
History Enterprises



GOLDRUSH ONLINE

THE GOLDMINER'S DATABASE

Search the names of 45000 goldminers from the goldrushes of New Zealand
Spanning the years 1861 - 1872

New Search

e.g. BROWN, John

Exact match

Wild card

Search

RECORDS INCLUDED IN THE GOLDMINER'S DATABASE

[Otago Mining Records \(1861 - 1866\)](#)

[Thames Mining Records \(1867 - 1872\)](#)

[Explanation of the Record Types in the Database \(First column in the results chart\).](#)

[Notes on the Thames Goldfields and searching the Database.](#)

[Miner's Rights in Thames.](#)

[The Major Goldrushes of the 1800s.](#)

Cornish Associations

- ▶ Cornish Associations of Australia Inc
- ▶ Cornish Association of Victoria
 - Branches at Ballarat, Geelong
 - Project – Overland Gold
- ▶ Southern Sons of Cornwall
- ▶ Cornish Mining World Heritage



CORNISH ASSOCIATIONS OF AUSTRALIA



Access the various Cornish Associations within Australia



Mytten da! .. welcome!

Next Major Cornish Festivals: In Nowra NSW 26-28 October, 2012 [Cornish Cultural Celebration](#) ; and the Kernewek Lowender (a Cornish Festival, on the Copper Coast, South Australia) - 21 to 26 May 2013 [Kernewek Lowender](#) - remember 'The Year of the Cornish' at the Australian Celtic Festival, Glen Innes NSW, is in May 2014.

ASSOCIATIONS & CONTACTS www.celticcouncil.org.au/cornish/cca_corn.htm

- Cornish Association of South Australia Inc (founded 1890) [CASA web site](#)

Email: [Secretary](#) (and also will cover NT)

- Cornish Association of North Yorke Peninsular (a CASA Branch) - Not yet available

Email: [Contact:](#)

- Cornish Association of Western Australia (founded 1974) [CAWA web site](#)

Email: [Secretary](#)

- Cornish Association of New South Wales (founded 1974) [CANSW web site](#)

Email: [Secretary](#) (will cover former CA of ACT members)

- Southern Sons of Cornwall Inc (founded 1998) [Southern Sons web site](#)

Email: [Secretary](#)

- Cornish Association of Victoria Inc (founded 1986) [CAV web site](#)

Email: [Secretary](#)

- Cornish Association of Ballarat (CAV Branch) [Ballarat web pages](#)

Email: [Secretary](#)

- Cornish Association of Geelong

- Cornish Association of Bendigo & District Inc (closed September 2011 - contact CAV Inc, or [Bendigo web site](#)

Local email: [Secretary](#)

- Cornish Association of Queensland (founded 1994) [CAQ web site](#)

Email: [Secretary](#)

- Cornish Association of Tasmania (Now closed)

Email: CAV Inc. (as above)

- Cornish Association of New Zealand [CA of NZ](#)



CORNISH ASSOCIATION OF VICTORIA



- Home -

[Home](#) [About us](#) [Association Events](#) [News](#) [Activity Groups](#) [Branches](#) [Association Resources](#) [Photo Galleries](#) [Links](#)

Quick Links

[Eaglehawk Festival 2012](#)

[Photo Galleries](#)

[Resource Centre Hours](#)

[Latest News](#)

[Ballarat Branch](#)

[Geelong Branch](#)

[OverlandGold](#)

[Contact Us](#)

Welcome to the "Home Page" of the Cornish Association of Victoria Inc, Australia.

Browse the menus above and enjoy all we have to offer. If you live in Victoria, Australia you might like to join our vibrant Association. We meet at the Oakleigh Baptist Church Hall, which is situated at the corner of Warrigal Road and Moorookyle Avenue, Oakleigh. (Melway Ref. Map 69 E10).

For all enquiries contact the Secretary: [Miss June Whiffin](#),

Monthly meetings are held the 3rd Saturday, between 1.30 pm and 4.30 pm. February to November and the 2nd Saturday of December.

Library and Research facilities are also situated at the Church Hall, and are open on the 2nd Tuesday, the 3rd Saturday and 4th Monday of each month from 10 am to 2 pm (except January).

The July speaker will be Moira Drew "Researching her project 'Overland Gold'" [See more.....](#)



www.cornishvic.org.au

Shauna Hicks
History Enterprises



– Home –

Welcome to our website - Overland Gold - which provides a forum to share information relating to travel between the copper mining areas of South Australia and the Victorian goldfields in the early 1850's - an integral part of early Australian history.

We hope you can contribute to this resource.

Introduction:

In 1851 after news of gold discoveries in Victoria reached the copper mining regions of South Australia, in particular the settlement of Burra, many left immediately for the Victorian goldfields, leaving homes, jobs, and in some cases families. The extent of the subsequent overland migration lead to considerable economic pressures on the Burra mines, the area surround it, and the state of South Australia itself.

A significant number of travellers made their way overland - a journey which generally took around 6-8 weeks - depending on the route taken, a distance of approximately 450 miles (725 kms).

Did they walk? How did they travel? How did they find the way? How many were involved?

There is increasing interest amongst family historians in stories that complement family tree research. By providing this forum and collecting accounts, references and data relating to people who made the journey, we hope to increase understanding of the subject. We also aim to provide a guide for those who would like to 'follow in the footsteps' of their forebears.



EXPLORE THE INTERACTIVE MAP

www.cornishvic.org.au/overlandgold

Shauna Hicks
History Enterprises





THE SOUTHERN SONS OF CORNWALL INC.

Mebyon Kernow y'n Soth

[HOME](#) [ABOUT US](#) [EVENTS](#) [CONTACTS](#) [GALLERY](#) [MEMBERSHIP](#) [NEWSLETTERS](#) [GENEALOGY](#) [LINKS](#)

[CORNISH CULTURAL CELEBRATION OCTOBER 26th-28th 2012](#)

click above to view details of this exciting event

WELCOME TO THE WEBSITE OF THE SOUTHERN SONS OF CORNWALL

The Southern Sons of Cornwall Inc. is an active Cornish Association whose members mostly live on the South Coast and Southern Highlands of NSW.

Our logo of a Cornish engine house represents the Cornish under the Southern Cross.

From the President:

On behalf of the members of the Southern Sons of Cornwall Inc., I would like to offer you and your family a warm welcome to our Association.

While we are by many standards a small organization, you will find that we are a highly respected member of the Cornish Associations, not only here in Australia, but also internationally.

We look forward to welcoming you at our meetings and outings, where

<http://freepages.rootsweb.ancestry.com/~jwheeler>



Start exploring.....

Hover over an icon to explore the impact of Cornish mining on the world.



Activities

Discover what's on offer in the Cornish Mining World Heritage Site.



Area Locations

Click on the coloured areas in the map below to find out more about the history of each area and the great places to visit within the 10 distinct Cornish mining landscapes.



www.cornish-mining.org.uk

Shauna Hicks
History Enterprises



Miners' Health Issues



- ▶ A dangerous occupation
- ▶ Accidents (minor, fatalities, disasters)
- ▶ Miners phthisis
 - **Anthracosis** \An`thra*co"sis\, n. (Med.) A chronic lung disease, common among coal miners, due to the inhalation of coal dust; -- called also collier's lung and miner's phthisis.



Series ID	Item ID	Record Type / Description / Departmental Numbers	Start Date	End Date	Digital Images
18309	1028277	<u>Batch file, railway</u> Miners Phthisis Claim - Alexander Hay 35-217	11/12/1934	11/3/1935	<input type="checkbox"/>
6232	963715	<u>Correspondence</u> Notice of Question - Miners Phthisis Fund 78/1856	30/5/1978	31/12/1978	<input type="checkbox"/>
7645	275105	<u>Correspondence, mines</u> Miners phthisis: 1967L; 676L 5 Jan 1910; 676L 26 Jan 1910; 1048L 11 Feb 1910; 1461L 2 Mar 1910; 596L 25 Jan 1910; 877L 4 Feb 1910; 1241L 19 Feb 1910; 639L 27 Jan 1910; 640L 27 Jan 1910; 1220L 21 Feb 1910, cont.	1/1/1910	31/12/1910	<input type="checkbox"/>
14812	86596	<u>Correspondence, police</u> Miners Phthisis M1426	1/1/1917	31/12/1917	<input type="checkbox"/>
12353	8881	<u>Register - admissions, hospital</u> Register of admissions and discharges or deaths at Diamantina Hospital (may be indigents and miners' phthisis cases since included in register of allowances to these recipients of government relief) 2 - 341	1/1/1902	31/12/1907	<input type="checkbox"/>
6303	971253	<u>Register - correspondence, inwards</u> Treasury Department - Card register of letters received: Stamp duty	1/1/1978	31/12/1978	<input type="checkbox"/>

www.archivessearch.qld.gov.au

Shauna Hicks
History Enterprises





Diseased and healthy lung (1st of 2)

Compare these sections cut from a diseased lung with large cavities (left) and a pink, healthy lung (right). The diseased lung shows a case of miner's phthisis (also known as silicosis) which has led to tuberculosis. Quartz dust is inhaled by miners, and trapped in the lungs causes silicosis making the victim more susceptible to diseases such as tuberculosis and pneumonia.

www.teara.govt.nz/en/gold-and-gold-mining





You are here: Te Ara Home > Earth, Sea and Sky > Mineral Resources

Gold and gold mining

Get the Short Story
A quick, easy read

by Carl Walrond

In the 19th century discovering gold was a way out of poverty. From the 1860s, gold rush followed gold rush, and thousands flocked to the fields. But the work was harsh, with days spent digging in cold creek beds. Only a lucky few found riches in the rock. However, the collective value of the gold that was discovered kick-started the young colony's economy. Gold was the making of early New Zealand.

[Continue...](#)



Explore this story:



[As good as gold](#)



[Where you find it](#)



[Otago](#)



[West Coast](#)



[Coromandel Peninsula](#)



[Other goldfields](#)



[Methods of mining](#)



[Dredging](#)



[Miners](#)



[Māori and Chinese miners](#)



[Recent mining](#)



[Gold and the economy](#)



[Further Sources](#)

www.teara.govt.nz/en/gold-and-gold-mining

New Australasia Gold Mine

[\[edit\]](#)

Creswick in the Victorian goldfields was the site of the The New Australasian No.2 Deep Lead Gold Mine. At 4:45am, Tuesday 12 December 1882, 29 miners became trapped underground by flood waters that came from the flooded parallel-sunk No. 1 mine shaft, only five men survived and made it to the surface. Despite two days of frantic pumping the waters filled the mine shaft. The trapped men scrawled last notes to their loved ones on **billy cans** before they drowned. Some of these have been kept and still bear the messages. The men that perished left 17 widows and 75 dependent children.^[29]

Mount Kembla

[\[edit\]](#)

In 1883 a coal mine was opened near Mount Kembla in the Illawarra District of New South Wales. In 1902 there was an explosion in the mine and 96 men and boys lost their lives, either while at work or in the course of trying to save the lives of others. Every family in the village lost a relative. A service of commemoration is held annually on 31 July at the Mount Kembla Soldiers' and Miners' Memorial Church. This is the worst mining disaster in Australia's history.^[30]

Balmain Colliery

[\[edit\]](#)

Balmain Colliery was located in **Birchgrove, New South Wales** and produced coal from 1897 until 1931 and natural gas until 1945. During this period, 10 miners lost their lives in three separate incidents:

1900 On 17 March 1900, six miners were being lowered down the Birthday shaft. At 1,424 feet the bucket they were travelling in caught on a projection, tipped over and five of the six men fell to their death in the shaft. As a result of this accident, the *Mining Act* was amended to provide guide rails in shafts to prevent bucket swinging or overturning.^[31]

1932 In 1932, a year after the mine closed, a six inch bore was sunk below the Birthday shaft to pipe Natural Gas to the surface. During the sinking of the bore, two men were killed when the gas ignited and exploded.^[31]

1945 During the sealing of the Birthday shaft on 20 April 1945, a rudimentary test was being undertaken which ignited escaping gas and caused an explosion below the seal. The company manager and two men were killed in the accident and another two men injured.^[31]

http://en.wikipedia.org/wiki/Mining_in_Australia#Mining_disasters



Memorial for the workers who lost their lives at Mount Kembla, 1902

North Mount Lyell

[\[edit\]](#)

On October 12, 1912, the **North Mount Lyell Fire** caused the death of 42 miners, and required breathing apparatus to be transported from Victorian mines at great speed, to rescue trapped miners. The subsequent royal commission was inconclusive as to the cause.

Mount Mulligan

[\[edit\]](#)

The 1921 **Mount Mulligan mine disaster** occurred in **Far North Queensland**. These explosions, caused by using naked flame for lighting, killed seventy-five men.

Moura

[\[edit\]](#)

Four serious accidents have occurred at mines in the Central Queensland town of Moura, Queensland|Moura. The first accident took the lives of 13 men in September 1975. In July 1986 there was an explosion at Moura Number 4 Mine. 12 coal miners lost their lives in this disaster that sparked controversy after experts claimed the accident was avoidable. Another explosion killed two men in January 1994 and just eight months later another explosion deep underground took the lives of 11 men.^[32]

Bronzewing

[\[edit\]](#)

On the 26th of June 2000, at the **Bronzewing Gold Mine** in Western Australia (400 kilometers from Kalgoorlie), 18,000 cubic meters of sand-slurry, sludge, mud and rock broke through a storage wall. Three men (Timothy Lee Bell, 21, Shane Hamill, 45 and Terrence Woodard, 26) were killed and eight escaped the 'accident'. It took over a month to retrieve the men from the site.

Beaconsfield

[\[edit\]](#)

Main article: Beaconsfield mine collapse

On 25 April 2006, part of an underground gold mine at **Beaconsfield** in **Tasmania** collapsed. One miner, Larry Knight, was killed by the rock fall, and two others, Brant Webb and Todd Russel, were trapped, leading to a rescue mission that took two weeks to get them out alive.

Bulli

[\[edit\]](#)

1887 At 2.30pm on 23 March 1887, an explosion at the mine in **Bulli** in **New South Wales** killed 81 people.^[33] A special commission was set up to investigate the explosion and concluded:

“ ..that the explosion was caused by marsh gas or carbonic hydrate that had accumulated at the face. That the immediate cause was probably the flame from an overcharged shot fired by a miner in the coal in No. 2 Heading.

”



Accidents

[edit]

In earlier years, coal mining had a high rate of injuries and death, most of them individual deaths. Between just 1900 and 1914 there were 141 men killed, of which 98 were individual deaths.^[24]

The largest-scale accidents are:

- 21 February 1879, [Kaitangata coal mine disaster](#), 34 miners died when candles caused an underground explosion
- 26 March 1896, [Brunner coal mine disaster](#), 65 miners killed by an explosion or by poisonous gases following the explosion. As of 2010 this is New Zealand's largest death toll from an industrial accident.
- 12 September 1914, Ralph Mine, [Huntly](#), a naked light caused an explosion that killed 43 coal miners^[25]
- 3 December 1926, [Dobson coal mine](#), 9 killed by explosion
- 24 September 1939, Glen Afton coal mine, [Huntly](#), 11 asphyxiated by carbon monoxide
- 19 January 1967, [Strongman coal mine](#), 19 miners killed by explosion^[26]
- 19 November 2010, [Pike River mine accident](#), 29 dead

http://en.wikipedia.org/wiki/Mining_in_New_Zealand



Photographs

- ▶ Picture Australia now in Trove
- ▶ State Libraries
- ▶ State Archives
- ▶ University Archives
- ▶ Historical Societies
- ▶ Don't forget Flickr





Government of South Australia



STATE LIBRARY

For your information...

[More information about this image in the catalogue record](#)

If you can provide additional information for this image, please [tell us](#).

No known copyright restrictions
[Conditions of use](#)



B 46012

Cornish miners, Burra

Cornish miners working in the mines at Burra

ca.1870

3006 x 2140 pixels, 6.2 MB

TITLE

DESCRIPTION

DATE

Size of Master Image

Trove search for Cornish miners

Shauna Hicks
History Enterprises



Christoe St, Copperfield 1876

Images John Oxley Library





Quart Pot Hotel, Stanthorpe
1872
Image John Oxley Library

Schoolchildren 1873
Stanthorpe State School
Image John Oxley Library

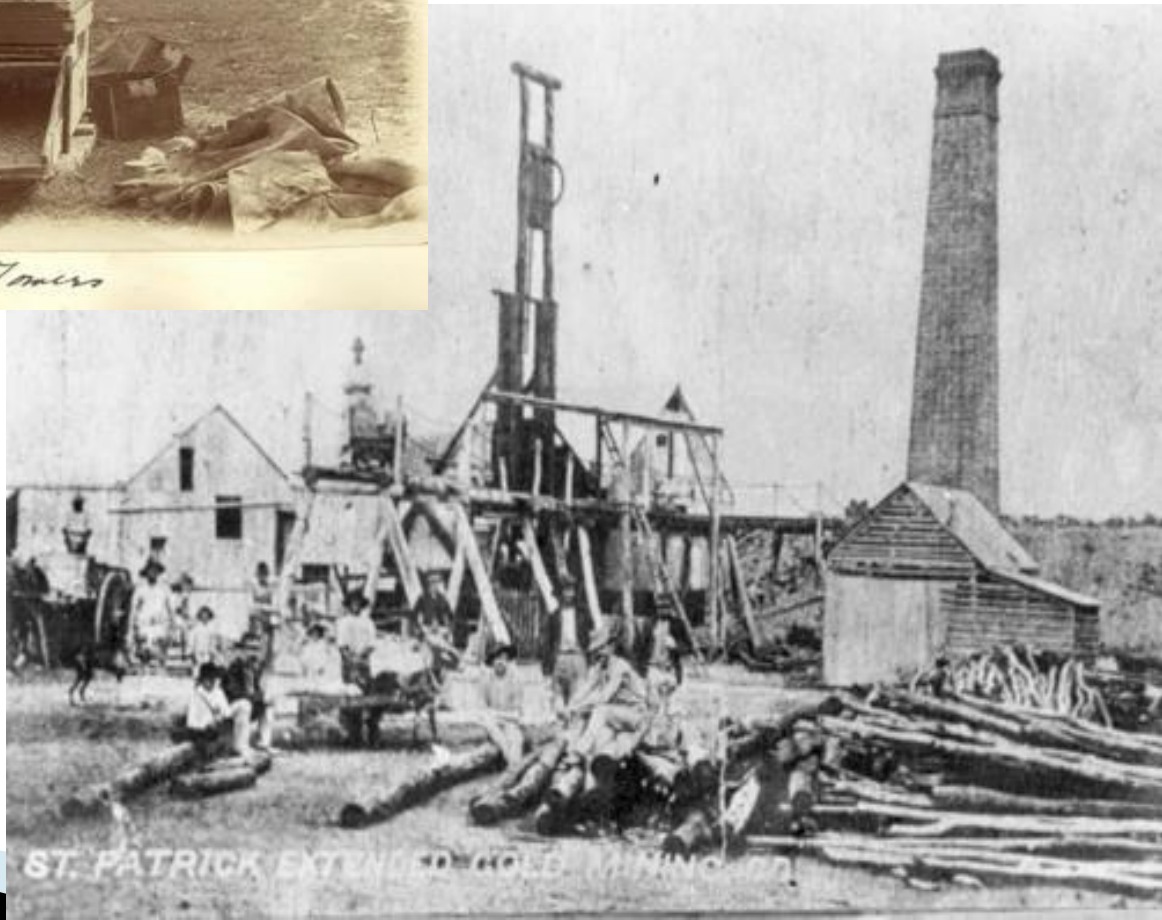


Images John Oxley Library



Cradling for gold outside
Charters Towers

Workers outside St
Patrick Extended
Charter Towers ca 890





Memorial - Cornish Miner - Bendigo Vic

This is the memorial in the large provincial city of Bendigo Vic to the Cornish miners. Their expertise contributed to the successful gold mining ventures in that area.



By [TheTannykid](#)
Tom Fletcher + Add Contact

This photo was taken on November 4, 2007 using a Kodak C875 Zoom.

👁 276 views ⭐ 1 favorite 💬 2 comments

This photo belongs to

[TheTannykid's photostream](#) (3,166)



This photo also appears in

- ▶ [Memorials & Plaques - Other](#) (set: 67)
- ▶ [Historic Australia 1788-1901](#) (group: 5,900)
- ▶ [Trove: Australia in Pictures](#) (group: 132,220)
- ▶ [Tiny little slice of history](#) (group: 7,557)
- ▶ [Best of Australia \(Now Moderated\)Ta...](#) (group: 5,007)

Tags

[Memorials](#) • [Victoria](#) • [Goldmining](#) • [Australia](#) • [Australiana](#)

License

© All Rights Reserved

Conclusion

- ▶ Follow the copper, gold or whatever else was being mined
- ▶ Most records are not indexed
- ▶ Not everything has survived
- ▶ Have fun & good luck!

