

# Asylum Records: A Place to Look for Missing Ancestors!

Shauna Hicks

[www.shaunahicks.com.au](http://www.shaunahicks.com.au)



# What are asylums?

- ▶ Terms include benevolent, mental, psychiatric hospitals, sanatoriums
- ▶ For the sick, not just those with mental illness
- ▶ For the aged
- ▶ For the destitute
- ▶ For the forgotten
- ▶ For those with no one else to care for them



# Reasons for Female Admission into Victorian asylums (examples)

- ▶ Change of life
- ▶ Desertion of husband
- ▶ Destitution
- ▶ Lonely life in the bush
- ▶ Religion, Religious mania
- ▶ Senility
- ▶ Worry
- ▶ Worry about family
- ▶ Worry & hard work
- ▶ Alcohol
- ▶ Child birth
- ▶ Climacteric (menopause)
- ▶ Heredity
- ▶ Influenza
- ▶ Fright caused by child nearly drowning in river
- ▶ Shipwrecked at one time
- ▶ Shock, death of husband



# Agencies Creating Records

- ▶ Asylums
- ▶ But also
  - Colonial (Chief) Secretary's Office
  - Hospitals
  - Justice Department (inquests)
  - Police Department
  - Prisons Department (gaols)
- ▶ And don't forget
  - Newspapers



# Types of Records

- ▶ Admission files
  - ▶ Admission registers (registers of patients)
  - ▶ Case books (case files)
  - ▶ Indexes and alphabetical lists
  - ▶ Medical case books
  - ▶ Warder's diaries
- 
- ▶ Access varies around Australia



# Finding Aids

- ▶ Records usually with the State Archives
  - ▶ Brief Guides or Fact Sheets
  - ▶ Online Indexes and Databases
  - ▶ Digitised Records
- 
- ▶ Now we will have a look at the various Australian states



# Queensland

## Queensland State Archives

- ▶ <http://www.archives.qld.gov.au>
- ▶ Brief Guide 26 – Guide to Dunwich Records
- ▶ Brief Guide 39 – Insanity/Mental Asylum Records
- ▶ Wolston Park Hospital (Woogaroo Asylum)  
1865 – current
- ▶ 100 years access
- ▶ Public Curator Insanity Files





# Insanity / Mental Asylum Records

## Brief Guide 39

A 3 page  
guide listing  
main series

This Brief Guide provides an overview of Queensland State Archives records relating to mental health patients. Prior to the separation from New South Wales in 1859, there were no facilities for psychiatric treatment in the Moreton Bay Region. As such, mentally disturbed persons, or “lunatics”, would have been sent to Brisbane Gaol or possibly to an asylum in Sydney. Woogaroo Lunatic Asylum opened in 1865 with 69 patients, and has undergone many name changes and renovations since.

There are two main types of mental asylum records held at Queensland State Archives: Public Curator Insanity files and Goodna Case Books.

### Public Curator insanity files

In general Public Curator insanity files held at Queensland State Archives consist of records of people who were admitted to the institutions in Goodna (Woogaroo), Ipswich (Sandy Gallop), or Toowoomba (Willowburn).

The main series of records at Queensland State Archives that relate to insanity and







## Series Search Results

Click on the required Series title/abstract to view its details and see a list of Items.

Note the long date range for case books

### Matching Series

Series ID	Title / Abstract	Start Date	End Date
9051	<a href="#">Case Books</a>	05/11/1860	14/08/1931
5839	<a href="#">Case Books - Male</a>	08/06/1866	26/03/1956
5236	<a href="#">Letterbook of Samuel Lewis</a>	28/11/1893	18/02/1899
6749	<a href="#">Loan Account Registers</a>	28/04/1861	30/06/1930

Loan account registers for all towns, districts, shires, etc. including all repayments and bank deposits.

### Search Criteria

#### ☒ Search Criteria

☒ Search For  
*woogaroo asylum*

☒ Using  
*All of the words*

Note simple keyword search



Agency ID	878	Today's benevolent asylums
Title	Eventide Home, Sandgate	
Agency Type	Residential care facility	
Start Date	04/10/1946	
End Date	Current	
Date Notes	N/A	
Abstract	Responsible for care of the aged <a href="#">Go to Description...</a>	

## Series

Series ID	Title	From	To
10246	<a href="#">Admission Book</a>	N/A	N/A
10341	<a href="#">Hospital Daily Report Books, Female Patients</a>	N/A	N/A
10340	<a href="#">Hospital Daily Report Books, Male Patients</a>	N/A	N/A
9637	<a href="#">Register of Deceased Estates</a>	N/A	N/A
10249	<a href="#">Registers of Deaths and Discharges</a>	N/A	N/A
10247	<a href="#">Residents' Registers</a>	N/A	N/A
9635	<a href="#">Transfer Register</a>	N/A	N/A
9606	<a href="#">Daily Report Book, Female Division</a>	04/10/1946	01/01/1949
10342	<a href="#">Daily Report Books, Male Division</a>	04/10/1946	31/12/1970
9628	<a href="#">Registers Of Deaths</a>	04/10/1946	01/07/1971
9617	<a href="#">Indexes (Inmates Registers)</a>	04/10/1946	17/11/1979
10248	<a href="#">Registers Of Discharges</a>	04/10/1946	31/12/1984
10250	<a href="#">Registers of Deaths</a>	04/10/1946	31/12/1988



# Judy Webster's Genealogy Advice for Australia, especially Queensland

- ▶ <http://www.judywebster.gil.com.au>
- ▶ Some indexes for
  - Insanity
  - Dunwich
  - Colonial Secretary



# Mental Asylum records (Queensland)

## Insanity files: names beginning with A & B

© Copyright [Judy Webster](#). Updated 24 Sep 2009.

Receive email when names are added or corrections made

In genealogy / family history research, we often find that someone 'vanished'. If a **death certificate cannot be found**, or if **children were raised by someone other than their parents**, check **mental asylum** records. Reasons for admission to a mental asylum included **epilepsy, alcoholism and depression** (especially post-natal depression). Some patients were only in the asylum for a few days.

'Public Curator insanity files' (which are only closed for 75 years) are **not** the same as 'case books' (which until recently were rarely accessible even via Freedom of Information).

Qld State Archives hold **Public Curator insanity files** for people admitted to mental asylums at Goodna (Woogaroo / Wolston Park), Toowoomba (Willowburn) and Ipswich (Sandy Gallop). Insanity files usually give **dates** of admission and discharge or death, and many include **letters** from the patient or his/her relatives, and sometimes **police reports, certificates, wills, divorce details, lists of property**, etc. Information about **relatives** may include addresses, biographical data, employment history, financial or social circumstances, police reports on those asked to pay maintenance, etc.

If you do not know the **date of first admission** to an asylum, you may need to search several indexes. Qld State Archives hold **three 'indexes' to Public Curator insanity files**: a printed index to old insanity files c1865-1893 (most are for 1880-1893), a register of insanity files 1894-1918 and an index to insanity files 1919-c1945 (the latter two are arranged by first letter of surname only).

**(NEW)** To obtain maximum information you must **use all relevant sources**, such as:

- **Public Curator insanity files** (see the new alphabetical index to insanity files to 1918, below)
- **(NEW) [Mental asylum case books 1860-1931](#)** (usually give reason for admission)
- [Supreme Court insanity files 1885-1901](#)
- [Colonial Secretary's Office in-letters](#)
- [Annual Reports of asylums](#)
- [Police Gazettes](#)
- [Justice Department inquest files](#)
- [Premier's Department undertaking files 1920-1955 \(as found\)](#)

# QLD contd

- ▶ Sanatoriums
  - Jubilee sanatorium, Dalby
  - Roma
  - Westwood sanatorium
- ▶ Inebriate institutions (1896 legislation)
  - Dunwich
  - Peel Island
- ▶ Similar places to look for missing ancestors who may have been ill



# New South Wales

## State Records New South Wales (SRNSW)

- ▶ <http://www.records.nsw.gov.au>
- ▶ Archives in Brief (AIBs)
- ▶ Resources for Family Historians – Asylums

## Sydney Benevolent Asylum (Mitchell Library)

- ▶ <http://www.sydneybenevolentasylum.com>
- ▶ Online index to admissions & discharges 1857–1900 (78,000 records)



# SRNSW Archives In Brief

- ▶ No 85 Mental Health Records – Patient Records
- ▶ No 86 Infirm and Destitute Asylum Records
- ▶ No 87 Liverpool State Hospital & Home
- ▶ 110 year access





# Archives In Brief 85 - Mental health facilities - Patient records

An overview of the types of patient records available and where to access them.

- » [Mental health care terminology](#)
- » [Brief History of the administration of mental health care](#)
- » [Mental health facilities](#)
- » [Using the Archives Investigator to find lists of records held](#)
- » [Typical records of mental health facilities](#)
- » [Related records](#)
- » [Records held elsewhere](#)
- » [Access to records](#)

## Mental health care terminology

### Past terminology

You will notice terms such as '*asylum*', '*lunatic*', '*lunatic asylum*' and '*mental hospital*' are used in both the records and in our finding aids. These are terms that were used when the records are created.

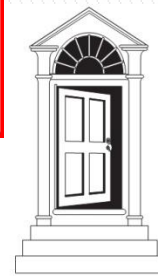
### Mental health care

Mental health care involves assessing persons believed to be mentally ill and providing them with appropriate treatment in hospitals, community housing or while remaining members of the community.

### Care for the infirm and destitute

The NSW Government has also managed the care of the poor and infirm, who were not mentally ill. Asylums, hospitals and homes were built to house and care for them. For records of people cared for in these institutions and how to access to them please see [Archives in Brief 86](#).

- » [See our family history page on asylum records](#) for more information and examples of the records



# Asylum records

A common way of finding out if a relative was in a mental hospital is to check the death certificate. If a person died in a mental hospital or asylum it will be stated on the death certificate.

- » [How do you know if your ancestor was in an asylum?](#)
- » [How to access patient records](#)
- » [What records do we hold?](#)
- » [What types of records are available?](#)
- » [For more information on mental health records](#)
- » [Gallery](#)

## How do you know if your ancestor was in an asylum?



You may also know that an ancestor spent some time in an asylum from hearsay or family stories.

Try to gather as much information as you can.

### What we need to know

To help you track down the records we need to know:

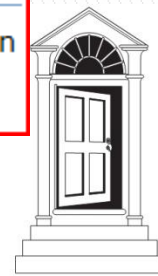
- » what asylum your ancestor was in
- » approximate date or year in asylum, and
- » the date of death in the asylum or discharge from the asylum.

**NOTE:** We cannot search large periods of time as lengthy research would be required and we do not undertake research.

## How to access patient records



Patient identifying records are closed to public access (CPA) for 110 years. This direction covers records created or maintained by the Department of Health.



# SRNSW – Resource Guide to Asylum Records

- ▶ 110 year restricted access
- ▶ Surviving records:
  - Bay View House, Tempe 1865–1946
  - Broughton Hall Psychiatric Clinic 1915–1963
  - Callan Park Mental Hospital 1877–1965
  - Gladesville Mental Hospital 1822–1985
  - Kenmore Mental Hospital 1938–1942
  - Lunatic Asylum Liverpool 1829–1838
  - Newcastle Psychiatric Centre 1871–1976
  - Newcastle Psychiatric Hospital Reception House 1903–1964
  - Parramatta Psychiatric Centre 1848–1989
  - Reception House, Darlinghurst 1868–1962
  - Rydalmere Psychiatric Centre 1888–1985
  - Temporary Hospital for the Insane Cooma 1879–1884





## Parramatta Hospital for the Insane ca 1900 >>

SRNSW NRS 5598 series of 24 photographs



# SRNSW Infirm & Destitute Asylums

- ▶ George Street Asylum, Parramatta
- ▶ Hospital of Consumptives, Waterfall
- ▶ Lidcombe State Hospital & Home
- ▶ Liverpool State Hospital & Home
- ▶ Macquarie Street Asylum, Parramatta
- ▶ Newington State Hospital (closed 1964)
- ▶ Rookwood Asylum (later Lidcombe State Hospital & Home)



*Sydney Morning Herald*  
*17<sup>th</sup> June 1876*

**CAPTURE OF AN ESCAPED LUNATIC.**—On Sunday, the 11th instant, constable Woodcroft, of the Parramatta police, while on the look-out for a lunatic named Joseph Trounce, who had escaped from the Gladesville Asylum on the forenoon of the previous day, came across the object of his search on the Windsor Road, within about a mile of that town, at between 12 and 1 o'clock p.m. He at once arrested the dangerous traveller, but met with a most violent resistance, and received several severe blows. It being just the time when the people were going home from church, help was at hand, and on hearing the constable call out several persons went to his assistance, and with their aid the creature was secured, and lodged in the Windsor lockup, until the arrival of two attendants belonging to the asylum, who conveyed him to the place from whence he had escaped. It is said that this is the third run which the same lunatic has had from Gladesville Asylum. And it really seems wonderful that he should take such long rambles and do no injury. Had any poor woman, or unprotected child, chanced to encounter him on that lonely road, the result would probably have been less satisfactory, and it appears very strange that some more effectual steps have not been taken before this for the safer custody of asylum patients who betray such a disposition to take a walk abroad. Every one of the Parramatta police who could be spared was employed in the search.

SRNSW NRS 5133  
Newspaper cuttings  
book, Parramatta



# Penrith Benevolent Asylum

- ▶ Helen Castle index & transcription of Penrith District Dispensary Register 1847– Feb 1860
- ▶ <http://freepages.genealogy.rootsweb.ancestry.com/~hcastle/registers/registers.htm>
- ▶ Register is in National Library of Australia and only available on microfilm





# 1853

[ [Home](#) ] [ [Up](#) ] [ [1847](#) ] [ [1848](#) ] [ [1849](#) ] [ [1850](#) ] [ [1851](#) ] [ [1852](#) ] [ [1853](#) ] [ [1854](#) ] [ [1855](#) ] [ [1856](#) ] [ [1857](#) ] [ [1858](#) ] [ [1859](#) ] [ [1860](#) ] [ [Vaccinations](#) ]

These pages contains transcripts of newspapers, a postal directory and a register that have been typed up from the original.

I have no further information than what is on these pages. You may find microfische of the originals at your local or state library

[registers/transcripts/images/1853.jpg](#) ]

No	Patients Name	Residence	Date	Disease	Prescription	No of attendances	Name of member recommending	Remarks
1	Joseph Ettle	St Marys	January	Tupis Senilis			P P King Esq	relieved
2	William Lewis	Castlereagh	26/1/1853	Psora Senilis			A Fraser Esq	relieved
3	Edward Lambert	Colubrook	1/5/1853	Pthisis		4	Revd M Brennan	B Asylum
4	Mary Shelton	Castlereagh	10/5/1853	Injd Loins			Mr John Perry	discharged
5	John Warren	Castlereagh	12/5/1853	Catarrh		4	Mr Alex Fraser	well
6	Edward Ingliss	Castlereagh	25/6/1853	Destitute			Mr Alex Fraser	B Asylum
7	Mrs I Mc Glinchy	Erskine Park	26/6/1853	Hernia			Revd M Brennan	???
8	Alexander Smith	Castlereagh	11/7/1853	Blind and destitute			R C Lethbridge Esq	B Asylum
9	John Ray	Regentville	27/7/1853	Influenza		3		well
10	John C ourt	Penrith	29/9/1853	Hydross Thoracis		10+	A Fraser	dead
11	Patrick Neale	Penrith	31/12/1853	Injd Hand			Mathw Hogan	well
			<b>1854</b>					
12	Timothy Corcoran	Penrith	16/1/1854	Cough and disease of heart			Matthw Hogan	dead
13	Margaret Sinfeld	Penrith	22/2/1854	rheumatism			R C Lethbridge	well
14	George Smith	Castlereagh	25/2/1854	Injd Hip Joint		1	A Fraser Esq	discharged
15	Thomas Agars	Penrith	28/2/1854	Syphilis		2	M Lowe Esq	gone away

These pages contains transcripts of newspapers, a postal directory and a register that have been typed up from the original.

I have no further information than what is on these pages. You may find microfische of the originals at your local or state library

[ [Home](#) ] [ [Up](#) ] [ [1847](#) ] [ [1848](#) ] [ [1849](#) ] [ [1850](#) ] [ [1851](#) ] [ [1852](#) ] [ [1853](#) ] [ [1854](#) ] [ [1855](#) ] [ [1856](#) ] [ [1857](#) ] [ [1858](#) ] [ [1859](#) ] [ [1860](#) ] [ [Vaccinations](#) ]

# Sydney Benevolent Asylum

## Index to Admissions and Discharges

1857-1900



### → Welcome

- [Search the Index](#)
- [Once you have found an entry](#)
- [The Project](#)
- [What was the Benevolent Asylum](#)
- [Records of the Benevolent Asylum](#)
- [Other records of interest](#)
- [Photo Gallery](#)
- [About Us](#)
- [Privacy and Disclaimer Statement](#)
- [Contact Us](#)

## Welcome



This website deals with the historical records of the Sydney Benevolent Asylum for the period 1857-1900.

The records of the Asylum can be the answer to many research problems and, with that in mind, between 1995 and 2007, an index of the inmates of the Asylum was compiled from records held at the Sydney Mitchell Library. The resulting database contains over 78,000 records. As far as has been possible, it is a listing of all the inmates of the Asylum between 1857 and 1900.

We are grateful to The Benevolent Society for permission to prepare this index and to the staff of the Mitchell Library for their co-operation with our project.

We also thank the State Library of NSW for permission to reproduce the image 'Benevolent Asylum' (Government Printing Office, State Library of NSW ref 1-08079) on this website.

Heather Garnsey & Martyn Killion

Next page: [Search the Index](#)

[^ Top](#)

© [Copyright](#) Heather Garnsey & Martyn Killion - Website Designed by [David Watkins](#) - Powered by [CMS Made Simple](#)



## Search the Index

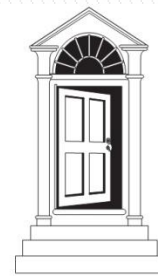
### Summary of Results

If you find a POSITIVE match on this index, make a note of the name and date of admission or discharge for the person you have found. Enter these details in the [Request Form](#) and we will then provide you with the 'notes' field from our database where available. This can provide further identifying information.

Surname	Given Name	Admission Date	Discharge Date	Age	More Details
WALKER	Henry Edward	1 May 1882		7	<a href="#">Submit Request</a>
WALKER	Henry		19 Jun 1882	7	<a href="#">Submit Request</a>
WALKER	Henry	5 Dec 1892		6m	<a href="#">Submit Request</a>
WALKER	Henry		3 Mar 1893	6m	<a href="#">Submit Request</a>
WALKER	Henry Thomas	5 Jun 1894		6	<a href="#">Submit Request</a>
WALKER	Henry		21 Jun 1894	6	<a href="#">Submit Request</a>
WALKER	Henry William	23 Nov 1897		3y 8m	<a href="#">Submit Request</a>
WALKER	Henry		11 Dec 1897	2y 4m	<a href="#">Submit Request</a>
WALKER	Edward Henry		23 Jun 1899	2w	<a href="#">Submit Request</a>
WALKER	Edward Henry	30 Jun 1899			<a href="#">Submit Request</a>
WALKER	Henry Franics	10 Jan 1900		2y 7m	<a href="#">Submit Request</a>
WALKER	Henry F		24 Jan 1900	2y 7m	<a href="#">Submit Request</a>

Showing records 1 to 12 of 12

As this example shows, the entries are all for children



## Summary of Results

If you find a POSITIVE match on this index, make a note of the name and date of admission or discharge for the person you have found. Enter these details in the [Request Form](#) and we will then provide you with the 'notes' field from our database where available. This can provide further identifying information.

Surname	Given Name	Admission Date	Discharge Date	Age	More Details
CRANE	M A	1 May 1871		31	<a href="#">Submit Request</a>
CRANE	M A		17 May 1871		<a href="#">Submit Request</a>
CRANE	Minnie	1 May 1871			<a href="#">Submit Request</a>
CRANE	Minnie		17 May 1871		<a href="#">Submit Request</a>
CRANE	Thomas	24 Aug 1858		78	<a href="#">Submit Request</a>
CRANE	Thomas		24 Aug 1858		<a href="#">Submit Request</a>
CRANE	Mary	26 Jan 1859		26	<a href="#">Submit Request</a>
CRANE	Mary		9 Mar 1859		<a href="#">Submit Request</a>
CRANE	?	27 Apr 1859		8m	<a href="#">Submit Request</a>
CRANE	M A	27 Jul 1859		26	<a href="#">Submit Request</a>
CRANE	John		26 Aug 1859	12m	<a href="#">Submit Request</a>
CRANE	Mary Ann		10 Oct 1859	26	<a href="#">Submit Request</a>
CRANE	Mary Ann	15 Apr 1862		20	<a href="#">Submit Request</a>
CRANE	Joseph	28 Apr 1862			<a href="#">Submit Request</a>
CRANE	Joseph		25 Jun 1862	2m	<a href="#">Submit Request</a>
CRANE	Mary Ann		30 Oct 1862		<a href="#">Submit Request</a>
CRANE	Mary Ann	25 May 1865		22	<a href="#">Submit Request</a>
CRANE	George William	16 Jun 1865			<a href="#">Submit Request</a>
CRANE	Mary Ann		30 Sep 1865	22	<a href="#">Submit Request</a>
CRANE	George William		30 Sep 1865	5m	<a href="#">Submit Request</a>

This example shows some adults and children



# Victoria

## Public Record Office Victoria (PROV)

- ▶ <http://www.prov.vic.gov.au>
- ▶ PROV *guide* 23 PROV's Digitised Records and Online Indexes NB some asylum PDFs are quite large but you can save them to your computer for use offline
- ▶ PROV *guide* 59 Mental Health Records
- ▶ PROV *guide* 71 Inquest Records



## Mental health

### Digitised records

[VPRS 7446/P1 Alphabetical Lists of Patients in Asylums, 1849-1885](#)  
[VPRS 7427/P1 Nominal Register of Patients, Ararat Asylum, 1867-1906](#)  
[VPRS 7426/P1 Nominal Register of Patients, Ballarat Asylum, 1893-1907](#)  
[VPRS 7428/P1 Nominal Register of Patients, Ballarat/Sunbury Asylums, 1877-1907](#)  
[VPRS 8236/P1 Register of Patients, Ballarat/Sunbury Asylums, 1877-1920](#)  
[VPRS 7395/P1 Case Books of Male Patients, Beechworth Asylum, 1867-1912](#)  
[VPRS 7396/P1 Case Books of Female Patients, Beechworth Asylum, 1878-1912](#)  
[VPRS 7493/P1 Register of Patients, Bendigo Receiving Ward, 1874-1908](#)  
[VPRS 7721/P1 Register of Patients, Collingwood Asylum, 1866-1873](#)  
[VPRS 7425/P1 Nominal Register of Patients, Kew Asylum, 1871-1906](#)  
[VPRS 7690/P1 Nominal Register of Patients, Kew Asylum, 1871-1914](#)  
[VPRS 7680/P1 Register of Patients, Kew Asylum, 1871-1919](#)  
[VPRS 7423/P1 Nominal Register of Patients, Royal Park Hospital for the Insane, 1907-1913](#)  
[VPRS 7490/P1 Asylum Records \[Case Books\], Sunnyside Licensed House, 1905-1915](#)  
[VPRS 7422/P1 Index to Male and Female Case Books, Yarra Bend Asylum, 1848-1912](#)

Records are digitised and  
freely accessible online

Ararat, Ballarat, Beechworth, Bendigo,  
Collingwood, Cremorne, Kew, Royal Park,  
Sunbury, Sunnyside, Yarra Bend











PHOTOGRAPH ON ADMISSION.

PHOTOGRAPH ON DISCHARGE.

Note first day—drowsy, eyes closed; did not sleep last night with Aspro prx. Trine tonight

25.3.07 Note at end of week—hot sleeping on floor a Sinephane a Trine. Chene 140 prx 10.00 prx. Trine last night: slept well. Looks less stuporous than on reception.

Copy of Medical Superintendent's report to Central Office. 27.3.07 Once stuporous expression: almost continually the thing on mothering into becoming

Replies to questions are also meaningless. Cries 5 reasons or pain. Typical epileptic expression. Sleeps badly (requires Chloral + Bromide). Definite history of epileptic seizures (none since reception). Very restless especially when in bed. B.H. shows no organic disease but several scars of burn on face, neck, arm, shoulder. Burns received in seizures. Little time left (could be later).

# Sarah Sophia Matheson

- ▶ Admitted to Sunbury August 1898 aged 34 yrs
- ▶ In poor circumstances
- ▶ Married with one child, 16 weeks old
  - Patient changed after birth of child – afraid of hurting it (today we might see this as post natal depression)
- ▶ Transferred to Ballarat Mental Hospital Mar 1943, not improved after 45 years.



# Beatrice Rothwell

- ▶ Admitted Sunbury 2 Sep 1915, aged 29
- ▶ Married, 3 children – youngest 2 months old
- ▶ Supposed cause – childbirth & lactation
  - Dangerous to her children – very depressed, nervous, lost weight – has impulses to kill herself and her baby (again perhaps an example of post natal depression but with a happier ending)
- ▶ Discharged 23 Oct 1915 – recovered



# Other Victorian Sources

## Alfred Hospital & Melbourne Benevolent Asylum

- ▶ Index to deaths

<http://www.tfoenander.com/alfredhospindex.htm>

- ▶ History of the Melbourne Benevolent Asylum

<http://localhistory.kingston.vic.gov.au/htm/article/302.htm>



## Index to

# Deaths at the Alfred Hospital and the Melbourne Benevolent Asylum

Terry Foenander.

A companion set of volumes was issued for deaths listed in the Melbourne ARGUS of patients who had died at the Alfred Hospital, the Melbourne Benevolent Asylum and the Immigrants' Home. These volumes contained the lists included in the ARGUS between the period 1872 and 1879. As with the *DEATHS IN THE MELBOURNE HOSPITAL* series, these lists included name of deceased, and, in most cases, age at death, nativity, immigration and death details. The complete list of names from this period are included in the two volume set *DEATHS AT THE ALFRED HOSPITAL & THE MELBOURNE BENEVOLENT ASYLUM*.

The following index from this two volume set includes name followed by the Volume and page number in which the name is listed. This index is listed for the benefit of genealogical researchers, and further details can be obtained by contacting the author.

*The complete entries for Part 1 of the Alfred Hospital listings can now be viewed by [clicking here](#).*

Aampness, Theodore 2, 1

Abraham, Henry 2, 10

Adlum, Eliza 2, 10

Agnew, George Frederick 1, 28

Ahern, Owen 1, 1

Ah Hay 1, 1

Ah Suen 1, 1

Aidoo, Ann 2, 10



# **DEATHS AT THE ALFRED HOSPITAL & THE MELBOURNE BENEVOLENT ASYLUM.**

**Part 1 - October, 1872 to December, 1877.**

## **INTRODUCTION.**

The listings included here have been compiled from data shown in the [Melbourne] ARGUS for the period October, 1872 to December, 1877. The names are, in most cases, accompanied by age at death, nativity, year and vessel of arrival in the colony of Victoria, and the date and cause of death.

The listings have been divided into two sections, the first showing the Alfred Hospital deaths, followed by the deaths at the Melbourne Benevolent Asylum. For some reason, none of the Benevolent Asylum listings included year of arrival or the vessel arrived in. The Alfred Hospital listings were first published in the ARGUS, in October, 1872, and the Melbourne Benevolent Asylum listings commenced in December, 1875.

Listings for April 1873, February 1874, February, April, May and December 1876 and May 1877 have not been located, and as such, are not included here.

Each name is cross-referenced by number to the actual date on which the details appeared in the ARGUS. The reference guide is included at the end of the list of names.

All details have been transcribed exactly as shown in the lists, including spelling errors which occur often, especially where medical terms are shown. I have included the year of death in brackets for clarity. A small number of entries only show the individual's surname, and gender can be determined, in some cases, through the details shown for that entry.

## **SECTION 1: DEATHS AT THE ALFRED HOSPITAL.**

**Owen Ahern**, labourer, aged 48, native of Ireland; arrived in 1856 by the Saldini; died September 30 [1872], of fracture of the skull. [1]

**Ah Hay**, aged 48, storeman, native of China; date of arrival unknown, vessel unknown; died June 3 [1875], of cancer of liver. [34]

**Ah Suen**, aged 37, native of China; date of arrival unknown, vessel unknown; died October 13 [1875], of erysipelas. [39]

**John Allen**, aged 46, publican, native of Sheffield; arrived in 1851, vessel unknown; died December 27 [1873], of hypertrophy with dilation of heart. [16]

## The Melbourne Benevolent Asylum Comes to Cheltenham



The beginnings of the Melbourne Benevolent Asylum were made before Victoria gained its independence from New South Wales in 1851. Councillor John Smith, of the City of Melbourne requested government officers in Sydney on June 1, 1848 to grant a site and the necessary finance to build an institution where the ill and destitute of Melbourne could be cared for. But it was not until 1850 that the foundation stone of the building to be erected in North Melbourne was laid by Superintendent La Trobe. Governor FitzRoy in Sydney granted the site together with a sum of £1000 on the understanding that an equal sum of money would be raised by public subscription. [1]

The Argus described the ten acre site in North Melbourne bound by Abbotsford, Elm, Curzon and Miller Streets as "...the most magnificent that could well be imagined, the view being not only most extensive, and beautiful in the extreme, but peculiarly eligible for a public building, from the fact of its commanding every entrance to the city, North, South, East and West, as well as forming a most prominent object of observation from the Bay. [2] Another contemporary report provides further insight into the nature of the site; "One of the problems encountered was that the Asylum was out in the bush and there was no firm thoroughfare of any kind leading to it. As it was mid winter, to save visitors from bogging or drowning, an avenue was buoyed at intervals one each side with rude torches fastened to poles secured in the ground and soldiers and every policeman that could be spared patrolled the bush track from the junction of the



# Ararat Asylum ca 1880

- ▶ State Library of Victoria image



200  
NAME

Henry Bullen

ADMITTED

28<sup>th</sup> of July August

1872

Name and address of nearest relative or friend ...

Wife Sebastopol  
Lehigh

By whom brought...

Sebastopol

Previous residence ...

579 New York

Age and sex ...

Married

Married, single, or widowed...

If any family ...

Six

Occupation ...

Late American Express Carter

Habits of life ...

England

Native place ...

Malignant Phrenitis

Form of insanity ...

Acute Dementia

Duration of present attack ...

Twelve months

If disordered before, and how long ...

If hereditary ...

Specific signs of insanity ...

Delirious

If suicidal ...

No

If dangerous ...

No

If destructive ...

Yes

Bodily Conformation:—

Head ...

Chest ...

Abdomen ...

Extremities ...

Marks of violence (if any) ...

This man was removed from the Asylum about 4 months ago by his wife at home. About three weeks ago a Medical Certificate was sent by his friends, that his delirium in the Asylum was no longer necessary, so the Certificate he was discharged. He is now in a good state of bodily health, no marked change has taken place in his mental state since he was removed at home.

November 12<sup>th</sup> There are symptoms of General Paralysis,

1873

24<sup>th</sup> 15<sup>th</sup>

Died 8 a.m.

16<sup>th</sup>

August at 3 p.m.

Post mortem examination made by Dr. Lane

Thin bones, thickened and swollen  
upper portion of the spine and into the  
vertebrae  
arteries at base of brain particularly  
enlarged  
Lungs healthy, old pleuritic  
adhesions on right side  
Heart & Liver enlarged and fatty  
Kidneys fatty  
1st rib on each side  
Cause of death—  
Disease of Heart and Brain

W. J. Gordon

Died Sept. 15/73



HENRY BULLEN Admitted 28th August 1872. p.200

Name of nearest relative or friend	Wife, Sebastopol
By whom brought	Police
Previous residence	Sebastopol
Age and sex	57 years, male
Married/single/widowed	Married
If any family	Six
Occupation	Late storekeeper, carter
Habits of life	-
Native Place	England
Form of insanity	Religious Persuasion, Dementia
Duration of present attack	Said to be fourteen days
If disordered before and how long	-
If hereditary	-
Specific signs of insanity	Delusions
If suicidal	No
If dangerous	No
If destructive	Yes

This man was removed from this Asylum about four months ago by his wife on trial, about three weeks ago a medical certificate was sent by his friends, that his detention in the Asylum was no longer necessary, on this certificate he was discharged. He is now in a feeble state of bodily health, no marked change has taken place in his mental state since he was removed on trial.

Nov. 12th There are symptoms of General Paralysis

1873 Sept. 15th. Died 8am

16th. Inquest at 3pm. P.M. examination made by Dr. Law. Membranes thickened and serum effused between them and into the ventricles. Arteries at base of brain partially ossified. Lungs healthy, old pleuritic adhesions on both sides. Heart and Liver enlarged and fatty. Kidneys fatty. Bed sores on each hip. Cause of death - disease of Heart and Brain.

p.167 HENRY BULLEN. Admitted November 7th 1871

Personal details as before except:

Habits of Life	Temperate
Form of insanity	Dementia
Duration of present attack	One year
If disordered before	No
Specific signs	Is very stupid
Destructive	No

Is in tolerably good bodily health, he is demented, memory is very bad.

Feb. 1st Bodily health not genl. so good as when admitted, no change in mental state.

March 13th 1872. In rather feeble bodily health, no change in his mental state. Was taken out on trial today by his wife.

August 21st. Discharged, released on medical certificate.



# CORONER'S INQUEST.

[No. 60.]

COLONY OF VICTORIA,

TO WIT.

Christian and  
Sovereign in  
fact.

This Deponent John Locke Gibboun

on his oath saith, I am a legally qualified Medical Practitioner  
residing at Ararat and Resident Medical

Officer of the Ararat Lunatic Asylum.

The deceased Henry Bullen had for the last  
year been in feeble health, suffering from  
General Paralysis of the Insane, and subject  
from time to time to attacks of severe  
apoplexy. For the last three months he  
had been confined entirely to his bed in  
the Hospital, where he gradually became  
more feeble and died quietly on the morning  
of September 15<sup>th</sup>. He had a bed sore  
on each hip for the last few days.  
His age as given in his papers  
is 58 years

J. L. Gibboun

Taken and Sworn before me, the 16<sup>th</sup> day  
of September 1888, at Ararat  
J. C. Campbell Coroner.



# Ballarat Asylum ca 1861

- ▶ State Library of Victoria image



# Tasmania

- ▶ Archives Office of Tasmania (AOT)
- ▶ <http://www.archives.tas.gov.au>
- ▶ Hospital Records – some inc Royal Hobart and Royal Derwent hospitals (75 years closed access)
- ▶ Inquest Records – index online 1828–1930





<b>Series Number:</b>	HSD247		
<b>Title:</b>	PATIENT RECORDS - ADMISSION REGISTER.		
<b>Start Date:</b>	01 Jan 1830		
<b>End Date:</b>	28 Feb 1954		
<b>Contents Start Date:</b>			
<b>Contents End Date:</b>			
<b>Date Range of Holdings:</b>			
<b>Access:</b>	Open		
<b>Creating Agency:</b>	<ul style="list-style-type: none"> <li><a href="#">TA465 ROYAL DERWENT HOSPITAL</a></li> </ul>	01 Jan 1827	30 Nov 2000
<b>Description (Content/Function):</b>	No., name, age, occupation, marital status, when admitted, on whose authority, disease, possible cause, duation etc., date of discharge or death. The volume for 1954-1964 was damaged beyond repair in flooding of the basement of the Administration Building at Royal Derwent Hospital.		
<b>How to Use Series:</b>			
<b>System of Arrangement:</b>	Chronological		
<b>Information Sources:</b>			
<b>Controlled Series:</b>	<ul style="list-style-type: none"> <li><a href="#">AB365 PATIENT RECORDS - CASE BOOKS (ALL PATIENTS).</a></li> </ul>	01 Jan 1872	31 Dec 1938
<b>Subsequent Series:</b>	<ul style="list-style-type: none"> <li><a href="#">HSD248 PATIENT RECORDS - ADMISSION REGISTER.</a></li> <li><a href="#">HSD249 PATIENT RECORDS - REGISTER OF ADMISSIONS FOR TREATMENT.</a></li> <li><a href="#">HSD250 PATIENT RECORDS - REGISTER OF ADMISSIONS FOR OBSERVATIONS.</a></li> </ul>	01 Dec 1964	31 Dec 1976
		02 Dec 1964	30 Jun 1966
		03 Dec 1964	29 Jun 1966
<b>Related Series:</b>	<ul style="list-style-type: none"> <li><a href="#">HSD254 PATIENT RECORDS - REGISTER OF DEATH, TRANSFER OR DISCHARGE OF PATIENTS.</a></li> <li><a href="#">SWD36 REGISTER OF CASES ADMITTED TO THE NEW NORFOLK ASYLUM ON THE AUTHORITY OF THE COLONIAL SECRETARY.</a></li> </ul>	04 Jan 1830	11 Jul 1966
		01 Jan 1864	31 Dec 1879



# Royal Derwent Hospital Image State Library of Tasmania

Shauna Hicks  
History Enterprises Darwin 2010



# South Australia

## State Records South Australia (SRSA)

- ▶ No digitised images or indexes online
- ▶ <http://www.archives.sa.gov.au>
- ▶ Adelaide and Parkside Lunatic Asylums later Glenside Hospital
- ▶ Alphabetical lists of patients 1846–1901
- ▶ Record of Patient Deaths 1891–1909
- ▶ Correspondence, police reports



## Keyword Search&gt;&gt; Search Results

This grid displays the results of your search across Series, Records and Agencies  
for text: asylums

Click on the hyperlinked Id to see further details.

Entity	Id	Title / Description	Start Date	End Date	Agency Title
Series	<a href="#">GRG34/84</a>	Account books of fees received on behalf of patients - Lunatic Asylums Department	1857	1912	Adelaide and Parkside Lunatic Asylums, later Glenside Hospital
Series	<a href="#">GRG34/83</a>	Account books of patients' moneys - Lunatic Asylums Department	1875	1915	Adelaide and Parkside Lunatic Asylums, later Glenside Hospital
Series	<a href="#">GRG34/90</a>	Alphabetical list of patients - Lunatic Asylums Department	1846	1901	Adelaide and Parkside Lunatic Asylums, later Glenside Hospital
Series	<a href="#">GRG34/12</a>	Check department books - Lunatic Asylums Department	1871	1916	Adelaide and Parkside Lunatic Asylums, later Glenside Hospital
Series	<a href="#">GRG34/10</a>	Chronological register of correspondence from other Departments - Lunatic Asylums and Colonial Surgeon	1895	1916	Adelaide and Parkside Lunatic Asylums, later Glenside Hospital
Series	<a href="#">GRG57/14</a>	Commissions of appointment	1901	1913	Crown Solicitor's Department, predecessor and successor agencies
Series	<a href="#">GRG34/72</a>	Correspondence files ('LAO', 'MH' files) - Lunatic Asylums Office and successors	1897	1922	Adelaide and Parkside Lunatic Asylums, later Glenside Hospital
Series	<a href="#">GRG34/86</a>	Discharges on trial - Lunatic Asylums Department	1898	1909	Adelaide and Parkside Lunatic Asylums, later Glenside Hospital
Series	<a href="#">GRG34/11</a>	Imprest record books - Lunatic Asylums Department	1881	1910	Adelaide and Parkside Lunatic Asylums, later Glenside Hospital
Series	<a href="#">GRG34/114</a>	Index to letters received - Lunatic Asylums Office and successors	1897	c 1918	Adelaide and Parkside Lunatic Asylums, later Glenside Hospital
Series	<a href="#">GRG34/141</a>	Index to register of patients - Lunatic Asylums Department, later Parkside Mental Hospital, later Glenside Hospital	c 1850	c 1980	Adelaide and Parkside Lunatic Asylums, later Glenside Hospital
Series	<a href="#">GRG34/15</a>	Letters and circulars received from the Chief Secretary - Resident Medical Officer, Adelaide Lunatic Asylum	1862	1875	Adelaide and Parkside Lunatic Asylums, later Glenside Hospital

First 12

Prev 12

Next 12

Last 12

Total Records Found: 25

You are viewing 1 to 12





State Library of  
South Australia  
[www.slsa.sa.gov.au](http://www.slsa.sa.gov.au)

Don't forget  
to also  
check what  
is available  
in your local  
State  
Library



B 1903

No publication of this image in any form without permission: contact the State Library of South Australia.

Glenside

Parkside Lunatic Asylum, built in 1870. Patients were transferred here from the Adelaide Lunatic Asylum, in North Terrace, as it was becoming overcrowded. In 1913 it was renamed the Parkside Mental Hospital and in 1967 was changed again to Glenside Hospital.

ca.1872





# SA Other institutions

- ▶ SRSA card index to Destitute Asylum Admissions 1870–73; 1881–1924 (some of the information can be accessed using the Name Search option in *ArchivesSearch*)
- ▶ SRSA card index to Royal Adelaide Hospital Admissions 1842–1904



# Western Australia

## State Records Office Western Australia (SROWA)

- ▶ <http://www.sro.wa.gov.au>
- ▶ Hospitals and Health Records
  - Fremantle Asylum est 1865 closed 1909
  - Claremont Hospital for the Mentally Insane est 1903
  - Lemnos Hospital
  - Whitby Falls
  - Heathcote Mental Hospital
  - Greenplace Hostel



Agency Description	<p>Care of the mentally ill in Western Australia began officially with the transfer of ten convicts from Fremantle Gaol to a new asylum located in Scots warehouse in Nov 1857. Fremantle Asylum was completed and occupied in July 1865.</p> <p>The Asylum was administered jointly by the Imperial and Colonial governments until 1886 when all control was transferred to the latter. Fremantle Asylum was no longer used after 1909 when all the patients were transferred to the Claremont Asylum.</p>		
Preceding Agencies	-		
Succeeding Agencies	-		
Superior Agencies	103 COLONIAL SECRETARY'S OFFICE	~ 31 Dec 1909	<a href="#">Detail</a>
Subordinate Agencies	-		
Functions exercised by this agency	3 HEALTH	1 Jul 1865 ~ 31 Dec 1909	<a href="#">Detail</a>
Record series created by this agency	1344 DAY BOOK - MALE	30 Dec 1899 ~ 31 Dec 1906	<a href="#">Detail</a>
	2216 OCCURRENCE BOOKS	~ 1 Jan 1903	<a href="#">Detail</a>
	2217 DAILY JOURNALS - MALE	-	<a href="#">Detail</a>
	2218 DAILY JOURNALS - MEDICAL	~ 31 Aug 1903	<a href="#">Detail</a>
	2219 CASE BOOKS	~ 31 Aug 1903	<a href="#">Detail</a>
	2220 ATTENDANTS' REPORT BOOKS	1 Jan 1901 ~ 31 Aug 1903	<a href="#">Detail</a>

# Northern Territory

- ▶ Northern Territory Archives Service (NTAS)
- ▶ <http://www.nt.gov.au/nreta/ntas>
- ▶ References to 'mental defectives'



## Public Trustee

F854	Correspondence files concerning <b>mental</b> defectives	1978-1979
F963	Journals	1923-1974
F964	Ledger books with indexes	1928-1957
F965	Cash Books	1940-1972
F966	Register of estates and effects	1970-1973
F1064	Estate files, annual multiple number	1963-1983
F1066	Power of Attorney or agents files, annual multiple number	1980-1980
F1068	Trust files, annual multiple number	1980-1980
F1070	Aged and infirm files, annual multiple number	1980-1980
NTRS 1498	Correspondence files, unregistered	1940-1972
NTRS 1711	Unregistered probate files	1957-1966
NTRS 2025	Intestacy files	1885-1911
NTRS 3311	Register of deceased estates property [Previously registered as F1056]	1964-1972

## Entry from NTAS List of Holdings





# Colonial (Chief) Secretary's Correspondence

- ▶ All States and Territories
- ▶ Look for entries under the name of the institution and then person's name
- ▶ May even be in alphabetical section under person's name
- ▶ This is a talk in itself and no time now, but be aware of it as a research option



# Police Records – Police Gazettes in *World Vital Records*

44

THE SOUTH AUSTRAL

Habib (alias Charlie, alias Habib Matta), by Det. Priest, at Adelaide, for larceny from Sulieman Joseph Antoni, at Broken Hill; remanded there.

Michael Fitzgerald, by M.C. Searson, for larceny from Heinrich Hertzberg, at Hamley Bridge; two months.

Jane Shields Sheehy, by F.C. McCabe, as a lunatic, at Adelaide; sent to the asylum.

Winifred Ann Stokie and Richard Ashley, from Broken Hill, by M.C. Foote, as lunatics, at Cockburn; sent to the asylum.

John Shanahan, by F.C. Maloney, as a lunatic, at Adelaide; sent to the asylum.

Frank Connors, by Dets. Kitson and Loughlin, as idle and disorderly, at Adelaide; two months.

Hedley Stutley and John Molloy, by Dets. Kitson and Loughlin and F.C. Walsh, for larceny from Walter Rowland Langford, withdrawn; and for larceny from Ellen O'Dee, at Adelaide; Stutley discharged, Molloy reformatory until the age of 18 years.

William Cooper, sen., by M.C. Giles, for incendiarism on the property of Alfred Campaign, at Port Lincoln; committed.

SA 1900

## ESCAPED LUNATIC.

ESCAPED from Goodna Asylum, between 4 and 5 a.m. on the 15th instant, a patient named Henry Dredge. Description:—44 years of age, 5 feet 10 inches high, fair complexion, brown hair, grey eyes, smart appearance; is an Englishman and a cooper; single, and a member of the Church of England; dressed in dark-tweed coat and trousers, twill and flannel shirts, blucher boots, dark-tweed or felt hat, and great coat; all except hat and great coat bearing Asylum brand.—O. 900. 28th May, 1894.

QLD 1894

## ESCAPED LUNATIC.

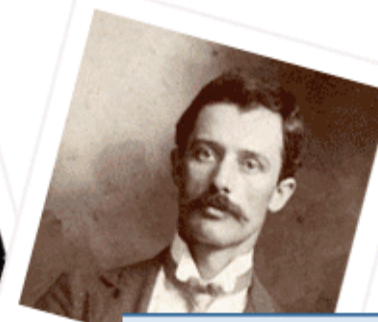
**A** RCHIBALD Moore, an insane patient, escaped from the Hospital for Insane, at New Norfolk, on the 2nd inst. Description—38 years of age, 5 feet 5 inches high, dark hair, dark grey eyes; dressed in blue jacket and vest, fustian trousers, cap ornamented. Likely to make for Glenorchy.

TAS 1879



[Search by Region](#)[Home](#)[Categories](#)[Collections](#)[Newsletter](#)[Help](#)[SEARCH](#)[Search Databases!](#)

## Who will you find?

**New 5 Day FREE Trial**[Sign Up Now!](#)

## Begin Your Search

Keyword: [Start Your Search >>](#)[Advanced Search](#)

### Today's Free ANZ Databases

- [Northern Territory Almanac Directory 1888](#)
- [Australasian Medical Directory & Handbook 1900](#)

### Major and Recent Collections

- ★ [Archive Digital Books Australasia](#)
- ★ [Queensland Family History Society](#)
- ★ [Ryerson Index](#)
- ★ [Anguline Research Archives](#)
- ★ [Eneclann](#)

[Click Here For All Major Collections](#)

### Recent Databases

- [Australian Handbook 1900](#)
- [Albany Creek Columbarium](#)

[Learn More](#) | [Search](#)[Learn More](#) | [Search](#)

# Website Resources

- ▶ Brick wall blogs

- Unlock the Past Blog

<http://www.unlockthepast.com.au/blog>

- ▶ Groups

- Genealogy Wise

<http://www.genealogywise.com/group/brickwallsweallhavethem>

- Looking4Kin

<http://looking4kin.ning.com/>

- ▶ Google

- Dan Lynch *Google Your Family Tree*





[HOME](#)[EVENTS](#)[POLLS](#)[BLOG](#)[ARTICLES](#)[RESOURCES](#)[OUR TEAM](#)[TOPICS](#)[PARTNERS](#)[CONTACT US](#)

## RECENT BLOG POSTS


Brick Wall Solutions - The Aase Gunderson Sto... - 21 Dec  
Brick Wall Solutions - John Francis Beeston - 20 Dec  
Presenting your research poll results - 17 Dec  
Queensland - 150 years on - 10 Dec  
Brick Wall Solutions - John Carnegie, John St... - 9 Dec  
Cruise poll results - 4 Dec  
Brick Wall Solutions - Finding Helen Carnegie... - 28 Nov

[more...](#)

## COMING EVENTS

19 Jan - Getting Started - Qld  
19 Jan - Discovering Archives - ACT  
6 Feb - Darwin Family History Seminar - NT  
9 Feb - VALA Conference - Vic  
16 Feb - ArchivesSearch - Qld  
17 Feb - Aircraft, Airports and Aviators - Qld  
23 Feb - Shake Your Family Tree - Aus

[more...](#)

 **SEARCH**

**SEARCH**

**NOTE: This site is currently in alpha testing. Please advise us if it is not working correctly for you - [support@unlockthepast.com.au](mailto:support@unlockthepast.com.au)**

## Brick Wall Solutions

-  **CATEGORIES**
- » [Brick Wall Solutions](#)
  - » [Events](#)
  - » [Military](#)
  - » [Polls](#)
  - » [Queensland](#)
  - » [Shauna Hicks](#)
  - » [Unlock the Past](#)
  - » [World Vital Records](#)

### BRICK WALL SOLUTIONS - THE AASE GUNDERSON STORY

Posted 21 Dec 2009

Regular readers of this blog will have noted that yesterday (21 Dec 2009) there was a Brick Wall blog by Rosemary Kopittke, another Unlock The Past (UTP) team member. A decision was made to include Brick Wall stories from other speakers so you will be seeing a wider range of solutions in 2010. Don't forget to let us know any comments or your own stories and solutions.

[Shauna Hicks's blog](#)[Add new comment](#)[Read more](#)

### BRICK WALL SOLUTIONS - JOHN FRANCIS BEESTON

Posted 20 Dec 2009



# GenealogyWise

The genealogy social network



Main My Page **Groups** Members Forum Blogs Videos Chat Photos Genealogy Search Store More

All Groups My Groups



## Brick Walls we all have them

Created by [Carmel M Reynen](#)

[View Groups](#)

Welcome to  
Genealogy Wise

[Sign Up](#)  
or [Sign In](#)

### Information



who has pulled down a brick wall and how was this done/ Who has hit a brick wall?

Members: **109**

Latest Activity: **Jan 9**

### Discussion Forum

### Members (108)



Ads by Google

[British Family Search](#)

Quick, Easy,  
Inexpensive way of  
Finding British  
Ancestors  
[www.BritishAncestors.com](http://www.BritishAncestors.com)

[Trace your ancestry](#)

Discover your  
ancestry, find long  
lost relatives, family  
tree search.  
[www.GeneBase.com](http://www.GeneBase.com)

# Looking 4 Kin Genealogy and Family History

Genealogy Network– Where helping hands help one another with our family history.

[Home](#) [My Profile](#) [Genealogy Chat Room](#) [Our Members](#) [The Groups](#) [Discussion Forum](#) [Blog](#) [PPV \\$\\$\\$ Sites](#)

[Looking 4 Kin Toolbar](#) [Genealogy Websites](#) [Notes](#)

## Genealogy Chat



**Please be sure you drop into  
Looking 4 Kin Genealogy Chat**

**Part of the original Looking 4  
Kin**

As a group the chatters in Looking 4 Kin Genealogy Chat have a wide range of genealogical resources, with which we may be able to offer a lookup, or a suggestion on what to try next in tracing your family tree. The helpers and chatters in our genealogy chatroom are worldwide, we have a wide range of genealogy experience.

We would love to have you join with

## Welcome

### Welcome to Looking 4 Kin Genealogy and Family History Network

(part of the original Looking 4 Kin Genealogy Links & Chat)

I believe there are great possibilities here for sharing information and communicating with family and friends.

This network and all aspects of Looking 4 Kin are **free** and will always remain that way. All we ask is that you **participate** if you join.

### Editing Or Adding To Your Profile Page:

Click on the My Home Page tab at the top of this page. Here you can change the color and layout of your page, add your photo, put more information on the names you are researching. It is your page to alter however you want as long as it is kept genealogy related. When done here head on over to the groups and start joining and posting. Also remember to stop into Looking 4 Kin Genealogy Chat.

### To Search For & Join Groups:

Click on the **Groups** tab at the top of this page. On the left you will see a search box, from here you can search for a group type or name.

Welcome to  
Looking 4 Kin Genealogy  
and Family History

**Sign Up**  
or Sign In

## About



Just M created this  
Ning Network.

[Create a Ning Network! »](#)

## Important Stuff

### Privacy & The Living

Please refrain from posting questions or sharing information such as names, addresses, telephone numbers etc of family members you believe to be



# Conclusion

- ▶ No one is ever really missing – just a matter of knowing where to look
- ▶ Brick wall blogs – clues, suggestions
  - Join a ning, post on a forum, advertise
- ▶ Research takes time
- ▶ Don't give up!

Thank you – Any Questions

